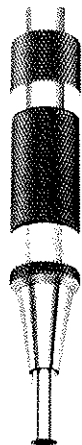


Designed for installing Vector socket pins and terminals, see tables. Most are excellent tools for installing small quantities of Vector socket pins and terminals. For larger quantities, the P158 spring impact installation tool is

recommended. Also recommended are Vector Die Points, Anvils, and Alignment blocks for insuring perpendicularity and board rigidity.

P158 Spring Impact Insertion Tool

Excellent tool for installing terminals, wrap posts, pins, and eyelets—provides consistent, adjustable insertion pressure. Spring activated tool features interchangeable die points and can be adapted to arbor or drill press. Dies, anvils and alignment blocks available separately.



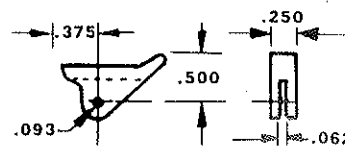
Wrapping Tools

Part No.	Description	Replacement Wire
P160-1B	Manual unwrap tool, bit included	
P160-2B	Manual wrap tool, bit included	
P160-9A	Combination manual wrap/unwrap tool, bits included	
P180-1	Manual Slit-N-Wrap tool with #28 ga. wire Poly-Nylon	W28-2 series
P184-1	Manual Slit-N-Wrap tool with #28 ga. Tefzel wire	
P184-6	Manual Slit-N-Wrap tool with #30 ga. Tefzel wire	W30-6 series

Anvils & Dies

Terminal Reference	Description	Req'd Hole Dia.	Bd. Thk.	Die Part No.	Anvil Part No.	Die/Anvil Intended For:
K24, K41	Inbord Pin	.042	1/6	D7-2	—	Insertion
K26, K30	Inbord Pin	.042	1/16 3/32	D7-2	—	Insertion
K31, K38	Inbord Pin	.042	1/16 3/32	D7-2	—	Insertion
T15, 23	Eyelet	.062	1/16	D1	—	Staking
T19	Terminal	.062	1/16	D1	A6	Staking
T44 series	Sq. Pin	.042	1/16	D11	—	Insertion
T44 series	Sq. Pin	.042	1/16	D11	—	Staking
T49 series	Sq. Pin	.042	1/16	D8	D7-3	Insertion
T49 series	Sq. Pin	.042	1/16	D7	D8	Staking
T68 series	Sq. Pin	.042	1/16	D17	D7-3	Insertion
T68 series	Sq. Pin	.042	1/16	D17	—	Staking

two versions: corner mounting and front mounting. Corner mount handles are designed for Vectorbord prototyping boards with cut corners and support up to 40 lbs. extraction force. Front mounting handles provide flat, white nylon surface—can be labeled with markers or hot stamped for identification. Mounting hardware included.

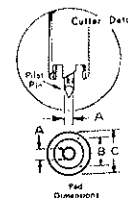


HA9

Part No.	Package
HA9/4	4
HA9/C	100
HA9/M	1000
HA14	4

P116, P138 Pad Cutters

Vector Pad Cutters provide an effective method for creating isolated solder pads around holes in copper clad boards. Pilot pin enters hole and rotates, creating a clearance area around the solder pad. Available for holes with 0.055", 0.042" and diameters. Also available without handles for use in manual or power drills.



Part No.	Shank Handle	A	B	C	Shank	Use With Vectorbord*
P116C	Yes	.055	.188	.250	.250	Pattern F, G, H .062"
P138A	Yes	.040	.086	.125	.125	Pattern P
P138C	No	.040	.086	.125	.125	.042" holes