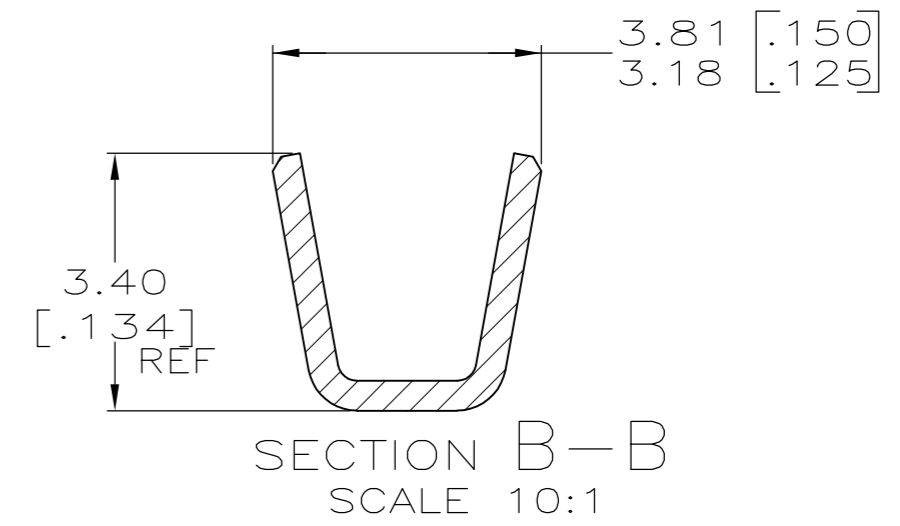
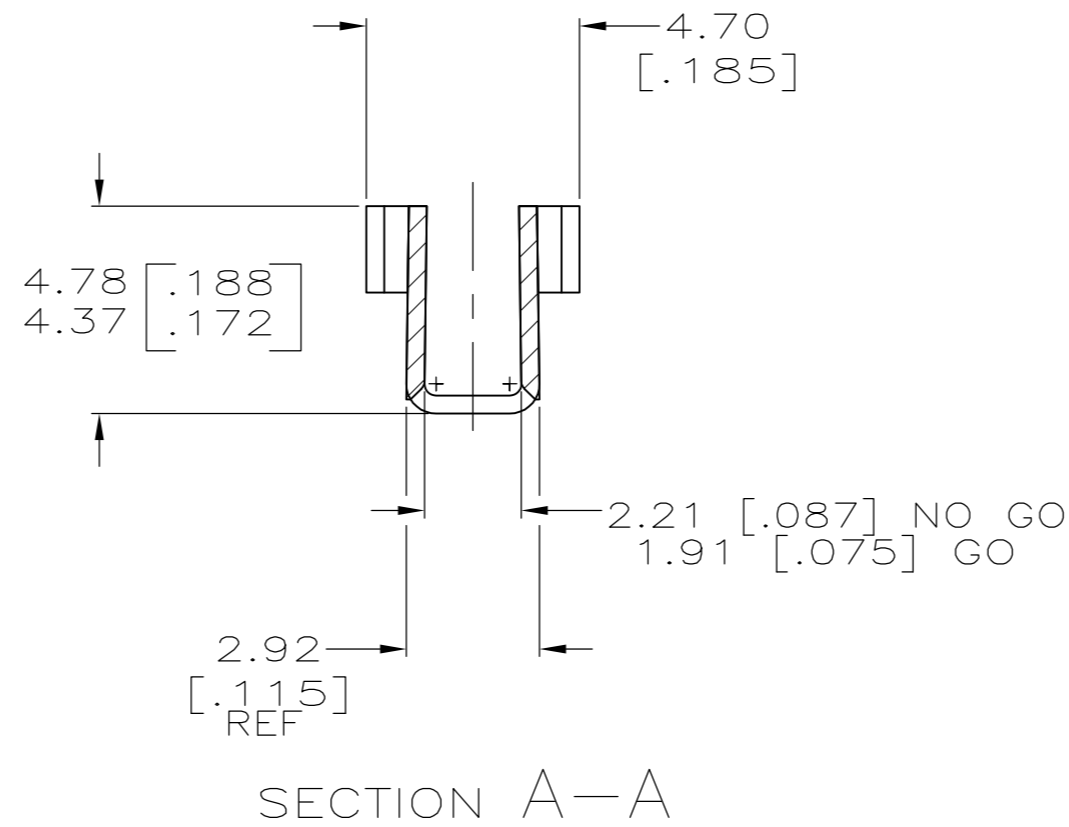
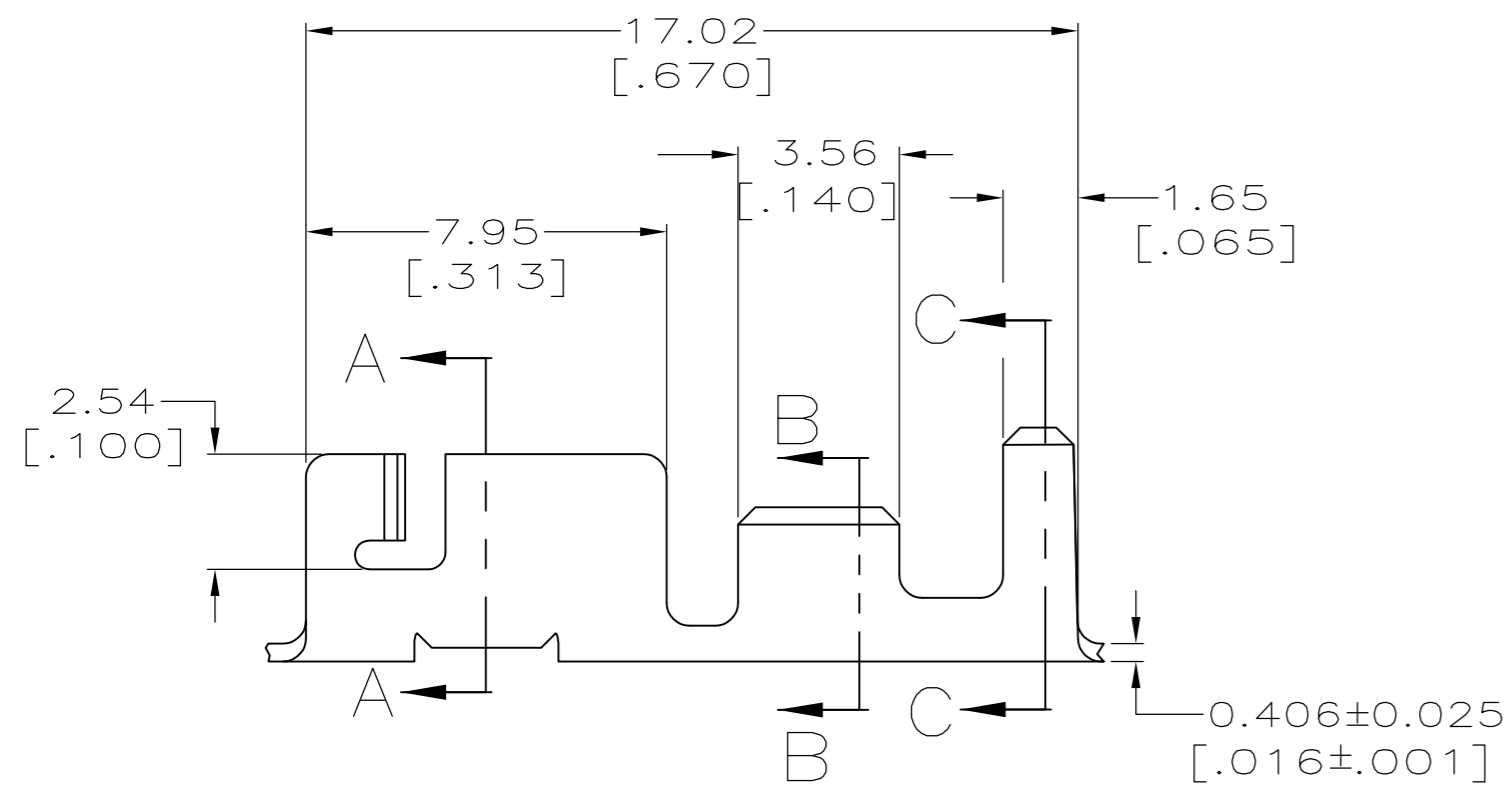
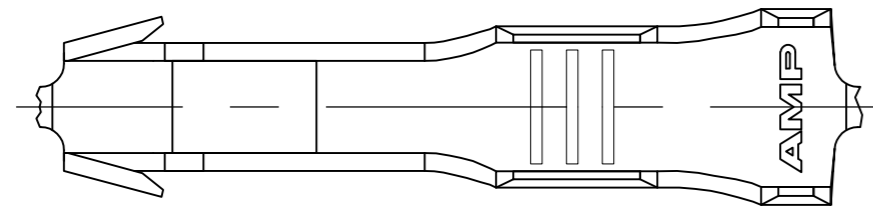


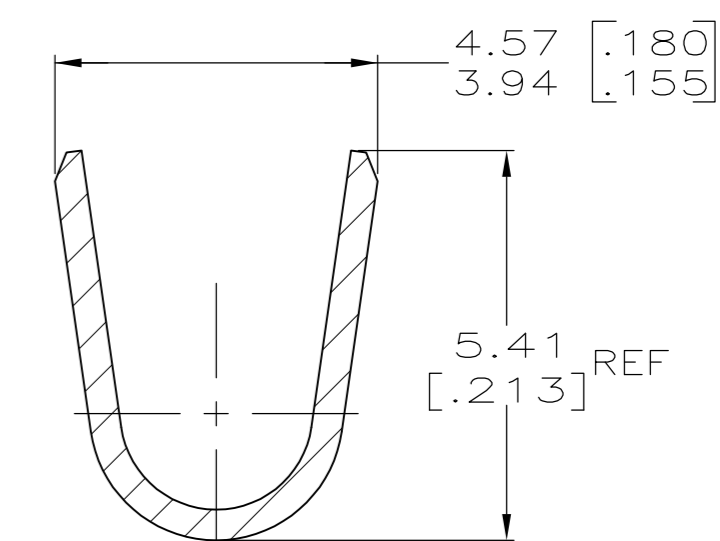
THIS DRAWING IS UNPUBLISHED. RELEASED FOR PUBLICATION  
 © COPYRIGHT - By - ALL RIGHTS RESERVED.

LOC		DIST		REVISIONS			
P	LTR	DESCRIPTION		DATE	DWN	APVD	
AF	50	E		REVISED PER ECR-12-016352	16NOV12	KH	GJ

- 1 CONTINUOUS STRIP ON REELS WITH TERMINALS LOCATED ON 18.67±0.08 [.735±.003] CENTERS.
- 2 PRODUCT SPEC DOES NOT APPLY TO PART NUMBER 1217264-2.
- △ PRELIMINARY - NOT FOR PRODUCTION.



SECTION B-B  
SCALE 10:1



SECTION C-C  
SCALE 10:1

F OR O	3.3 [.130]	4.37 [.172]	F	2.54 [.100]	1.30 [.05]	0.35 mm <sup>2</sup> [22]
					1.35 [.053]	0.5 mm <sup>2</sup> [20]
					1.45 [.057]	0.75 mm <sup>2</sup> [18]
					1.63 [.064]	1.5 mm <sup>2</sup> [16]
					1.85 [.073]	2.0 mm <sup>2</sup> [14]
TYPE	WIDTH	STRIP LENGTH ±0.38 ±.015	TYPE	WIDTH	±.051 [±.002] HEIGHT	WIRE
INSUL BARREL CRIMP		WIRE BARREL CRIMP				

H02 CU-FE, C19500	2.03-3.81 [.080-.150] DIA	#22-#14 AWG	△ 1217264-2
H03 TIN-BRASS	2.03-3.81 [.080-.150] DIA	#22-#14 AWG	1217264-1
MATERIAL	INSULATION RANGE	WIRE BARREL	PART NUMBER

THIS DRAWING IS A CONTROLLED DOCUMENT.		DWN 09NOV1999 MICHAEL S. FEHER	<b>STE</b> TE Connectivity	
		CHK 12NOV1999 PETE DESANTIS		
		APVD 12NOV1999 ALEX HUNT III	NAME	
DIMENSIONS: mm [INCHES]		TOLERANCES UNLESS OTHERWISE SPECIFIED:	RECEPTACLE, CLUSTER PIN, 2.29 [.090] DIA	
		0 PLC ± -	SIZE	
		1 PLC ± -	CAGE CODE	
		2 PLC ± 0.25[.010]	DRAWING NO	
		3 PLC ± -	RESTRICTED TO	
		4 PLC ± -	SCALE	
		ANGLES ± -	SHEET	
MATERIAL SEE TABLE		FINISH POST TIN	REV	
		WEIGHT	E	
		CUSTOMER DRAWING	SCALE 6:1 SHEET 1 OF 1	