

PART NUMBER	REV	FIRST USED	TERMINATOR	FEED TYPE	DESCRIPTION
1339797-1	A		-	BENCH & LEADMAKER	MECH POST FEED
7-1339797-1	A		-	BENCH & LEADMAKER	MECH POST FEED
7-1339797-7	A		-		SPARE PARTS KIT

CRIMP DATA AMP TERMINAL AMP CRIMP SPECS

TERMINAL NAME: FASTON CONN .375" SRS REC. CONTACT			
CRIMP	SIZE	TYPE	RANGE
WIRE	3.94 [.155 IN]	F	4.00-6.00mm ²
INSUL	5.33 [.210 IN]	F	3.80-5.10 [.150-.201 IN]
WIRE STRIP LENGTH		APPL INSTRUCTION	
SEE APPL SPEC.		408-8323	
TERMINAL APPL SPEC		FEED	
114-20108		28.40 [.118 IN]	

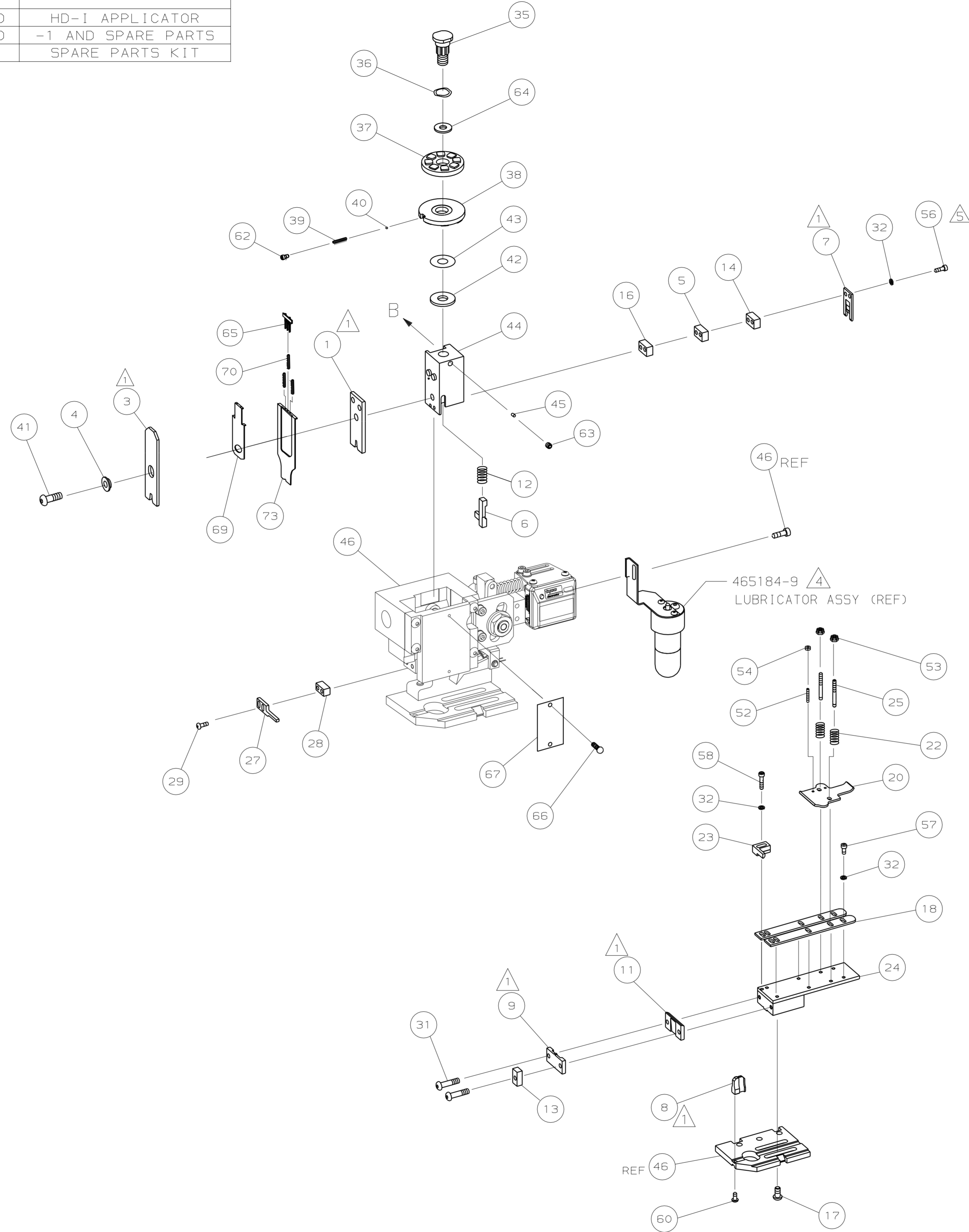
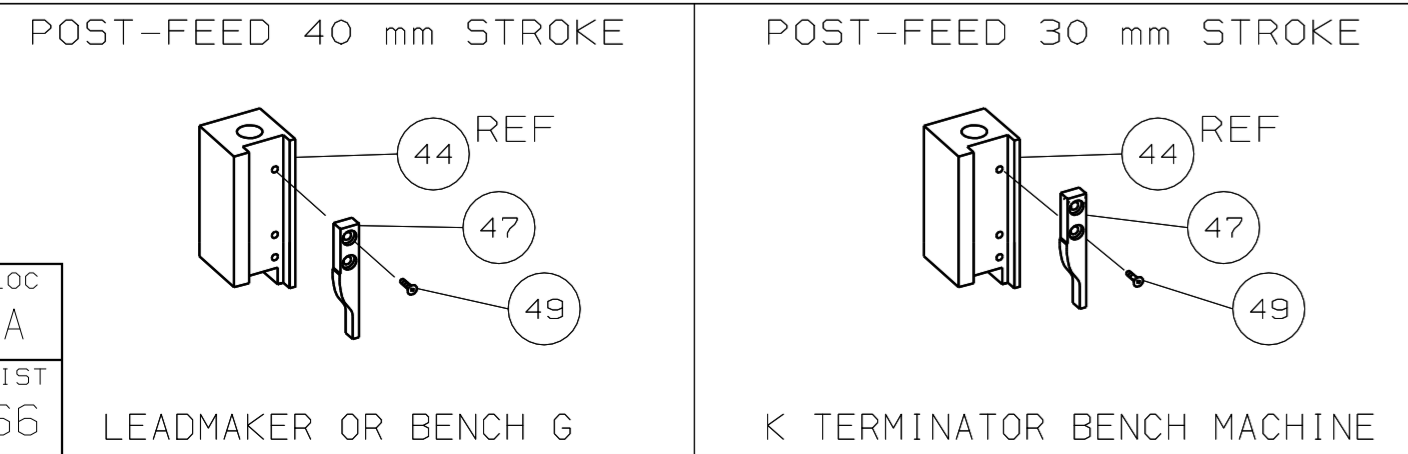
TERMINALS APPLIED

TERMINAL	WIRE SIZE	CRIMP HEIGHT	PIN PN AND LENGTH [IN]
160521	-	-	-
-	-	-	-
-	-	-	-
-	-	-	-
-	-	-	-
-	-	-	-
-	-	-	-
-	-	-	-
-	-	-	-
-	-	-	-
-	-	-	-
-	-	-	-
-	-	-	-
-	-	-	-
-	-	-	-
-	-	-	-

WIRE SIZE mm ² AWG	CRIMP HEIGHT	PIN PN AND LENGTH [IN]
6.00mm ²	3.07 ±0.03 [.121 ±.001 IN]	1-354778-7 [.2580]
5.00mm ²	2.84 ±0.03 [.112 ±.001 IN]	3-354778-7 [.2680]
4.50mm ²	2.74 ±0.03 [.108 ±.001 IN]	4-354778-7 [.2730]
4.00mm ²	2.64 ±0.03 [.104 ±.001 IN]	5-354778-6 [.2775]
-	-	-
-	-	-
-	-	-
-	-	-
-	-	-
-	-	-
-	-	-
-	-	-
-	-	-
-	-	-
-	-	-
-	-	-
-	-	-

- ▲ RECOMMENDED SPARE PARTS.
- 2. GREASE RAM, CAM, CAM FOLLOWER AND FEED ROD LIGHTLY.
- 3. LUBRICATE DAILY PER THE APPLICATOR INSTRUCTION SHEET SUPPLIED WITH THE APPLICATOR.
- ▲ CERTAIN TERMINALS REQUIRE LUBRICATION. REFER TO THE APPLICATOR INSTRUCTION SHEET FOR MORE INFORMATION.
- ▲ CUT TO LENGTH AT ASSY.

VIEW B ROTATED 180°



QTY	REQD	PER ASSY	PART NO	DESCRIPTION	ITEM NO	
-	1	1	1490525-1	DEPRESSOR, WIRE	73	
-	1	1	1339797	PRINT, APPLICATOR LOG SHEET	72	
-	1	1	1338705-2	DOCUMENTATION PACKAGE	71	
-	3	3	2-23147-2	SPRING, DEPRESSOR	70	
-	1	1	1490524-2	SPACER, DEPRESSOR	68	
-	1	1	461264-1	PLATE, IDENTIFICATION	67	
-	2	2	21017-2	SCR,DRIVE (#2X.19) ID PLATE	66	
-	1	1	1424350-1	HOLDER, PIN, WIRED	65	
-	1	1	986950-1	WASHER, FLAT PRECISION	64	
-	1	1	3-18031-0	SCR,SKT SET (M6X6) RAM	63	
-	1	1	18023-9	SCR,SKT CAP (M4X6) CP DSC	62	
-	1	1	18024-7	SCR,BHC (M4X10) ANVIL	61	
-	1	1	18024-7	SCR,BHC (M4X10) ANVIL	60	
-	2	2	1-18023-4	SCR,SHC (M4X20) HOLD DOWN	58	
-	5	5	1-18023-0	SCR,SHC (M4X8) STRIP GUIDE	57	
-	2	2	1-18023-4	SCR,SHC (M4X20) SLUG BLADE	56	
-	2	2	18029-1	NUT, HEX (M3) DRAG	55	
-	2	2	986965-1	NUT, HEX SL (M4) DRAG STUD	54	
-	2	2	2-18032-2	SCR,SKT SET (M3X10) DRAG	53	
-	1	1	18024-3	SCR,BHC (M3X10) CAM	52	
-	1	1	18024-3	SCR,BHC (M3X10) CAM	51	
-	1	1	1338676-1	CAM, POST-FEED 30 & 40 mm ST	50	
-	1	1	1338662-1	APPLICATOR, BASIC (SUBASSY)	49	
-	1	1	690191-1	PLUG, NYLON	48	
-	1	1	1320998-1	RAM	47	
-	1	1	690125-1	WASHER, LAMINATED	46	
-	1	1	1-690124-0	WASHER, RAM	45	
-	1	1	2-18024-6	SCREW,BHC (M8X25) CRIMPER	44	
-	1	1	23241-1	BALL, STEEL	43	
-	1	1	2-22278-7	SPRING, COMPRESSION	42	
-	1	1	1320922-1	DISC, INSULATION	41	
-	1	1	354777-1	WIRE DISC, PLASTIC	40	
-	1	1	22480-5	WASHER, SPRING	39	
-	1	1	690212-1	POST, RAM	38	
-	1	1	690212-1	POST, RAM	37	
-	1	1	690212-1	POST, RAM	36	
-	1	1	690212-1	POST, RAM	35	
-	1	1	690212-1	POST, RAM	34	
-	1	1	690212-1	POST, RAM	33	
-	9	9	18025-2	WASHER, LOCK (M4) SHEAR BL	32	
-	2	2	1-18024-0	SCR,BHC (M4X20) SHEAR PL	31	
-	2	2	18024-8	SCR,BHC (M4X12) STRIPPER	30	
-	1	1	3-690451-2	SPACER, STRIPPER	29	
-	1	1	240639-1	STRIPPER	28	
-	1	1	240639-1	STRIPPER	27	
-	2	2	1320906-1	DRAG, STUD	26	
-	1	1	1320995-1	PLATE, STRIP GUIDE	25	
-	1	1	240825-2	PLATE, STRIP HOLD DOWN	24	
-	2	2	4-22281-1	SPRING, DRAG	23	
-	1	1	1338665-1	DRAG, STOCK	22	
-	1	1	1338665-1	DRAG, STOCK	21	
-	2	2	1338663-8	GUIDE, LOWER STRIP	20	
-	4	4	1-18024-8	SCR,BHC (M6X12) STRIP GD PL	19	
-	1	1	1338708-1	SPACER, SLUG BLADE	18	
-	1	1	240641-4	SPACER, SLUG BLADE	17	
-	1	1	1-690481-0	SPACER, HOLD DOWN	16	
-	1	1	23846-1	SPRING, HOLD DOWN	15	
-	1	1	240644-1	PLATE, REAR SHEAR	14	
-	1	1	690495-4	PLATE, FRONT SHEAR	13	
-	1	2	1	3-1333223-3	ANVIL	12
-	1	1	2-690474-8	BLADE, SLUG	11	
-	1	1	1-455892-4	HOLD DOWN, TERMINAL	10	
-	1	1	2-240641-9	SPACER, SLUG BLADE	9	
-	1	1	238009-5	SPACER, BLOCK CRIMPER	8	
-	1	2	1	8-1424909-0	CRIMPER, INSULATION	7
-	1	2	1	456415-3	CRIMPER, WIRE	6
-	1	2	1	456415-3	CRIMPER, WIRE	5
-	1	2	1	456415-3	CRIMPER, WIRE	4
-	1	2	1	456415-3	CRIMPER, WIRE	3
-	1	2	1	456415-3	CRIMPER, WIRE	2
-	1	2	1	456415-3	CRIMPER, WIRE	1

DIMENSIONS: mm [INCHES]		MATL	HT	TR	FIN
DO NOT SCALE PRINT.					
TOLERANCES UNLESS OTHERWISE SPECIFIED:					
1	PLC DEC ±				
2	PLC DEC ±				
3	PLC DEC ±				
ANGLES ±					
SURF TEXTURE:					
REMOVE BURRS, BREAK SHARP EDGES RO.38 MAX					
DR M. CLIFFORD			APP M. CLIFFORD		
CHK -			REL 18-11-05 M. CLIFFORD		
NAME			MACHINE REF		
END FEED HD-I APPLICATOR			HD-I APPL		
SCALE			SHEET		
NO			REV		
1339797			1 OF 1		
CUSTOMER AND ASSEMBLY DRAWING			RESTRICTED TO		

THIS DRAWING IS A CONTROLLED DOCUMENT.

LAYOUT L1339797 SET UP GAGE 458638-3

RELEASER FOR PUBLICATION BY AMP INCORPORATED. ALL RIGHTS RESERVED. THIS DRAWING IS UNRELEASABLE. COPYRIGHT 20