

LTC7820EUF High Efficiency, Charge Pump DC/DC Converter

DESCRIPTION

Demonstration circuit 2543B is a high efficiency, high density, open loop charge pump (inductorless) DC/DC converter. This demo board is a voltage divider which achieves a 2:1 step-down ratio from an input voltage from 36V to 60V. The output voltage is a fixed ratio of half of the input voltage ($V_{IN}/2$) and can supply a 10A load current. This demo board has the option to deliver a 20A maximum load with the addition of 15 chip capacitors. See Figure 8 and Figure 10 for the details.

The DC2543B provides a very high efficiency solution of 98.7% when converting $48V_{IN}$ to $24V_{OUT}$ at 10A as shown in Figure 3. When configured for a 20A output, an efficiency of up to 98.4% is achievable for a $48V_{IN}$ to $24V_{OUT}$ at 20A as shown in Figure 8.

The demo board features the [LTC[®]7820](#), a fixed ratio high voltage high power switched capacitor/charge pump controller in a 4mm × 5mm QFN package. Please see LTC7820 data sheet for more detailed information.

The DC2543B needs to be powered on with no load current or a very small load current (less than 50mA) with the default setup. Large load current can be applied after V_O is established. The board offers a disconnect FET option which is controlled by the LTC7820 FAULT pin to disconnect the load during startup as shown in the schematic. Please refer to “Voltage Divider Prebalance Before Switching” section in the LTC7820 data sheet for more details regarding the startup of the voltage divider. The board also features some protection functions such as overcurrent and thermal shutdown to make it a reliable solution.

Design files for this circuit board are available at <http://www.analog.com/DC2543B>

All registered trademarks and trademarks are the property of their respective owners.

PERFORMANCE SUMMARY Specifications are at $T_A = 25^{\circ}\text{C}$

| PARAMETER | CONDITION | VALUE |
|-----------------------------------|---|------------|
| Input Voltage Range | | 36V to 60V |
| Output Voltage, V_{OUT} | $V_{IN} = 36$ to 60V , $I_{OUT} = 0\text{A}$ to 10A | $V_{IN}/2$ |
| Maximum Output Current, I_{OUT} | $V_{IN} = 36$ to 60V , $V_{OUT} = V_{IN}/2$ | 10A |
| Typical Efficiency | $V_{IN} = 48\text{V}$, $V_{OUT} = 24\text{V}$, $I_{OUT} = 10\text{A}$ | 98.7% |
| Peak Efficiency | $V_{IN} = 48\text{V}$, $V_{OUT} = 24\text{V}$ | 99% |
| Switching Frequency | | 200kHz |

NOTE: DC2543B demo manual includes a Schottky diode added across the output. This manual describes the demo board entitled “Demo Circuit 2543B.” The DC2543B replaces the DC2543A.

QUICK START PROCEDURE

Demonstration circuit 2543B is easy to set up to evaluate the performance of the LTC7820. Refer to Figure 1 for the proper measurement equipment setup and follow the procedure below.

1. With power off, connect the input power supply to V_{IN} (36V to 60V) and GND (input return).
2. Connect the output loads between V_{OUT} and GND (Initial load: no load). Refer to Figure 1.
3. Connect the DVMs to the input and output.
4. Check the default jumper/switch position: SW1 (RUN): OFF; JP2 (BIAS): ON.
5. Turn on the input power supply and adjust voltage to 48V.

NOTE: Make sure that the input voltage does not exceed 60V.

6. Turn on the switches: SW1: ON.
7. Check for the proper output voltages from $V_{O_SNS^+}$ to $V_{O_SNS^-}$.
8. Once the proper output voltage is established, adjust the loads within the operating range and measure the efficiency, output ripple voltage and other parameters.
9. After completing all tests, adjust the load to 0A, power off the input power supply.

Notes:

1. When measuring the output or input voltage ripple, do not use the long ground lead on the oscilloscope probe. See Figure 3 for the proper scope probe technique. Short, stiff leads need to be soldered to the (+) and (-) terminals of an output capacitor. The probe's ground ring needs to touch the (-) lead and the probe tip needs to touch the (+) lead.
2. When doing the load step test with the on-board dynamic load circuit, please make sure the load step-up pulse duty cycle does not exceed 2% and the pulse duration is less than 500 μ s so that the temperature of the MOSFETs Q9, Q23 in the dynamic load circuit stay in the safe region. Instead of using the on-board dynamic load circuit, an electric load can also be used for the load step test, which does not have the 2% maximum duty cycle limit for the load step.
3. It is recommended to set the electronic load in CR (constant resistance) mode for evaluation of the DC2543B board. Some electronic loads draw negative current in CC (constant current) mode when evaluating the output overcurrent protection feature of DC2543B, which can violate the absolute maximum voltage rating $-0.3V$ for V_{LOW} pin.

QUICK START PROCEDURE

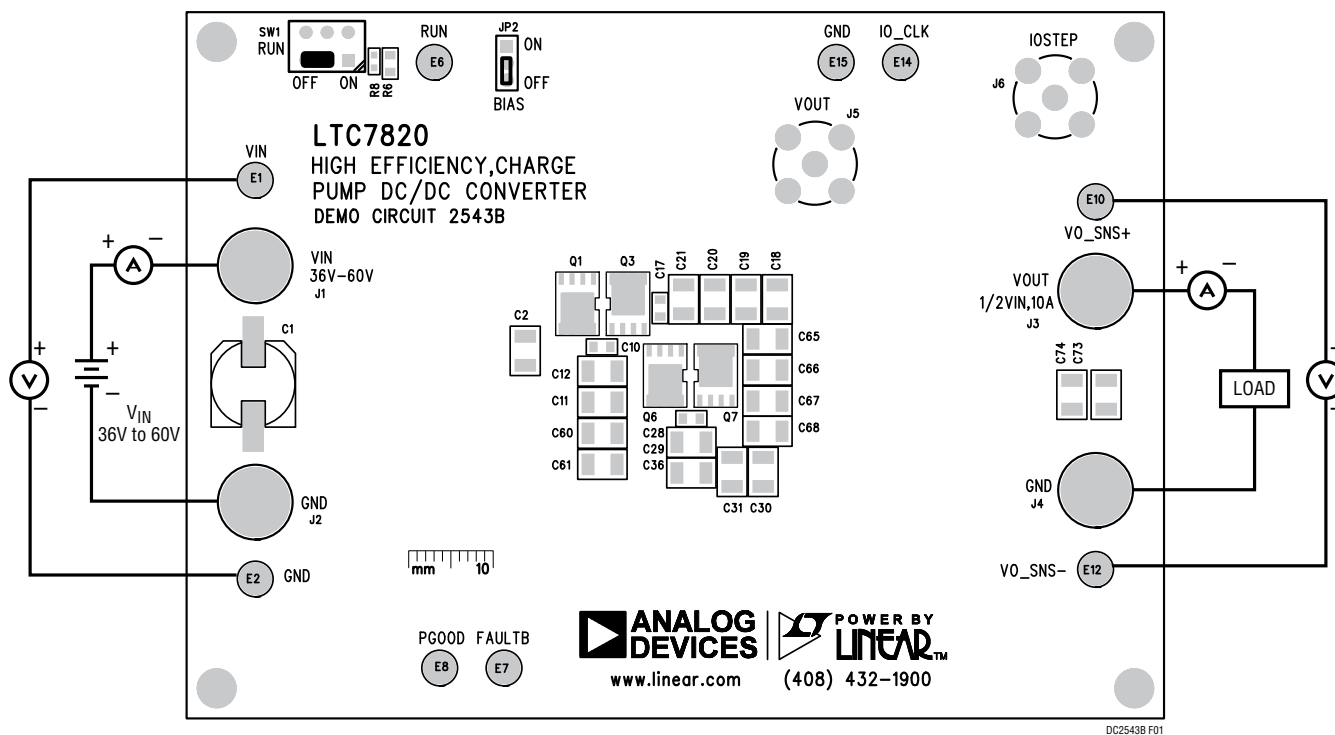


Figure 1. Proper Measurement Equipment Setup

Note: It is recommended to set the electronic load in CR (constant resistance) mode for evaluation of the DC2543B board. Some electronic loads draw negative current in CC (constant current) mode when evaluating the output overcurrent protection feature of DC2543B, which can violate the absolute maximum voltage rating $-0.3V$ for V_{LOW} pin.

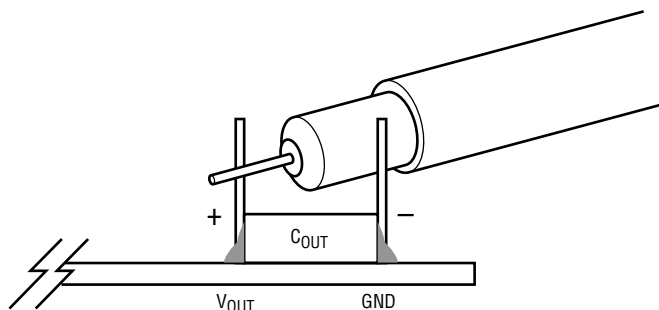


Figure 2. Measuring Output Voltage Ripple

QUICK START PROCEDURE

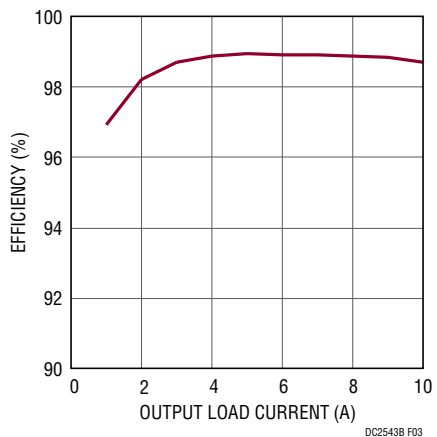


Figure 3. Efficiency vs Load Current at $V_{IN} = 48V$, $V_{OUT} = 24V$, $f_{SW} = 200kHz$

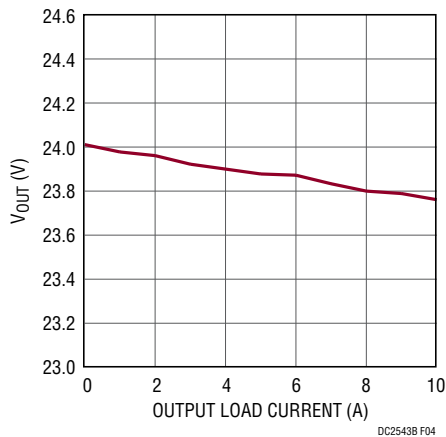


Figure 4. Load Regulation for 10A Design at $V_{IN} = 48V$, $V_{OUT} = 24V$, $f_{SW} = 200kHz$

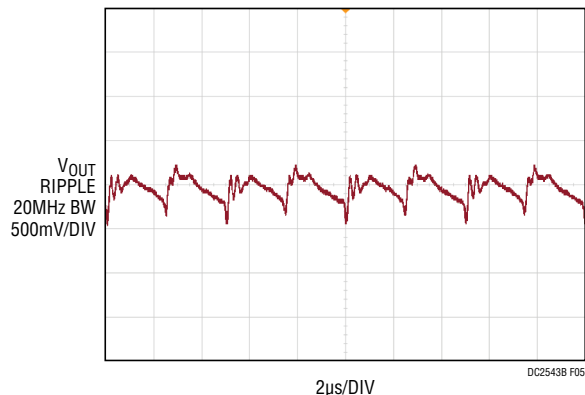


Figure 5. Output Voltage Ripple at $V_{IN} = 48V$, $V_{OUT} = 24V$, $I_{OUT} = 10A$, $f_{SW} = 200kHz$

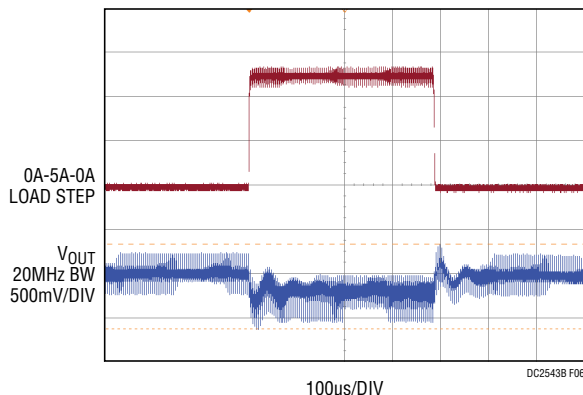


Figure 6. Load Step at $V_{IN} = 48V$, $V_{OUT} = 24V$

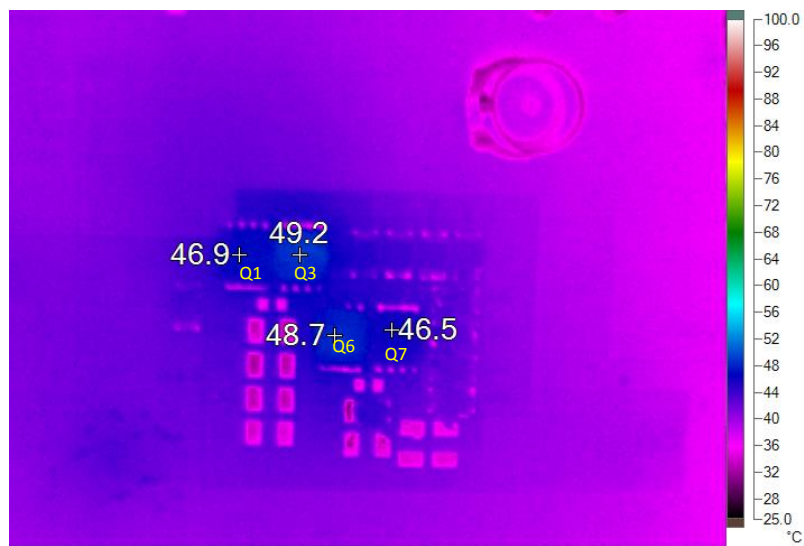


Figure 7. Thermal performance $V_{IN} = 48V$, $V_{OUT} = 24V$, $I_{OUT} = 10A$, $T_A = 23^\circ C$, No Airflow

QUICK START PROCEDURE

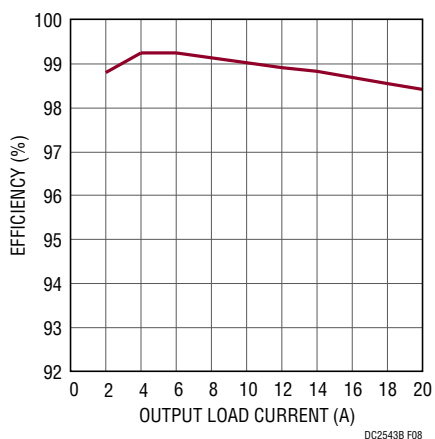


Figure 8. Efficiency vs Load Current at $V_{IN} = 48V$, $V_{OUT} = 24V$, $f_{SW} = 200kHz$ *

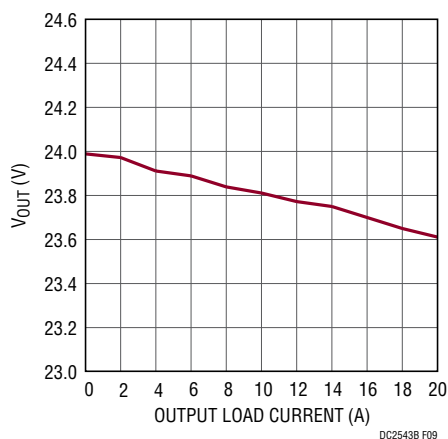


Figure 9. Load Regulation for 20A Design at $V_{IN} = 48V$, $V_{OUT} = 24V$, $f_{SW} = 200kHz$ *

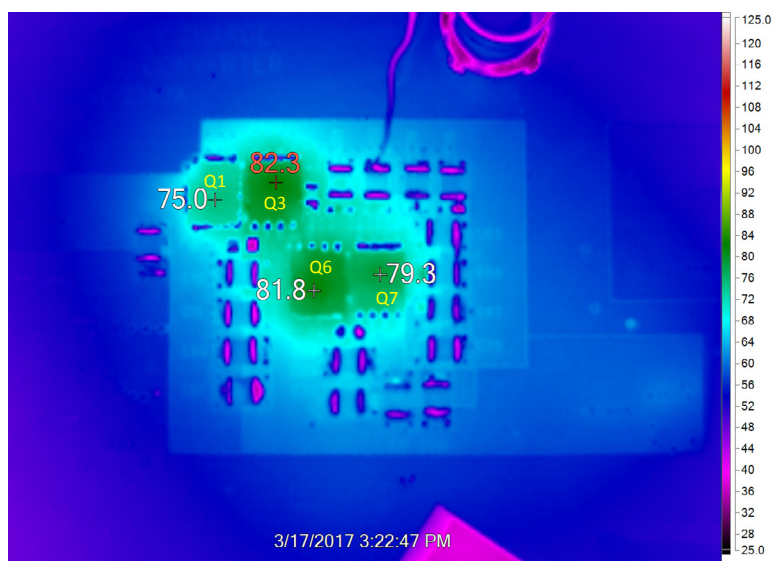


Figure 10. Thermal performance at $V_{IN} = 48V$, $V_{OUT} = 24V$, $I_{OUT} = 20A$, $T_A = 23^\circ C$, No Airflow *

* **Note:** Additional C11, C12, C60, C61, C22-C25, C69-C72, C30, C31, and C36 (10 μ F/50V, MURATA GRM32ER71H106KA12L) are populated; RS1 is changed to 2.5m Ω (WSL20102L500FEB18) for this test.

DEMO MANUAL DC2543B

PARTS LIST

| ITEM | QTY | REFERENCE | PART DESCRIPTION | MANUFACTURER/PART NUMBER |
|------------------------------------|-----|--------------------------------------|--|-----------------------------------|
| Required Circuit Components | | | | |
| 1 | 1 | C1 | CAP, 33 μ F 20% 80V ELEC | PANASONIC EEHZA1K330P |
| 2 | 8 | C2, C3, C47, C49, C56, C57, C58, C59 | CAP, 1210 2.2 μ F 10% 100V X7R | MURATA GRM32DR72A225KA12 |
| 3 | 4 | C4, C5, C15, C126 | CAP, 0603 0.1 μ F 10% 100V X7R | MURATA GRM188R72A104KA35D |
| 4 | 2 | C6, C7 | CAP, 0805 4.7 μ F 10% 16V X7R | MURATA GRM21BR71C475KA73K |
| 5 | 1 | C8 | CAP, 0603 0.22 μ F 10% 25V X7R | MURATA GRM188R71E224KA88D |
| 6 | 2 | C9, C26 | CAP, 0603 0.47 μ F 10% 25V X7R | MURATA GRM188R71E474KA12D |
| 7 | 2 | C17, C28 | CAP, 0805 2.2 μ F 10% 50V X7R | TDK C2012X7R1H225K125AC |
| 8 | 11 | C18, C19, C20, C21, C29, C66, C67 | CAP, 1210 10 μ F 10% 50V X7R | MURATA GRM32ER71H106KA12L |
| 9 | | C68, C73, C74, C65 | | |
| 10 | 2 | C27, C50 | CAP, 0603 1 μ F 10% 50V X5R | MURATA GRM188R61H105K |
| 11 | 2 | C52, C53 | CAP, 1210 22 μ F 10% 25V X5R | AVX 12103D226KAT2A |
| 12 | 1 | C54 | CAP, 0603 47nF 10% 25V X7R | AVX 06033C473KAT2A |
| 13 | 1 | C55 | CAP, 0603 470pF 10% 50V X7R | MURATA GRM188R71H471KA01D |
| 14 | 3 | D1, D2, D3 | DIODE, SCHOTTKY | CENTRAL SEMI. CMDSH-4E TR |
| 15 | 1 | D6* | DIODE, SCHOTTKY | ON SEMI, NRVTSAF5100E |
| 16 | 2 | D9, D10 | DIODE, ZENER | CENTRAL SEMI. CMHZ5236B TR |
| 17 | 1 | L2 | IND, 68 μ H | COILCRAFT, LPS6225-683MRB |
| 18 | 1 | Q1 | XSTR, N-CHANNEL MOSFET | INFINEON BSC027N06LS5 |
| 19 | 3 | Q3, Q6, Q7 | XSTR, N-CHANNEL MOSFET | INFINEON BSC032N04LS |
| 20 | 4 | Q9, Q10, Q11, Q23 | XSTR, N-CH 40V 14A TO-252 | VISHAY SUD50N04-8M8P-4GE3 |
| 21 | 1 | Q22 | TRANSISTOR., SOT-23 | FAIRCHILD., BSS123L |
| 22 | 1 | RS1 | RES., CHIP, 0.005, 1%, 2010 | VISHAY, WSL20105L000FEA |
| 23 | 1 | RS2 | RES, 2010 0 Ω JUMPER | VISHAY WSL201000000ZEA9 |
| 24 | 2 | R1, R7 | RES, 0603 1k Ω 1% | VISHAY CRCW06031K00FKEA |
| 25 | 1 | R2 | RES, 0603 2.2 Ω 5% | YAGEO RC0603JR-072R2L |
| 26 | 4 | R5, R10, R24, R32 | RES, 0603 0 Ω JUMPER | VISHAY CRCW06030000Z0EA |
| 27 | 4 | R9, R13, R17, R28 | RES, 0603 10k Ω 1% | NIC NRC06F1002TRF |
| 28 | 1 | R16 | RES, 0603 60.4k Ω 1% | VISHAY CRCW060360K4FKEA |
| 29 | 1 | R18 | RES, 0603 100k Ω 1% | VISHAY CRCW0603100KFKEA |
| 30 | 1 | R26 | RES, 0603 154k Ω 1% | YAGEO RC0603FR-07154KL |
| 31 | 1 | R27 | RES, 0603 20k Ω 5% | VISHAY CRCW060320K0JNEA |
| 32 | 1 | R29 | RES, 0603 80.6k Ω 1% | YAGEO RC0603FR-0780K6L |
| 33 | 1 | R30 | RES. 2010 1 Ω 1% 1W | IRC LRC-LR2010-01-1R00-F |
| 34 | 1 | R31 | RES, 0603 100 Ω 5% | VISHAY CRCW0603100R0JNEA |
| 35 | 1 | U1 | IC, LTC7820EUFDF, QFN 4mm \times 5mm | ANALOG DEVICES, ALTC7820EUFDF#PBF |
| 36 | 1 | U2 | IC, LTC3630AEMSE | ANALOG DEVICES, LTC3630EMSE#PBF |

PARTS LIST

Additional Demo Board Circuit Components

| | | | | |
|---|---|---|----------------|--|
| 1 | 0 | C10-C14, C16, C33, C34, C35, C36, C60-C64, C51, C77 | CAPACITOR, OPT | |
| 2 | 0 | C30-C32, C22-C25, C69-C72, C127 | | |
| 3 | 0 | Q2, Q4, Q5, Q8 OPT | MOSFET, OPT | |
| 4 | 0 | R6, R19, R2, R36, R8, R11, R12, R20, R34, R35, R60 | RESISTOR, OPT | |

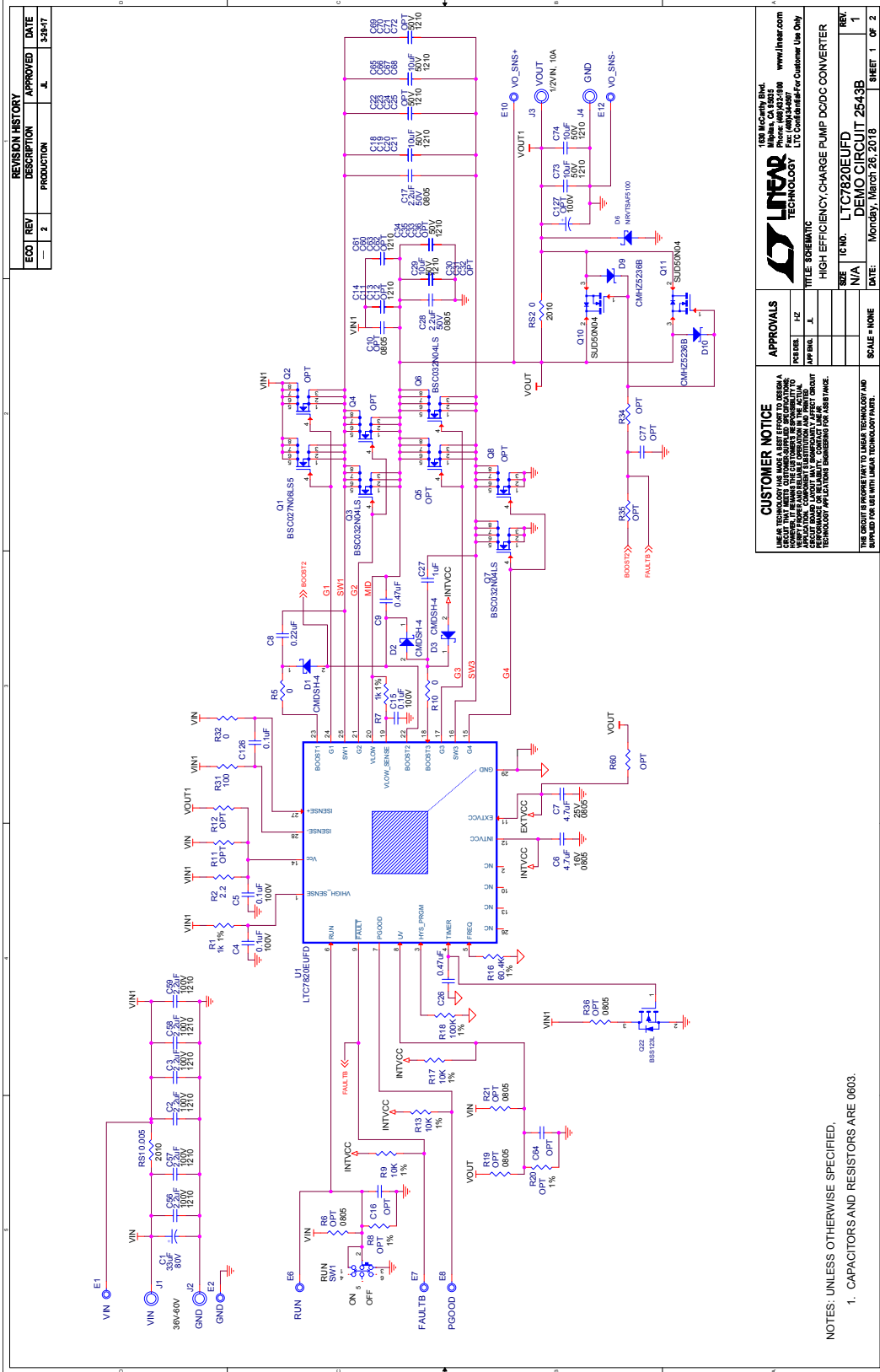
Hardware: For Demo Board Only

| | | | | |
|---|---|-----------------------------------|----------------------------|----------------------------------|
| 1 | 9 | E1, E2, E6-E8, E10, E12, E14, E15 | TURRET | MILL-MAX 2501-2-00-80-00-00-07-0 |
| 2 | 1 | JP2 | HEADER, 3 PIN 2mm | WURTH ELEKTRONIK 62000311121 |
| 3 | 4 | J1, J2, J3, J4 | JACK, BANANA | KEYSTONE, 575-4 |
| 4 | 2 | J5, J6 | CONN, BNC, 5 PINS | CONNEX, 112404 |
| 5 | 1 | SW1 | SWITCH, SUBMINIATURE SLIDE | C&K COMPONENTS, JS202011CQN |
| 6 | 1 | XJP2 | SHUNT 2mm | WURTH ELEKTRONIK 60800213421 |
| 7 | 4 | STANDOFF | STANDOFF, SNAP ON | KEYSTONE 8833 |

***Note:** D6 is for negative voltage clamping on V_{OUT} of DC2543B board in output overcurrent test with electronic load. Some electronic loads draw negative current in CC mode when evaluating the output overcurrent protection feature of DC2543B, which can violate the absolute maximum voltage rating $-0.3V$ for V_{LOW} pin without D6 populated.


DEMO MANUAL DC2543B

SCHEMATIC DIAGRAM



| ECO | REV | DESCRIPTION | APPROVED | DATE |
|-----|-----|-------------|----------|---------|
| — | 2 | PRODUCTION | JL | 3/29/17 |

| REVISION HISTORY | DESCRIPTION | DATE |
|------------------|-------------|------|
| — | — | — |

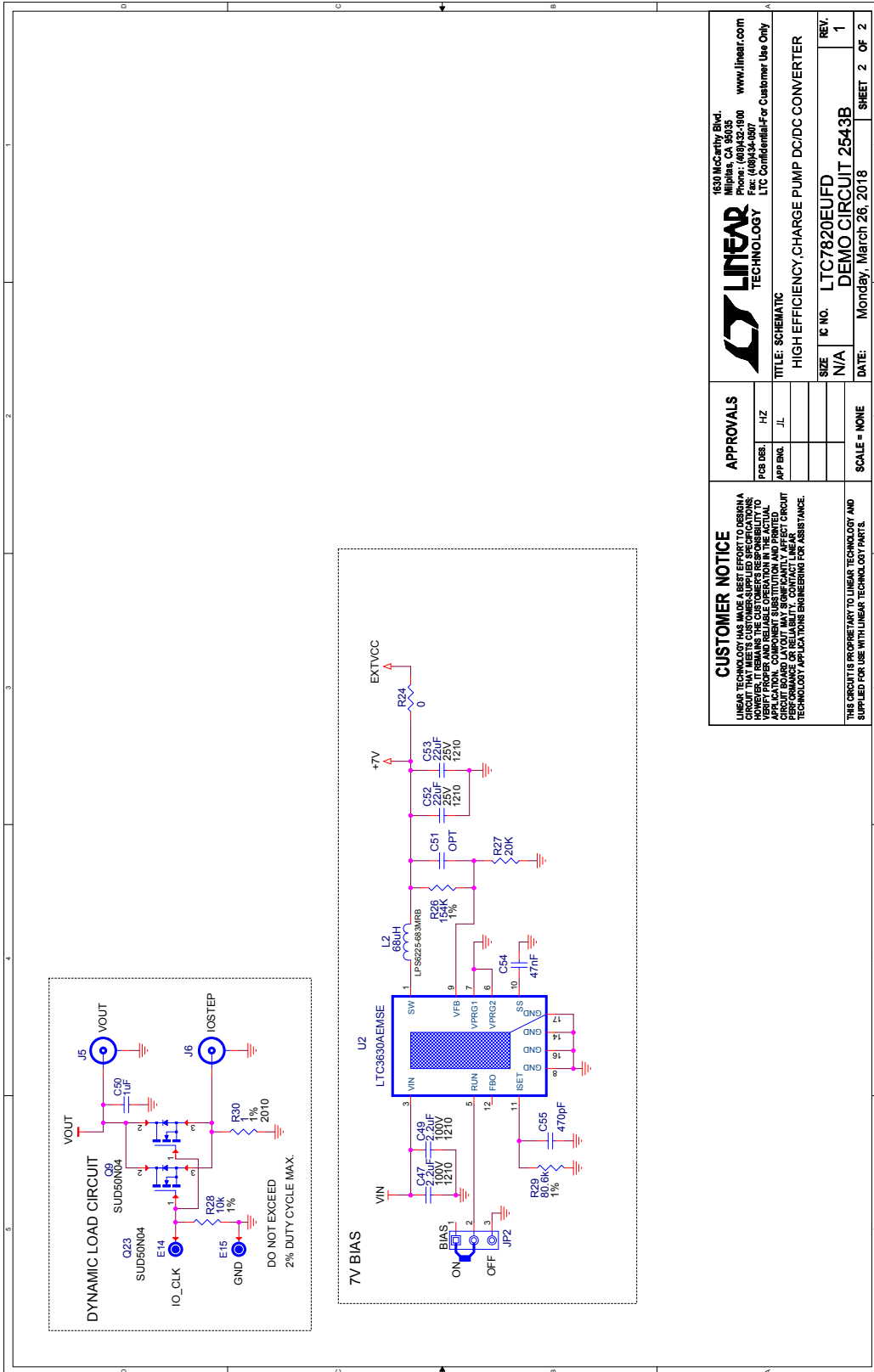

LINEAR TECHNOLOGY
 1600 McCarthy Blvd.
 Fremont, CA 94538
 Phone: (925) 462-7000
 Fax: (925) 462-7001
 www.linear.com
 LTC7820EUFD
 HIGH EFFICIENCY CHARGE PUMP DCDC CONVERTER
 TITLE: SCHEMATIC
 DATE: Monday, March 26, 2018
 SCALE: NONE
 SHEET 1 OF 2

CUSTOMER NOTICE
 LINEAR TECHNOLOGY HAS MADE A GENUINE EFFORT TO DESIGN A SCHEMATIC THAT SHOWS THE BEST PRACTICES FOR USING THE IC. HOWEVER, IT REMAINS THE CUSTOMER'S RESPONSIBILITY TO EVALUATE THE SCHEMATIC FOR THEIR APPLICATION AND TO VERIFY THE PERFORMANCE OF THE IC IN THEIR APPLICATION. CONTACT LINEAR TECHNOLOGY APPLICATION ENGINEERS FOR ASSISTANCE.

THIS SCHEMATIC IS PROVIDED AS A REFERENCE ONLY. THE SCHEMATIC AND SUPPLIED FOR USE WITH LINEAR TECHNOLOGY PARTS.

NOTES: UNLESS OTHERWISE SPECIFIED,
 1. CAPACITORS AND RESISTORS ARE 0603.

SCHEMATIC DIAGRAM



LINEAR TECHNOLOGY
1430 McCarty Blvd.
Folsom, CA 95630
Phone: (916)434-1800
Fax: (916)434-0907
www.linear.com
LTC Confidential For Customer Use Only

APPROVALS

| | |
|----------|----|
| PCB DES. | HZ |
| APP ENG. | JL |

TITLE: SCHEMATIC
HIGH EFFICIENCY CHARGE PUMP DC/DC CONVERTER

| | | | |
|--------------------|------------|-------|------------------------|
| SIZE | N/A | REV. | 1 |
| IC NO. | LTC7820EUF | DATE | Monday, March 26, 2018 |
| DEMO CIRCUIT 2543B | | SHEET | 2 OF 2 |

CUSTOMER NOTICE
LINEAR TECHNOLOGY HAS MADE A BEST EFFORT TO DESIGN A CIRCUIT THAT MEETS CUSTOMER-SUPPLIED SPECIFICATIONS AND TO PROVIDE THE MOST RELIABLE DESIGN. CUSTOMERS SHOULD VERIFY PROPER AND RELIABLE OPERATION IN THE ACTUAL APPLICATION. COMPONENT SUBSTITUTION AND PRINTED CIRCUIT BOARD MANUFACTURING VARIATIONS CAN AFFECT CIRCUIT PERFORMANCE OR RELIABILITY. CONTACT LINEAR TECHNOLOGY APPLICATIONS ENGINEERING FOR ASSISTANCE.

THIS CIRCUIT IS PROPRIETARY TO LINEAR TECHNOLOGY AND SUPPLIED FOR USE WITH LINEAR TECHNOLOGY PARTS.



ESD Caution

ESD (electrostatic discharge) sensitive device. Charged devices and circuit boards can discharge without detection. Although this product features patented or proprietary protection circuitry, damage may occur on devices subjected to high energy ESD. Therefore, proper ESD precautions should be taken to avoid performance degradation or loss of functionality.

Legal Terms and Conditions

By using the evaluation board discussed herein (together with any tools, components documentation or support materials, the "Evaluation Board"), you are agreeing to be bound by the terms and conditions set forth below ("Agreement") unless you have purchased the Evaluation Board, in which case the Analog Devices Standard Terms and Conditions of Sale shall govern. Do not use the Evaluation Board until you have read and agreed to the Agreement. Your use of the Evaluation Board shall signify your acceptance of the Agreement. This Agreement is made by and between you ("Customer") and Analog Devices, Inc. ("ADI"), with its principal place of business at One Technology Way, Norwood, MA 02062, USA. Subject to the terms and conditions of the Agreement, ADI hereby grants to Customer a free, limited, personal, temporary, non-exclusive, non-sublicensable, non-transferable license to use the Evaluation Board FOR EVALUATION PURPOSES ONLY. Customer understands and agrees that the Evaluation Board is provided for the sole and exclusive purpose referenced above, and agrees not to use the Evaluation Board for any other purpose. Furthermore, the license granted is expressly made subject to the following additional limitations: Customer shall not (i) rent, lease, display, sell, transfer, assign, sublicense, or distribute the Evaluation Board; and (ii) permit any Third Party to access the Evaluation Board. As used herein, the term "Third Party" includes any entity other than ADI, Customer, their employees, affiliates and in-house consultants. The Evaluation Board is NOT sold to Customer; all rights not expressly granted herein, including ownership of the Evaluation Board, are reserved by ADI. CONFIDENTIALITY. This Agreement and the Evaluation Board shall all be considered the confidential and proprietary information of ADI. Customer may not disclose or transfer any portion of the Evaluation Board to any other party for any reason. Upon discontinuation of use of the Evaluation Board or termination of this Agreement, Customer agrees to promptly return the Evaluation Board to ADI. ADDITIONAL RESTRICTIONS. Customer may not disassemble, decompile or reverse engineer chips on the Evaluation Board. Customer shall inform ADI of any occurred damages or any modifications or alterations it makes to the Evaluation Board, including but not limited to soldering or any other activity that affects the material content of the Evaluation Board. Modifications to the Evaluation Board must comply with applicable law, including but not limited to the RoHS Directive. TERMINATION. ADI may terminate this Agreement at any time upon giving written notice to Customer. Customer agrees to return to ADI the Evaluation Board at that time. LIMITATION OF LIABILITY. THE EVALUATION BOARD PROVIDED HEREUNDER IS PROVIDED "AS IS" AND ADI MAKES NO WARRANTIES OR REPRESENTATIONS OF ANY KIND WITH RESPECT TO IT. ADI SPECIFICALLY DISCLAIMS ANY REPRESENTATIONS, ENDORSEMENTS, GUARANTEES, OR WARRANTIES, EXPRESS OR IMPLIED, RELATED TO THE EVALUATION BOARD INCLUDING, BUT NOT LIMITED TO, THE IMPLIED WARRANTY OF MERCHANTABILITY, TITLE, FITNESS FOR A PARTICULAR PURPOSE OR NON-INFRINGEMENT OF INTELLECTUAL PROPERTY RIGHTS. IN NO EVENT WILL ADI AND ITS LICENSORS BE LIABLE FOR ANY INCIDENTAL, SPECIAL, INDIRECT, OR CONSEQUENTIAL DAMAGES RESULTING FROM CUSTOMER'S POSSESSION OR USE OF THE EVALUATION BOARD, INCLUDING BUT NOT LIMITED TO LOST PROFITS, DELAY COSTS, LABOR COSTS OR LOSS OF GOODWILL. ADI'S TOTAL LIABILITY FROM ANY AND ALL CAUSES SHALL BE LIMITED TO THE AMOUNT OF ONE HUNDRED US DOLLARS (\$100.00). EXPORT. Customer agrees that it will not directly or indirectly export the Evaluation Board to another country, and that it will comply with all applicable United States federal laws and regulations relating to exports. GOVERNING LAW. This Agreement shall be governed by and construed in accordance with the substantive laws of the Commonwealth of Massachusetts (excluding conflict of law rules). Any legal action regarding this Agreement will be heard in the state or federal courts having jurisdiction in Suffolk County, Massachusetts, and Customer hereby submits to the personal jurisdiction and venue of such courts. The United Nations Convention on Contracts for the International Sale of Goods shall not apply to this Agreement and is expressly disclaimed.