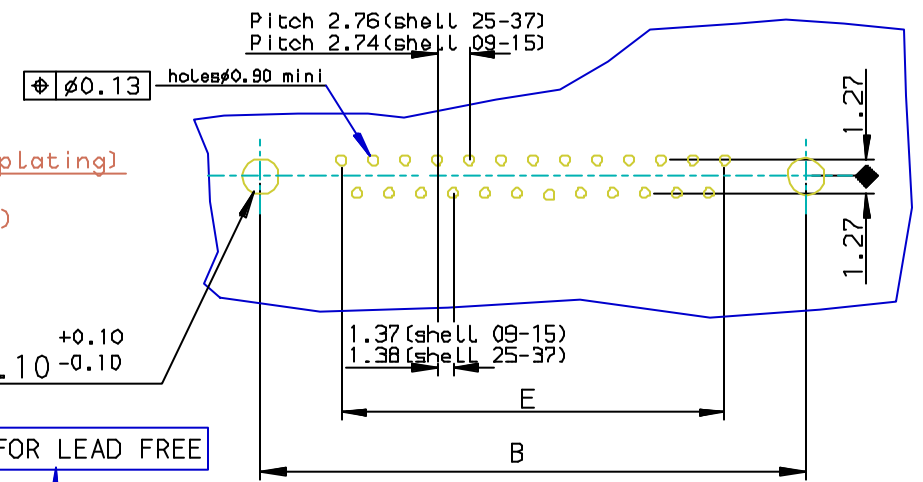


PC card drilling dimensions (after plating)  
(thickness 2.40 ± 0.20mm)



**REQUIREMENTS**

Technical characteristics:

Shell: steel tin/Zinc Cr3 plated  
 Insulators: self-extinguishing thermoplastic ,ULclass94V0  
 Contacts size 20: brass, gold on mating end, bright tin on termination end over nickel on entire contact  
 Cycles :500 mini for plating 6  
           :200 mini for plating 4

Screwlock: brass, tin/Zinc Cr3 plated  
 Metal plate for electrical continuity: brass, tin/Zinc Cr3 plated

Electrical characteristics:

max.current rating: 5A  
 Test voltage: 1000V  
 Rated voltage: 300V  
 Contact resistance: <15mΩ  
 Shell resistance: <5mΩ  
 Insulation resistance: >5000MΩ

Climatic characteristics:

Operating temperature range: -55°C +125°C

Dimensions:

in accordance with MIL-C-24308

SHELL	A±0.38	B±0.12	C±0.10	D±0.25	G±0.25	PART NUMBER
09	30.81	24.99	16.96	16.79	5.90	D09P13B*UX00**
15	39.14	33.32	25.18	25.12	5.90	D15P13B*UX00**
25	53.03	47.04	39.12	38.84	5.70	D25P13B*UX00**
37	69.32	63.50	55.68	55.30	5.70	D37P13B*UX00**

LF FOR LEAD FREE

Plating: 4 --> Flash AU  
 Plating: 6 --> 0.76µ AU

FOR ROHS DETAILS REFER DWG.NO: C01-8646-0000  
 European Views



Copyright FCI.

rev	ecn no	dr	date
D	105-0124	JS	2005/07/27
E	106-0074	SK	2006/06/08
-	-	-	-
-	-	-	-
-	-	-	-
-	-	-	-

www.fciconnect.com			surface ISO 1302 ✓	tolerance std ISO 406 ISO 1101	projection mm
TOLERANCES UNLESS OTHERWISE SPECIFIED					
Dr	JOHN SLEEBA	1994/06/30	ANGULAR	0.X	±0.1
Eng	GEORGE VJ	1994/06/30	LINEAR	0.XX	±0.1
Chr	GEORGE VJ	2005/07/27	0.XX' ±2'	0.XXX	±0.1
Appr	KVSD	2005/07/27	Product family	D-SUB	Spec ref -
FCI			title WITH SCREWLOCK & METAL PLATE. WITH SCREWLOCK & METAL PLATE.		Rev. E
catalog no			DELTA-D		dwg no C01-8646-0261
			CUSTOMER		sheet 1 of 1

REV F - 2006-04-17