

ATLANTIC VERSION TERMINATOR INTERFACE ADAPTER	PART NUMBER	REVISION	DESCRIPTION	FEED TYPE	APPLICATOR STYLE CONVERSION CHART						
					CONVERT TO	PART NUMBERS REQUIRED					
	2266534-2	A	FINE CRIMP HEIGHT ADJUST	PNEUMATIC	-	-	-	-	-	-	
	2266534-5	A	FINE CRIMP HEIGHT ADJUST	SERVO LATCH PLATE <sup>4</sup>	SERVO LATCH PLATE	2119951-1	-	8-2266534-5	1901094-3	-	2168400-6 (QUANTITY 2)
	2266534-6	A	NON-CRIMP HEIGHT ADJUST	SERVO LATCH PLATE <sup>4</sup>	PNEUMATIC FEED	2119950-1	1338683-8	5-18022-5	2119641-1	2119799-1	2063440-2
	2266534-7	A	FINE CRIMP HEIGHT ADJUST	NONE	-	-	-	-	-	-	-
	7-2266534-7	A	CRIMP TOOLING KIT	-	-	-	-	-	-	-	-

APPLICATOR DATA		
CRIMP	SIZE	TYPE
WIRE	3.56 mm [.140]	F
INSUL	4.50 mm [.177]	OV

APPLICATOR INSTRUCTIONS  
408-10389

TERMINAL DATA: LEAR TERMINAL		LEAR CRIMP SPECIFICATION	
TERMINAL NAME: CLIP 6.3MM ISO RELAIS			
WIRE STRIP LENGTH		INSULATION DIAMETER RANGE	
6.30-6.70 mm [.248-.264 IN]		Ø3.20-4.70 mm [1.26-.185 IN]	
TERMINAL APPLICATION SPECIFICATION	LEAR SPEC Rev -		
TERMINALS APPLIED <sup>1</sup>			
TE TERMINAL	LEAR TERMINAL	TE TERMINAL	LEAR TERMINAL
2113599-1	320100555	2113599-2	7703497825

WIRE SIZE	CRIMP HEIGHT mm [INCH]	CRIMP HEIGHT REFERENCE SETTING
5R3	2.70+/-0.05 [1.106+/-0.002]	4.9
4R3	2.50+/-0.05 [1.098+/-0.002]	6.0
3R3	2.40+/-0.05 [1.094+/-0.002]	6.9
1R3+2R3	2.30+/-0.05 [1.091+/-0.002]	8.3

- <sup>1</sup> RECOMMENDED SPARE PARTS
- <sup>2</sup> GREASE BEARING SURFACES LIGHTLY
- 3. LUBRICATE DAILY PER THE APPLICATOR INSTRUCTION SHEET SUPPLIED WITH THE APPLICATOR.
- <sup>4</sup> APPLICATOR SPECIFIC DATA TO BE ENTERED INTO BLANK MEMORY CHIP AT ASSEMBLY. SEE BELOW FOR PART NUMBER:  
 PNEUMATIC FEED WITH "SMART APPLICATOR" CONVERSION: 8-2266534-4  
 SERVO FEED WITH "FINE CRIMP HEIGHT ADJUST": 8-2266534-5  
 SERVO FEED WITH "NON-CRIMP HEIGHT ADJUST": 8-2266534-6
- 5. ADJUSTMENT OF THE STRIPPER MAY BE REQUIRED WHEN MOVING THE APPLICATOR BETWEEN BENCH AND LEADMAKER APPLICATIONS.
- <sup>6</sup> APPLY PART NUMBER 1-23419-5 LOCTITE TO THREADS OF ITEMS 62. APPLY PART NUMBER 2-23419-6 LOCTITE TO THREADS OF ITEM 242. FOR -6 ONLY APPLY PART NUMBER 1-23419-5 LOCTITE TO THREADS OF ITEMS 37.
- <sup>7</sup> GREASE THREADS, GROOVE AND O-RING ON ITEMS 35 & 252.
- <sup>8</sup> MAGNET, ITEM 166 MUST BE ORIENTED CORRECTLY IN ORDER TO PROPERLY ACTUATE THE COUNTER.
- <sup>9</sup> CRIMP HEIGHT REFERENCE SETTING WAS THE SETTING USED WHEN THE APPLICATOR WAS QUALIFIED AT THE FACTORY. ADJUSTMENT MAY BE NECESSARY WHEN RUNNING APPLICATOR IN THE FIELD.
- <sup>10</sup> TERMINAL PITCH NOT COMPATIBLE WITH MECHANICAL FEED.
- <sup>11</sup> TO CONVERT THE APPLICATOR TO A NON-CARRIER CUTTING STYLE, REMOVE ITEM 13 AND ATTACH TO THE LOCATION ON THE BACK SIDE OF THE HOUSING. REFER TO INSTRUCTION SHEET FOR ADDITIONAL INFORMATION.
- <sup>12</sup> WHEN ASSEMBLING A NON CRIMP HEIGHT ADJUST APPLICATOR (-6) USE SHIMS FROM ITEM 260 TO ACHIEVE A NOMINAL SHIM HEIGHT OF 3.10.

**\*WARNING**  
 ON INSTALLATION, SET WIRE DISC, ITEM 40 TO LARGEST WIRE SIZE SETTING. USE OF SETTINGS BELOW MINIMUM REQUIRED CRIMP HEIGHT SETTING WILL CAUSE DAMAGE TO CRIMP TOOLING.

-77	-7	-6	-5	-2	PART NO	DESCRIPTION	ITEM NO
-	2	2	2	2	2168083-1	SCR, SKT HD CAP, RoHS, M3 X 8.0	269

**ATLANTIC VERSION**  
 Shown on sheets 1 of 4 & 2 of 4  
 (Pacific version shown on sheets 3 of 4 & 4 of 4)

REV	DATE	BY	CHK	APP'D	DESCRIPTION	DATE	OWN	APP'D
1	21OCT2014	Y. YIN	G. BAILEY	U. GUO	DEVELOPMENT	21OCT2014	YY	UG
2	25NOV2014				REVISED	25NOV2014	YY	TE
A	07JAN2015				RELEASED	07JAN2015	YY	TE

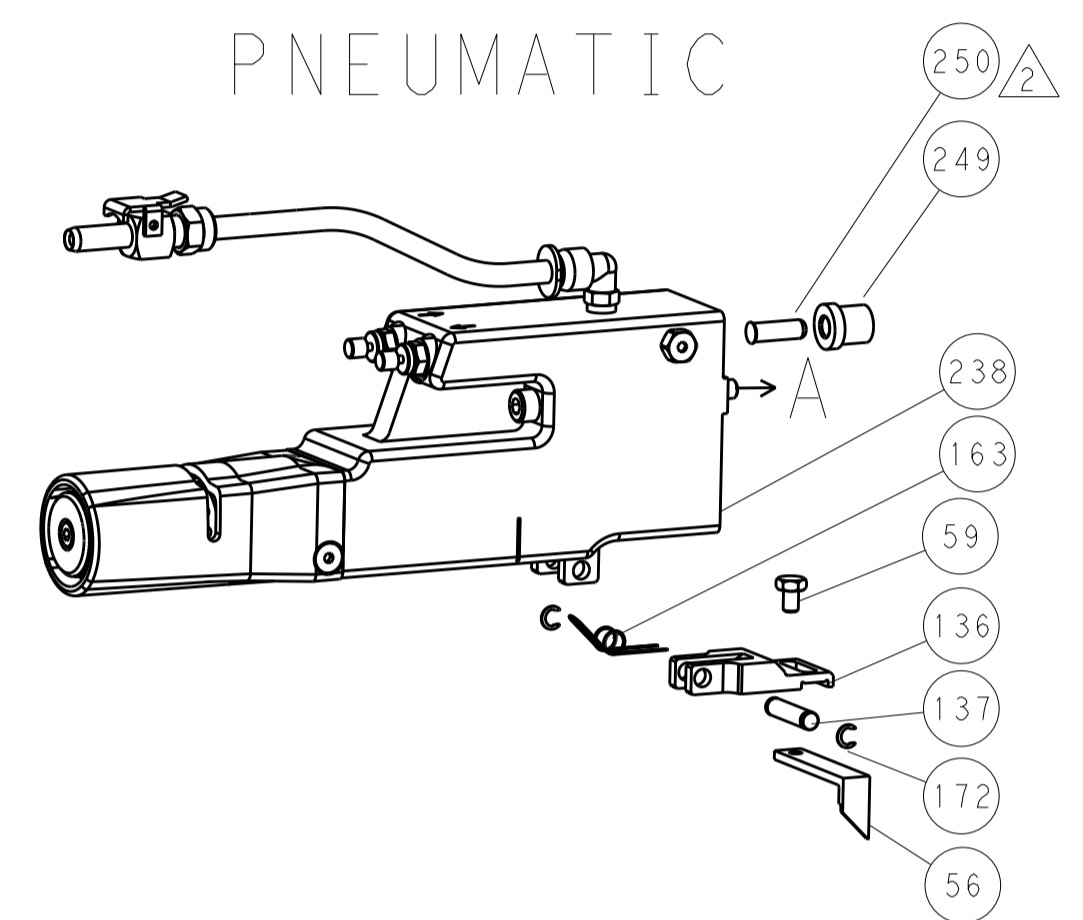
REV	DATE	BY	CHK	APP'D	DESCRIPTION	DATE	OWN	APP'D
-	1	1	1	1	1633782-2	FENCE		267
-	-	1	-	-	2119957-2	APPLICATOR SHIM PACK		260
-	1	-	1	1	8-21084-0	O-RING, .676 ID, .070 DIA. MAT.		252
-	-	-	-	1	2119640-1	PUSH ROD, AIR FEED		250
-	-	-	-	1	2079988-1	BUSHING, LCH5-12, MISUMI		249
-	-	-	-	1	2119641-1	FEED CAM, AIR FEED		248
-	1	-	1	1	2119798-1	DETENT PIN		247
-	1	-	1	1	1-22279-3	SPRING, COMPRESSION		246
-	-	1	-	-	2119758-1	RAM, AMP STYLE, SIDE FEED, NON-ADJ.		245
-	1	1	1	1	2119082-5	CAM, SNAIL, INSULATION ADJUSTMENT		244
-	1	1	1	1	2079764-1	WASHER, WAVE SPRING, CREST-TO-CREST		243
-	1	1	1	1	2119083-1	RETAINER, INSULATION DIAL		242
-	1	1	1	1	7-18023-7	SCR, SKT HD CAP M3 X 4.0		241
-	-	2	2	-	2168400-6	SHCS, LOW HEAD, RoHS, M5 X 16		240
-	-	-	-	1	2063440-2	AIR FEED MODULE		238
-	-	1	1	-	2119740-2	TAG IDENTIFICATION		213
-	-	1	1	-	1901094-3	SPACER, FEEDER		198
-	-	-	-	2	21045-3	RING, RETAIN, EXTERN, 3/16 CRESCENT		172
-	1	1	1	1	994969-1	MAGNET, RARE EARTH HIGH ENERGY		166
-	REF	REF	REF	REF	994970-2	COUNTER, MAGNETIC		164
-	-	-	-	1	240638-1	SPRING, FEED FINGER		163
-	-	-	-	1	3-23627-7	PIN, RETAIN, GRVD, 3/16 X .854		137
-	-	-	-	1	2119799-1	HOLDER, FEED FINGER, AF		136
-	-	REF	REF	-	SEE NOTE 4	MEMORY CHIP, PROGRAMMED		135
-	-	1	1	-	1633743-1	SERVO FEED LATCH ASM		133
-	-	REF	REF	-	2119944-1	FEED FINGER ASSEMBLY, SF		117
-	1	1	1	1	455888-4	SPACER, CRIMPER		82
-	1	1	1	1	2119956-1	DOCUMENTATION PACKAGE		71
-	1	-	-	1	2119740-1	TAG IDENTIFICATION		67
-	2	2	2	2	2168078-1	SCREW, DRIVE, RH, RoHS, 2 x .188		66
-	1	-	1	1	2119793-1	LIMITER, ADJUSTMENT BOLT		63
-	3	-	3	3	992763-5	SCR, SET, SOC, CONE POINT, M3 x 4.0		62
-	1	1	1	1	2079383-4	SCR, BHSC, RoHS (M4 X 8)		60
-	-	-	-	1	5-18022-5	SCR, HEX HD CAP, M4 X 6.0		59
-	-	-	-	1	1338683-8	FEED PAWL		56
-	4	4	4	4	2168400-1	SHCS, LOW HEAD, RoHS, M4 X 12		54
-	2	2	2	2	2168083-8	SCR, SKT HD CAP, RoHS, M4 X 16		53
-	1	1	1	1	5018030-1	NUT, HEX, REG, RoHS, M3		52
-	1	1	1	1	811242-5	BUMPER, HOLD DOWN		51
-	1	1	1	1	690753-2	SPACER, TONKER		50
-	-	-	-	1	18023-9	SCR, SKT HD CAP M4 X 6.0		49
-	-	-	-	-	2119653-1	FEED CAM, POST FEED		47
-	1	1	1	1	2119656-9	APPLICATOR BASIC ASSEMBLY, SF		46
-	1	-	1	1	2119370-1	RAM, AMP STYLE, SIDE FEED		44
-	1	1	1	1	2079383-7	SCR, BHSC, RoHS (M8 X 25)		41
-	1	-	1	1	2119645-1	DISC, NUMBERED FA WIRE ADJUSTMENT		40
-	1	-	1	1	2119957-1	APPLICATOR SHIM PACK		39
-	1	1	1	1	2119644-2	RAM WASHER, PRECISION		38
-	1	1	1	1	2119085-1	FA HEAD, ATLANTIC STYLE		37
-	1	-	1	1	2119092-1	BOLT, ADJUSTMENT		35
-	1	1	1	1	1752356-3	SUPPORT, TERMINAL		34
-	2	2	2	2	2079383-5	SCR, BHSC, RoHS (M4 X 20)		33
-	1	1	1	1	2161328-1	HEX HEAD, FLANGED, M5 x 8mm LONG		32
-	1	1	1	1	1320908-7	SPACER, STRIP GUIDE		30
-	1	1	1	1	2119959-1	ASSEMBLY, STRIP GUIDE		29
-	1	1	1	1	455888-3	SPACER, CRIMPER		28
-	1	1	1	1	1320928-6	STRIP GUIDE		24
-	1	1	1	1	2168083-2	SCR, SKT HD CAP, RoHS, M4 X 8.0		21
-	2	2	2	2	1-18028-2	WASHER, FLAT, REG M4		20
-	1	1	1	1	2119533-1	STRIPPER, SIDE FEED		19
-	1	1	1	1	2119806-1	INSERT, SHEAR		13
-	1	1	1	1	3-22280-3	SPRING, COMPRESSION		12
-	1	1	1	1	1-356885-4	STOP, SHEAR		11
-	1	1	1	1	2119805-1	SHEAR HOLDER, FRONT		10
-	1	1	1	1	454276-5	FLOATING SHEAR, FRONT		9
-	1	1	1	1	7-1803054-0	ANVIL, COMBINATION		8
-	1	1	1	1	2-240641-0	SPACER		7
-	-	-	-	-	-	-		6
-	1	1	1	1	2119757-8	DEPRESSOR, SHEAR		5
-	1	1	1	1	2-238011-6	BLOCK, CRIMPER SPACER		4
-	1	1	1	1	6-2119785-7	CRIMPER, INSULATION OVERLAP PREMIUM		3
-	1	1	1	1	455888-9	SPACER, CRIMPER		2
-	1	1	1	1	456411-1	CRIMPER, WIRE PREMIUM		1

DIMENSIONS:		TOLERANCES UNLESS OTHERWISE SPECIFIED:		OWN	CHK	APP'D	DATE	NAME	PRODUCT SPEC	APPLICATION SPEC	SIZE	CAGE CODE	DRAWING NO	RESTRICTED TO				
mm	0 PLC ±.05	1 PLC ±.03	2 PLC ±.013	3 PLC ±.0013	4 PLC ±.0001	ANGLES ±.01	FINISH	Y. YIN	G. BAILEY	U. GUO	19OCT2014	19OCT2014	19OCT2014	00779	2266534	1	4	REV A

LOC		DIST		REVISIONS			
A	66	P	LTM	DESCRIPTION	DATE	DWN	APVD
		-		SEE SHEET 1			

### FEED TYPE

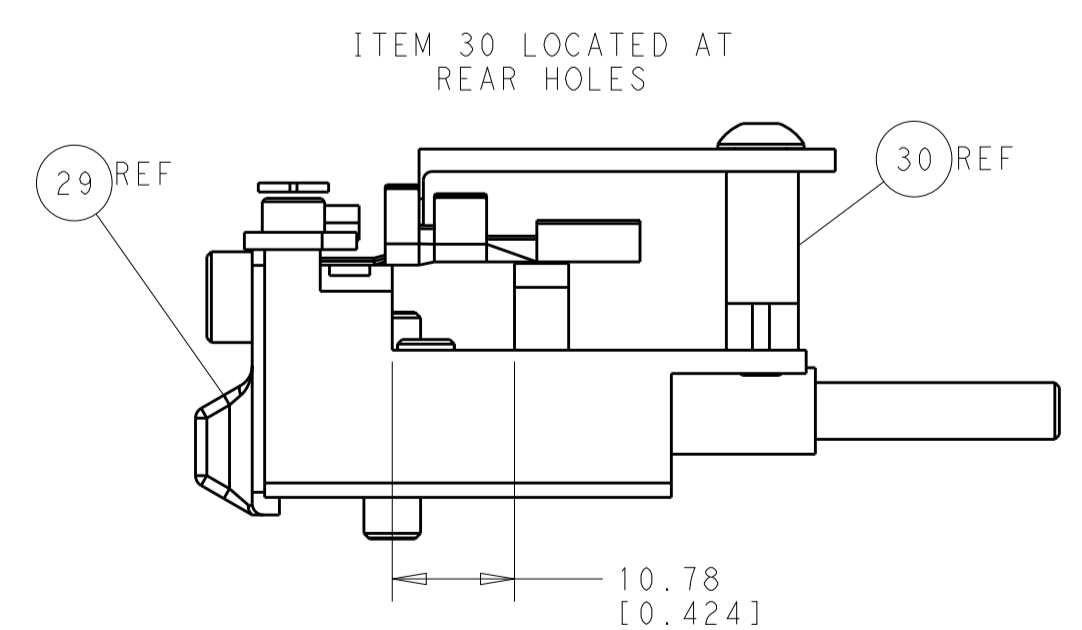
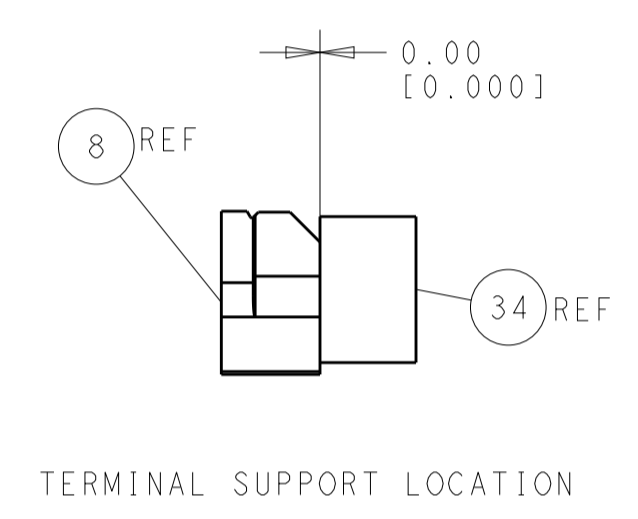
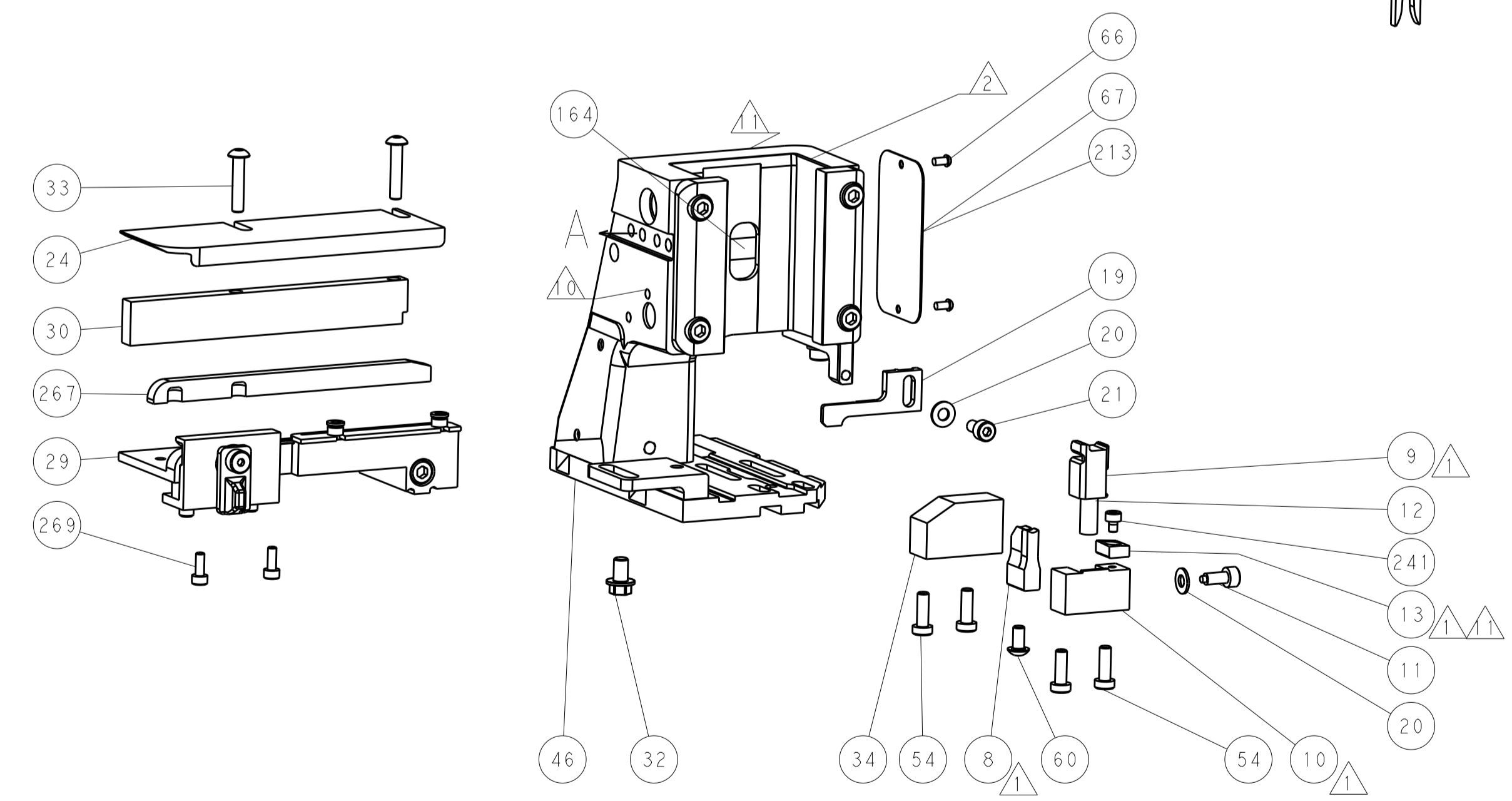
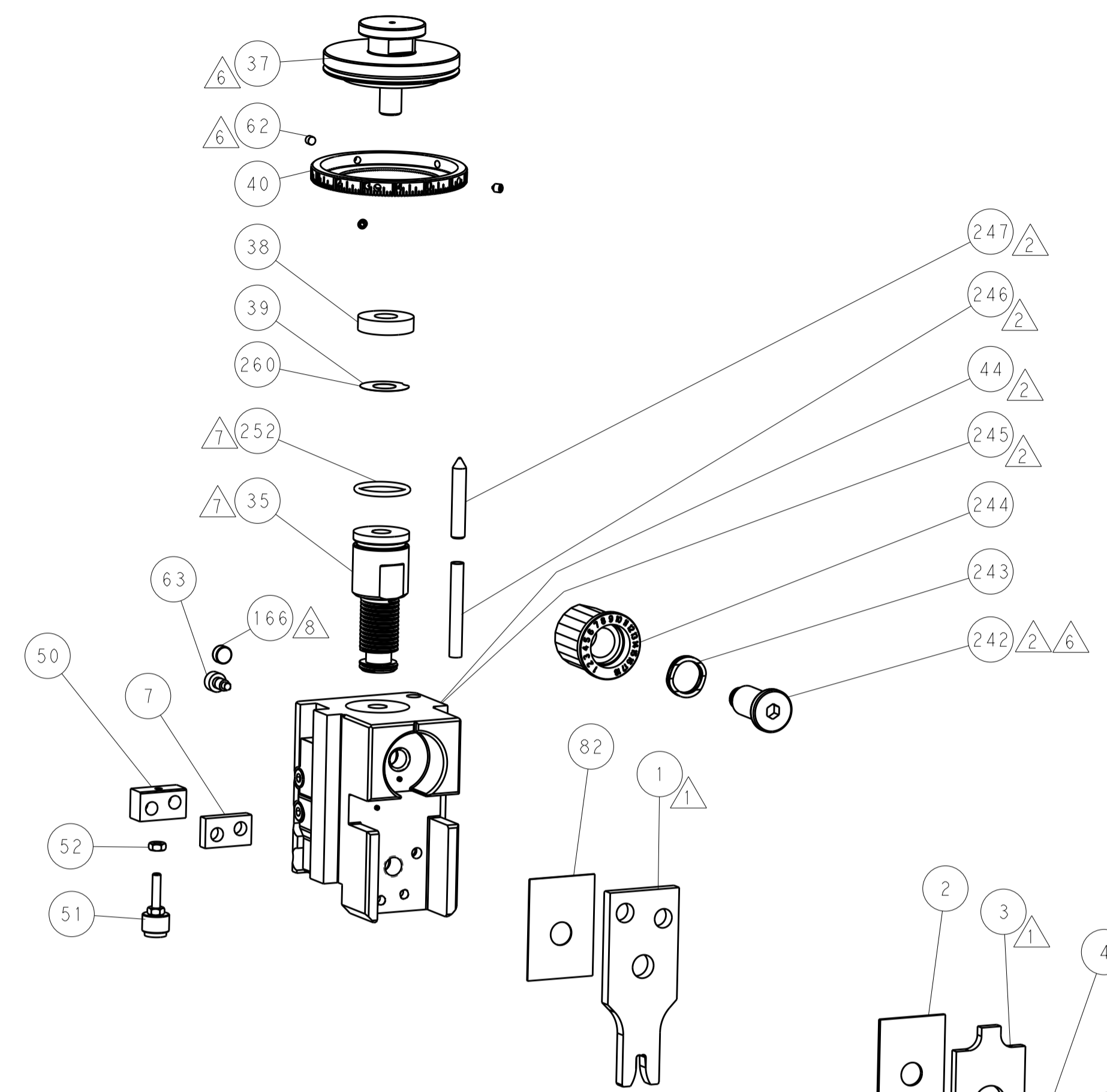
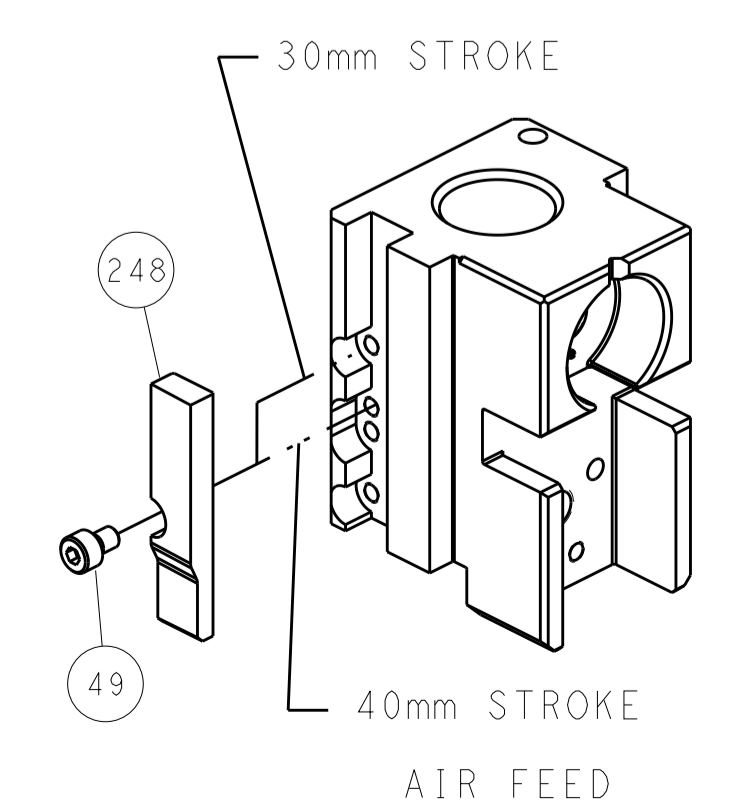
#### PNEUMATIC



#### SERVO LATCH PLATE



### CAM POSITION



**ATLANTIC VERSION**  
 Shown on sheets 1 of 4 & 2 of 4  
 (Pacific version shown on sheets 3 of 4 & 4 of 4)

DIMENSIONS:		TOLERANCES UNLESS OTHERWISE SPECIFIED:		DWN	19OCT2014	TE Connectivity Harrisburg, PA 17105-3608
mm	0 PLC ±0.5	1 PLC ±0.5	2 PLC ±0.13	CHK	19OCT2014	
	3 PLC ±0.013	4 PLC ±0.001	ANGLES ±0.0001	APVD	19OCT2014	NAME
MATERIAL	FINISH	WEIGHT	SCALE	Customer Accessible Production Drawing		RESTRICTED TO
			1:2	SHEET 2 OF 4		REV A

PACIFIC VERSION TERMINATOR INTERFACE ADAPTER	PART NUMBER	REVISION	DESCRIPTION	FEED TYPE	CONVERT TO	PART NUMBERS REQUIRED					
	2-2266534-2	A	FINE CRIMP HEIGHT ADJUST	PNEUMATIC	SERVO LATCH PLATE	2119951-1	-	8-2266534-5	1901094-3	-	2168400-6 (QUANTITY 2)
	2-2266534-5	A	FINE CRIMP HEIGHT ADJUST	SERVO LATCH PLATE <sup>4</sup>	SMART APPLICATOR	2161326-1	-	8-2266534-4	-	-	-
	2-2266534-7	A	FINE CRIMP HEIGHT ADJUST	NONE	PNEUMATIC FEED	2119950-1	1338683-8	5-18022-5	2119641-2	2119799-1	2063440-2
	7-2266534-7	A	CRIMP TOOLING KIT	-	-	-	-	-	-	-	-
	-	-	-	-	-	-	-	-	-	-	-

APPLICATOR DATA		
CRIMP	SIZE	TYPE
WIRE	3.56 mm [1.40]	F
INSUL	4.50 mm [1.77]	OV
APPLICATOR INSTRUCTIONS 408-10389		

TERMINAL DATA: LEAR TERMINAL		LEAR CRIMP SPECIFICATION	
TERMINAL NAME: CLIP 6.3MM ISO RELAIS			
WIRE STRIP LENGTH		INSULATION DIAMETER RANGE	
6.30-6.70 mm [1.248-.264 IN]		Ø3.20-4.70 mm [1.126-.185 IN]	
TERMINAL APPLICATION SPECIFICATION	LEAR SPEC Rev -	-	-
TERMINALS APPLIED <sup>10</sup>			
TE TERMINAL	LEAR TERMINAL	TE TERMINAL	LEAR TERMINAL
2113599-1	320100555	2113599-2	7703497825

WIRE SIZE	CRIMP HEIGHT mm [INCH]	CRIMP HEIGHT REFERENCE SETTING <sup>9</sup>
5R3	2.70 +/- 0.05 [1.06 +/- .002]	4.9
4R3	2.50 +/- 0.05 [1.098 +/- .002]	6.0
3R3	2.40 +/- 0.05 [1.094 +/- .002]	6.9
1R3+2R3	2.30 +/- 0.05 [1.091 +/- .002]	8.3

- <sup>1</sup> RECOMMENDED SPARE PARTS
- <sup>2</sup> GREASE BEARING SURFACES LIGHTLY
- 3. LUBRICATE DAILY PER THE APPLICATOR INSTRUCTION SHEET SUPPLIED WITH THE APPLICATOR.
- <sup>4</sup> APPLICATOR SPECIFIC DATA TO BE ENTERED INTO BLANK MEMORY CHIP AT ASSEMBLY. SEE BELOW FOR PART NUMBER:  
PNEUMATIC FEED WITH "SMART APPLICATOR" CONVERSION: 8-2266534-4  
SERVO FEED WITH "FINE CRIMP HEIGHT ADJUST": 8-2266534-5
- 5. ADJUSTMENT OF THE STRIPPER MAY BE REQUIRED WHEN MOVING THE APPLICATOR BETWEEN BENCH AND LEADMAKER APPLICATIONS.
- <sup>6</sup> APPLY PART NUMBER 1-23419-5 LOCTITE TO THREADS OF ITEMS 62.  
APPLY PART NUMBER 2-23419-6 LOCTITE TO THREADS OF ITEM 242.
- <sup>7</sup> GREASE THREADS, GROOVE AND O-RING ON ITEMS 139 & 152.
- <sup>8</sup> MAGNET MUST BE ORIENTED CORRECTLY IN ORDER TO PROPERLY ACTUATE THE COUNTER.
- <sup>9</sup> CRIMP HEIGHT REFERENCE SETTING WAS THE SETTING USED WHEN THE APPLICATOR WAS QUALIFIED AT THE FACTORY. ADJUSTMENT MAY BE NECESSARY WHEN RUNNING APPLICATOR IN THE FIELD.
- <sup>10</sup> TERMINAL PITCH NOT COMPATIBLE WITH MECHANICAL FEED.
- <sup>11</sup> TO CONVERT THE APPLICATOR TO A NON-CARRIER CUTTING STYLE, REMOVE ITEM 13 AND ATTACH TO THE LOCATION ON BACK SIDE OF THE HOUSING. REFER TO INSTRUCTION SHEET FOR ADDITIONAL INFORMATION.

\*WARNING  
ON INSTALLATION, SET WIRE DISC, ITEM 40 TO LARGEST WIRE SIZE SETTING. USE OF SETTINGS BELOW MINIMUM REQUIRED CRIMP HEIGHT SETTING WILL CAUSE DAMAGE TO CRIMP TOOLING.

PACIFIC VERSION  
Shown on sheets 3 of 4 & 4 of 4  
(Atlantic version shown on sheets 1 of 4 & 2 of 4)

SET UP GAUGE	LOC	DIST	REVISIONS			
2119599-1	A	66	REV	DATE	BY	APPD
-	-	-	SEE SHEET 1	-	-	-

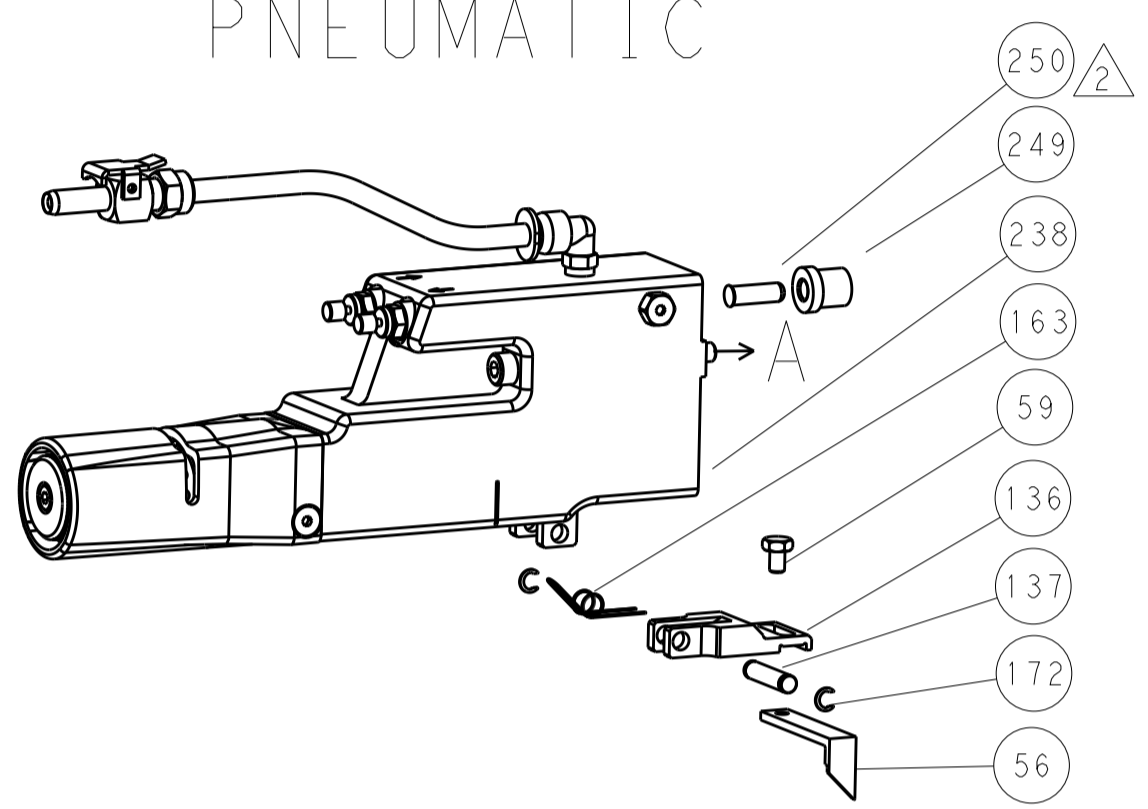
-	2	2	2	2168083-1	SCR, SKT HD CAP, RoHS, M3 X 8.0	269
-	1	1	1	1633782-2	FENCE	267
-	1	1	1	2119782-1	FINE ADJUST HEAD ASM, PACIFIC STYLE	251
-	-	-	1	2119640-1	PUSH ROD, AIR FEED	250
-	-	-	1	2079988-1	BUSHING, LCH5-12, MISUMI	249
-	1	1	1	1-22279-3	SPRING, COMPRESSION	246
-	1	1	1	2119082-5	CAM, SNAIL, INSULATION ADJUSTMENT	244
-	1	1	1	2079764-1	WASHER, WAVE SPRING, CREST-TO-CREST	243
-	1	1	1	2119083-1	RETAINER, INSULATION DIAL	242
-	1	1	1	7-18023-7	SCR, SKT HD CAP M3 X 4.0	241
-	-	2	-	2168400-6	SHCS, LOW HEAD, RoHS, M5 X 16	240
-	-	-	1	2063440-2	AIR FEED MODULE	238
-	-	1	-	2119740-2	TAG, IDENTIFICATION	213
-	-	1	-	1901094-3	SPACER, FEEDER	198
-	-	-	2	21045-3	RING, RETAIN, EXTERN, 3/16 CRESCENT	172
-	1	1	1	994969-1	MAGNET, RARE EARTH HIGH ENERGY	166
-	REF	REF	REF	994970-2	COUNTER, MAGNETIC	164
-	-	-	1	240638-1	SPRING, FEED FINGER	163
-	1	1	1	8-21084-1	O-RING, .801 ID, .070 DIA, MAT.	152
-	-	-	1	2119641-2	FEED CAM, AIR FEED	151
-	1	1	1	2119798-2	DETENT PIN	145
-	1	1	1	2079383-8	SCR, BHSC, RoHS (M4 X 16)	144
-	4	4	4	2168400-5	SHCS, LOW HEAD, RoHS, M4 X 20	143
-	1	1	1	1-2119656-0	APPLICATOR BASIC ASSEMBLY, SF	141
-	1	1	1	2119650-1	RAM, ASIAN STYLE, SIDE FEED	140
-	1	1	1	2119092-2	BOLT, ADJUSTMENT	139
-	-	-	1	3-23627-7	PIN, RETAIN, GRVD, 3/16 X .854	137
-	-	-	1	2119799-1	HOLDER, FEED FINGER, AF	136
-	-	REF	-	SEE NOTE 4	MEMORY CHIP, PROGRAMMED	135
-	-	1	-	1633743-1	SERVO FEED LATCH ASM	133
-	-	REF	-	2119944-1	FEED FINGER ASSEMBLY, SF	117
-	1	1	1	455888-4	SPACER, CRIMPER	82
-	1	1	1	2119956-1	DOCUMENTATION PACKAGE	71
-	1	-	1	2119740-1	TAG, IDENTIFICATION	67
-	2	2	2	2168078-1	SCREW, DRIVE, RH, RoHS, 2 x .188	66
-	1	1	1	2119793-1	LIMITER, ADJUSTMENT BOLT	63
-	3	3	3	992763-5	SCR, SET, SOC, CONE POINT, M3 X 4.0	62
-	-	-	1	5-18022-5	SCR, HEX HD CAP, M4 X 6.0	59
-	-	-	1	1338683-8	FEED PAWL	56
-	2	2	2	2168083-8	SCR, SKT HD CAP, RoHS, M4 X 16	53
-	1	1	1	5018030-1	NUT, HEX, REG, RoHS, M3	52
-	1	1	1	811242-5	BUMPER, HOLD DOWN	51
-	1	1	1	690753-2	SPACER, TONKER	50
-	-	-	1	18023-9	SCR, SKT HD CAP M4 X 6.0	49
-	1	1	1	2079383-7	SCR, BHSC, RoHS (M8 X 25)	41
-	1	1	1	2119645-1	DISC, NUMBERED FA WIRE ADJUSTMENT	40
-	1	1	1	2119957-1	APPLICATOR SHIM PACK	39
-	1	1	1	2119644-2	RAM WASHER, PRECISION	38
-	1	1	1	1752356-3	SUPPORT, TERMINAL	34
-	2	2	2	2079383-5	SCR, BHSC, RoHS (M4 X 20)	33
-	1	1	1	2161328-1	HEX HEAD, FLANGED, M5 x 8mm LONG	32
-	1	1	1	1320908-7	SPACER, STRIP GUIDE	30
-	1	1	1	2119959-1	ASSEMBLY, STRIP GUIDE	29
-	1	1	1	455888-3	SPACER, CRIMPER	28
-	1	1	1	1320928-6	STRIP GUIDE	24
-	1	1	1	2168083-2	SCR, SKT HD CAP, RoHS, M4 X 8.0	21
-	2	2	2	1-18028-2	WASHER, FLAT, REG M4	20
-	1	1	1	2119533-1	STRIPPER, SIDE FEED	19
-	1	1	1	2119806-1	INSERT, SHEAR	13
-	1	1	1	3-22280-3	SPRING, COMPRESSION	12
-	1	1	1	1-356885-4	STOP, SHEAR	11
-	1	1	1	2119805-1	SHEAR HOLDER, FRONT	10
-	1	1	1	454276-5	FLOATING SHEAR, FRONT	9
-	1	1	1	7-1803054-0	ANVIL, COMBINATION	8
-	1	1	1	2-240641-0	SPACER	7
-	-	-	-	-	-	6
-	1	1	1	2119757-8	DEPRESSOR, SHEAR	5
-	1	1	1	2-238011-6	BLOCK, CRIMPER SPACER	4
-	1	1	1	6-2119785-7	CRIMPER, INSULATION OVERLAP PREMIUM	3
-	1	1	1	455888-9	SPACER, CRIMPER	2
-	1	1	1	456411-1	CRIMPER, WIRE PREMIUM	1

DIMENSIONS:		TOLERANCES UNLESS OTHERWISE SPECIFIED:		DATE	
mm	0 PLC ±.5	1 PLC ±.5	2 PLC ±.5	3 PLC ±.5	4 PLC ±.5
	ANGLES ±.0001				
MATERIAL	FINISH	WEIGHT	SCALE	SHEET	REV
			1:2	3 OF 4	A



LOC		DIST		REVISIONS			
A	66	P	LTH	DESCRIPTION	DATE	DWN	APVD
		-		SEE SHEET 1			

### FEED TYPE PNEUMATIC



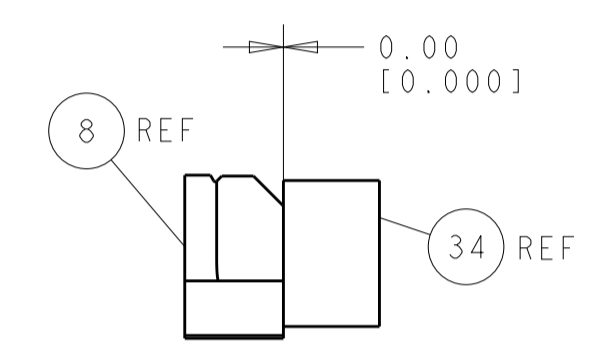
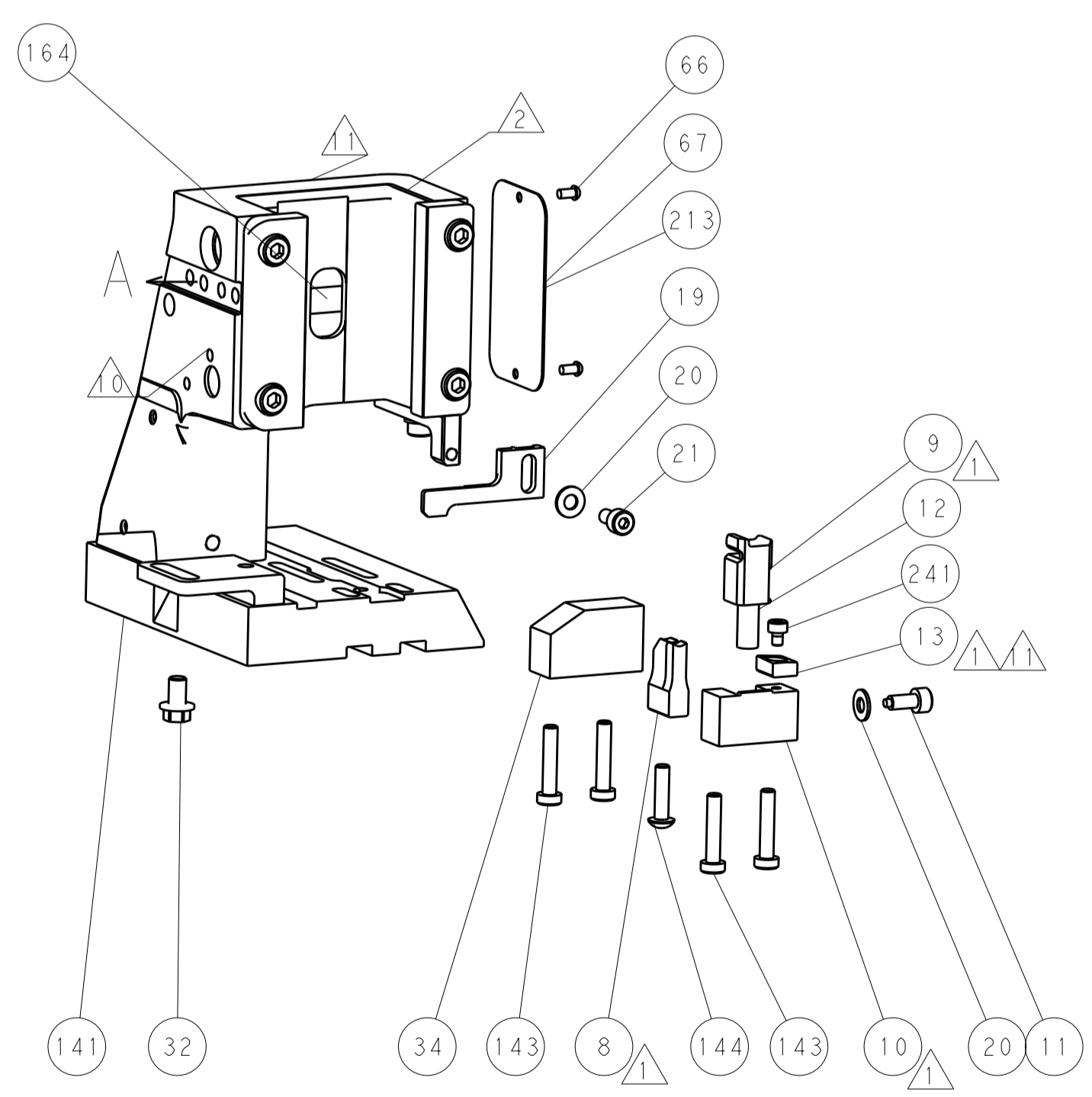
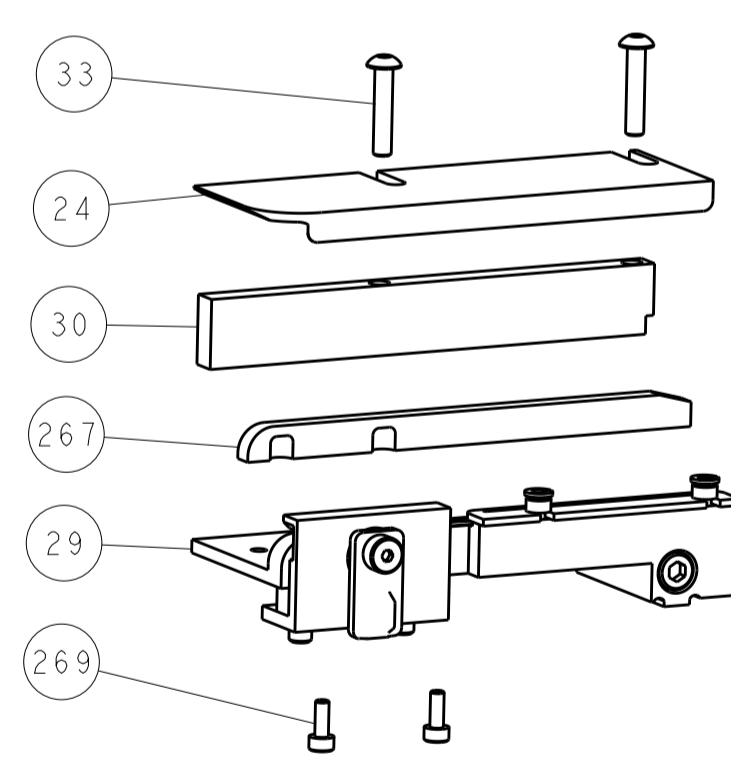
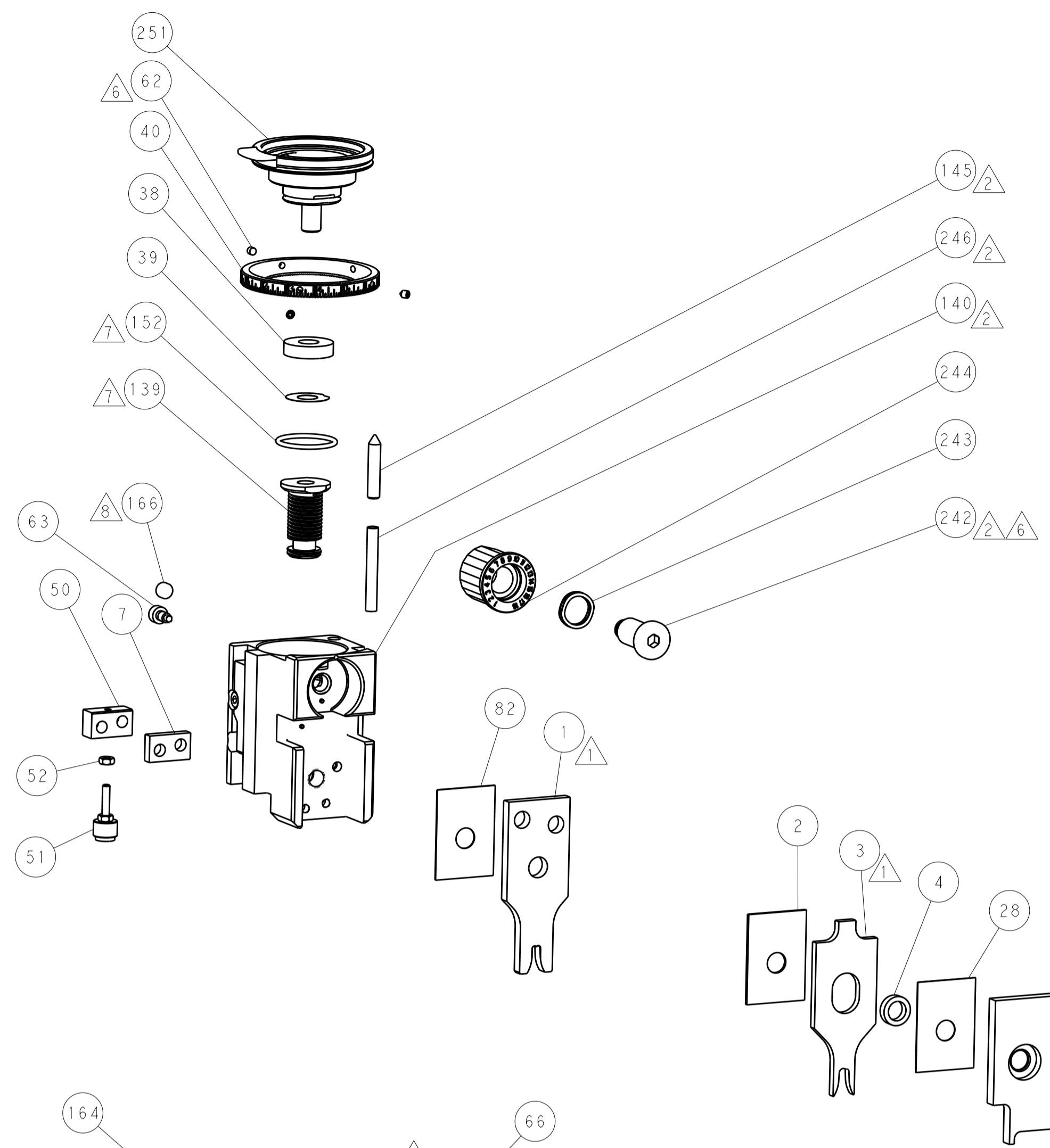
### SERVO LATCH PLATE



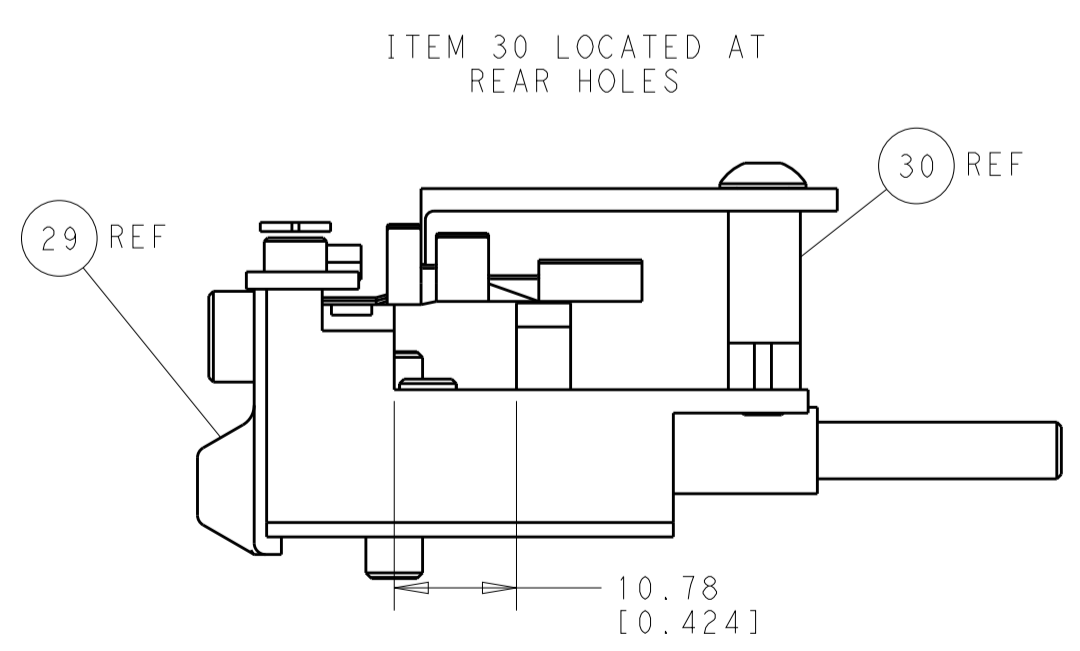
### CAM POSITION



AIR FEED



TERMINAL SUPPORT LOCATION



FEED TRACK POSITION  
GUIDE BY INSULATION BARREL

**PACIFIC VERSION**  
 Shown on sheets 3 of 4 & 4 of 4  
 (Atlantic version shown on sheets 1 of 4 & 2 of 4)

<small>THIS DRAWING IS UNPUBLISHED. RELEASED FOR PUBLICATION. IT IS THE PROPERTY OF TYCO ELECTRONICS CORPORATION. IT IS TO BE USED ONLY FOR THE PROJECT AND FOR THE CUSTOMER'S USE. IT IS TO BE RETURNED TO TYCO ELECTRONICS CORPORATION UPON COMPLETION OF THE PROJECT. IT IS NOT TO BE REPRODUCED OR TRANSMITTED IN ANY FORM OR BY ANY MEANS, ELECTRONIC OR MECHANICAL, INCLUDING PHOTOCOPYING, RECORDING, OR BY ANY INFORMATION STORAGE AND RETRIEVAL SYSTEM. WITHOUT THE WRITTEN PERMISSION OF TYCO ELECTRONICS CORPORATION.</small>		DWN Y. YIN CHK G. BAILEY APVD H. GUO	19OCT2014 19OCT2014F 19OCT2014	NAME Ocean Side Feed Applicator	SIZE A1	CAGE CODE 00779	DRAWING NO 2266534	RESTRICTED TO A
DIMENSIONS: mm 	TOLERANCES UNLESS OTHERWISE SPECIFIED: 0 PLC ±.5 1 PLC ±0.5 2 PLC ±0.13 3 PLC ±0.013 4 PLC ±0.001 ANGLES ±.1	PRODUCT SPEC APPLICATION SPEC WEIGHT MATERIAL	SCALE 1:2	SHEET 4	OF 4	REV A	Customer Accessible Production Drawing	