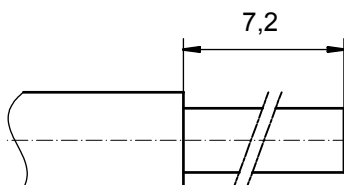


STRIPPING DIMENSIONS



Directive 2002/95/EC
„RoHS“
Compliant

NOTES:

CRIMPING:
USE CRIMP TOOL: 360X10409X
WITH TOOL INSERT: 36-000060
SELECTOR SETTINGS: 7 FOR AWG 10
6 FOR AWG 12

3	1	REAR SIDE	COPPER ALLOY	min. 8µin HARD GOLD over min. 50µin NICKEL
2	1	RETAINING RING	COPPER ALLOY	NICKEL PLATED
1	1	MATING SIDE	COPPER ALLOY	min. 30µin HARD GOLD over min. 50µin NICKEL
item	quantity	part description	material	plating

APPROVAL # FREIGABE # DEBLOCAGE # AUTORIZACION # APPROVAL	
CUSTOMER APPROVAL DATE:	
NAME:	TITLE:
COMPANY NAME:	
APPROVAL # FREIGABE # DEBLOCAGE # AUTORIZACION # APPROVAL	

partlist			
tolerance ISO 2768-m		dim. in mm	
date		name	
drawn		03.01.08 Schmidt	
appd.		03.01.08 Koch	
norm			
d-old			
a		Origin	
rev.		description	
date		name	
DO NOT ALTER CAD DRAWING BY HAND		tolerance ISO 2768-m	
THIS DRAWING MAY NOT BE COPIED OR REPRODUCED IN ANY WAY, AND MAY NOT BE PASSED ON TO A THIRD PARTY WITHOUT WRITTEN PERMISSION. OWNERSHIP AND COPYRIGHT OF CONEC GmbH		dim. in mm	
DO NOT ALTER CAD DRAWING BY HAND		date	
DO NOT ALTER CAD DRAWING BY HAND		name	
DO NOT ALTER CAD DRAWING BY HAND		scale: 8:1	
DO NOT ALTER CAD DRAWING BY HAND		material: see partlist	
DO NOT ALTER CAD DRAWING BY HAND		title: HIGH POWER CONTACT FEMALE CRIMP VERSION 30A D-SUB COMBINATION	
DO NOT ALTER CAD DRAWING BY HAND		dwg no: Inventor 10	
DO NOT ALTER CAD DRAWING BY HAND		DIN-A3	
DO NOT ALTER CAD DRAWING BY HAND		sh: 1	
DO NOT ALTER CAD DRAWING BY HAND		part no: 13-000311	

