



# SAW filters for infrastructure systems

## Series/Type: **B4063**

The following products presented in this data sheet are being withdrawn.

Ordering Code	Substitute Product	Date of Withdrawal	Deadline Last Orders	Last Shipments
B39931B4063U810		2009-09-25	2009-12-31	2010-03-31

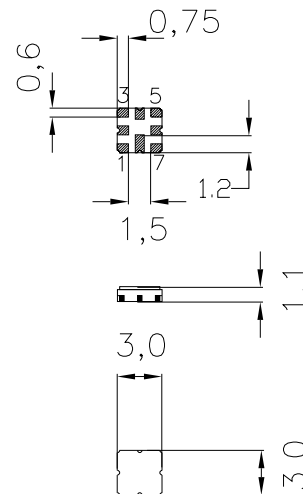
For further information please contact your nearest EPCOS sales office, which will also support you in selecting a suitable substitute. The addresses of our worldwide sales network are presented at [www.epcos.com/sales](http://www.epcos.com/sales).


 Ceramic package **QCC8D**
**Features**

- Compact RF duplexer for cordless telephone ISM
- No matching network required for operation at 50 Ω
- Ceramic package for **Surface Mounted Technology (SMT)**

**Terminals**

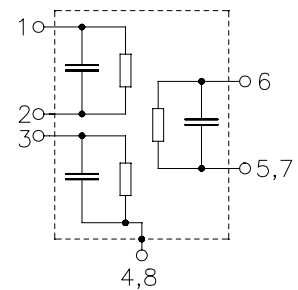
- Ni , gold-plated



Dimensions in mm, approx. weight 0,037 g

**Pin configuration**

6	Ant
1	Tx
3	Rx
5, 7	Ant - ground
2	Tx - ground
4,8	Case / Rx - ground



Type	Ordering code	Marking and Package according to	Packing according to
B4063	B39931-B4063-U810	C61157-A7-A72-X-27	F61074-V8101-Z000

Electrostatic Sensitive Device (ESD)

**Maximum ratings**

Operable temperature range	$T$	- 10/+ 55	°C	
Storage temperature range	$T_{stg}$	- 40/+ 85	°C	
DC voltage	$V_{DC}$	5	V	
Input power	$P_{IN}$	5	dBm	


**Characteristics Tx - Ant**

 Operable temperature range  $T_A = -10$  to  $55$  °C

 Ant term. impedance  $Z_{Ant} = 50$  Ω

 Port 1 term. impedance  $Z_{Port 1} = 50$  Ω

 Port 2 term. impedance  $Z_{Port 2} = 50$  Ω

		min.	typ.	max.	
<b>Center frequency</b>	$f_c$	—	926,25	—	MHz
<b>Maximum insertion attenuation</b>	$\alpha_{max}$	—	3,0	3,6	dB
924,40 ... 928,10 MHz					
<b>Amplitude ripple (p-p)</b>	$\Delta\alpha$	—	0,4	1,5	dB
924,40 ... 928,10 MHz					
<b>Absolute attenuation</b>	$\alpha$				
450,00 ... 906,20 MHz		30	34	—	dB
946,30 ... 970,00 MHz		25	31	—	dB
970,00 ... 3500,00 MHz		30	39	—	dB


**Characteristics Rx - Ant**

 Operable temperature range  $T_A = -10$  to  $55$  °C

 Ant term. impedance  $Z_{Ant} = 50$  Ω

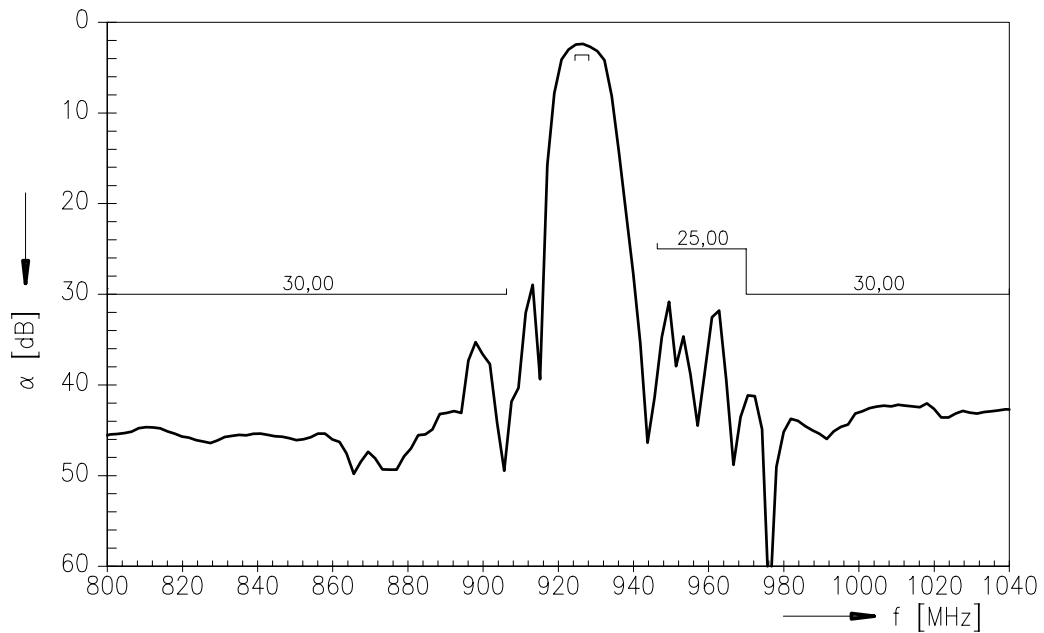
 Port 1 term. impedance  $Z_{Port 1} = 50$  Ω

 Port 2 term. impedance  $Z_{Port 2} = 50$  Ω

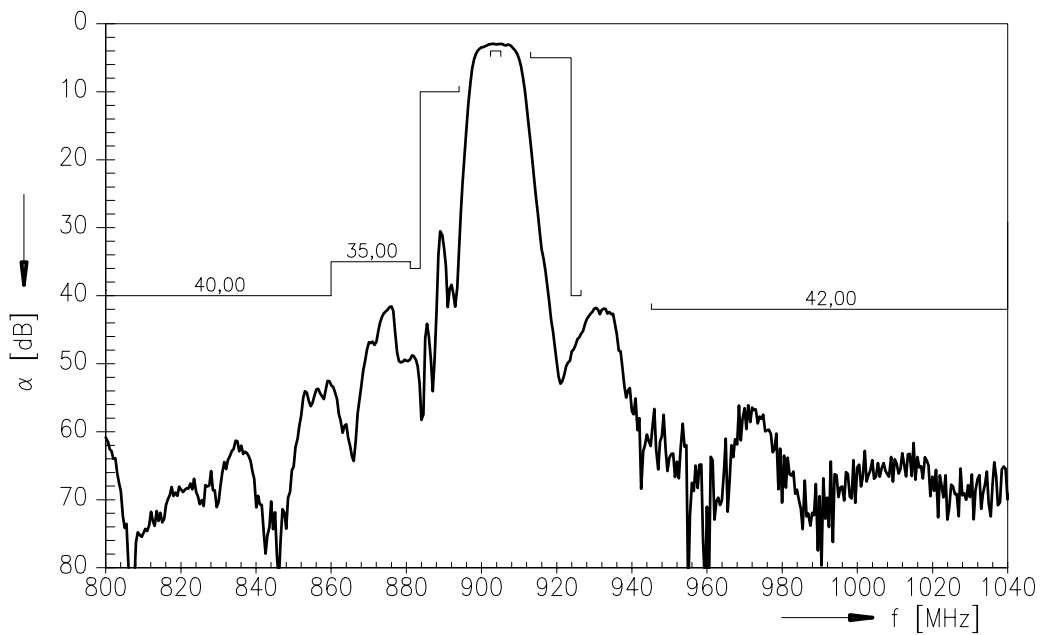
		min.	typ.	max.	
<b>Center frequency</b>	$f_c$	—	903,75	—	MHz
<b>Maximum insertion attenuation</b>	$\alpha_{max}$	—	3,1	4,0	dB
902,40 ... 905,10 MHz					
<b>Amplitude ripple (p-p)</b>	$\Delta\alpha$	—	0,2	1,5	dB
902,40 ... 905,10 MHz					
<b>Absolute attenuation</b>	$\alpha$				dB
450,00 ... 860,00 MHz		40	52	—	
860,00 ... 881,00 MHz		35	42	—	
881,00 ... 883,70 MHz		36	45	—	
883,70 ... 894,00 MHz		10	30	—	
913,10 ... 923,80 MHz		5	18	—	
923,80 ... 926,50 MHz		40	45	—	
945,20 ... 1600,00 MHz		42	48	—	
1600,00 ... 2000,00 MHz		30	35	—	



Frequency response Tx :

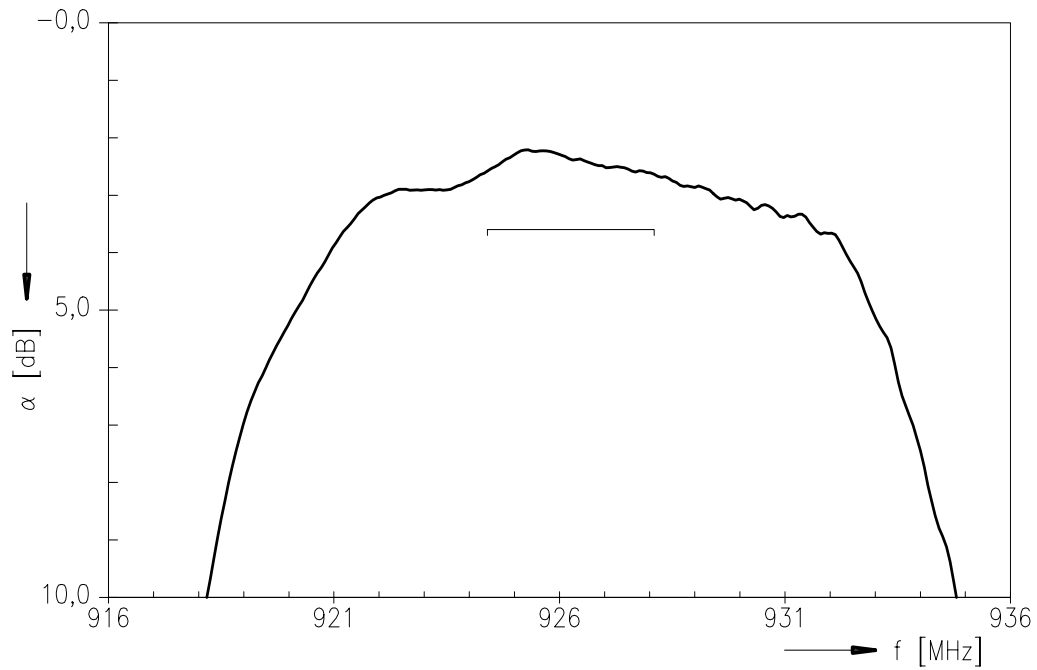


Frequency response Rx :

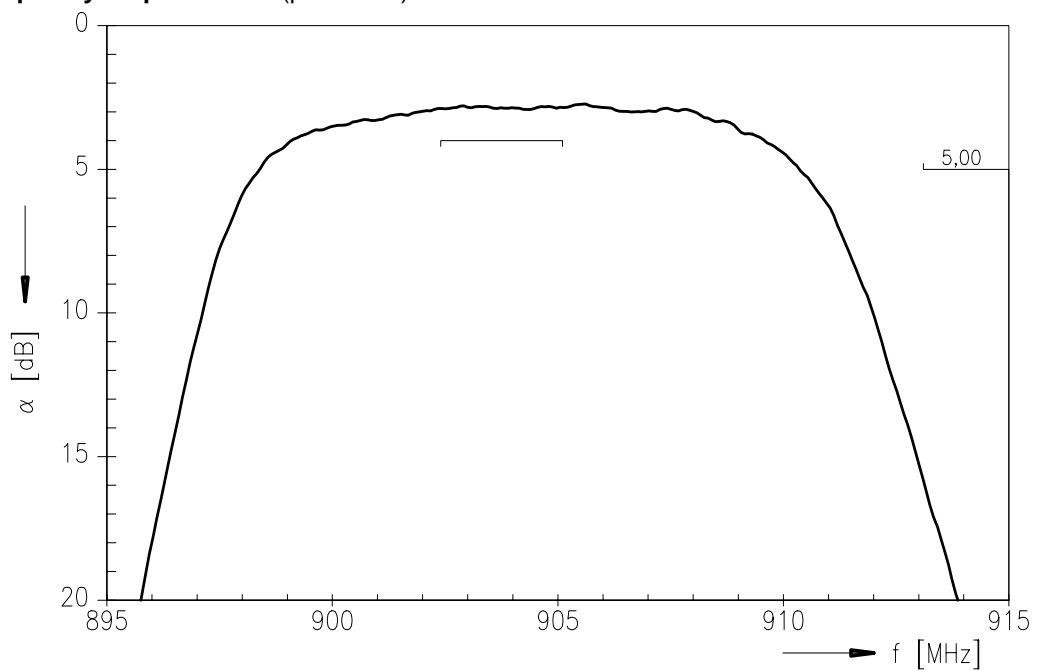




Frequency response Tx : (passband)

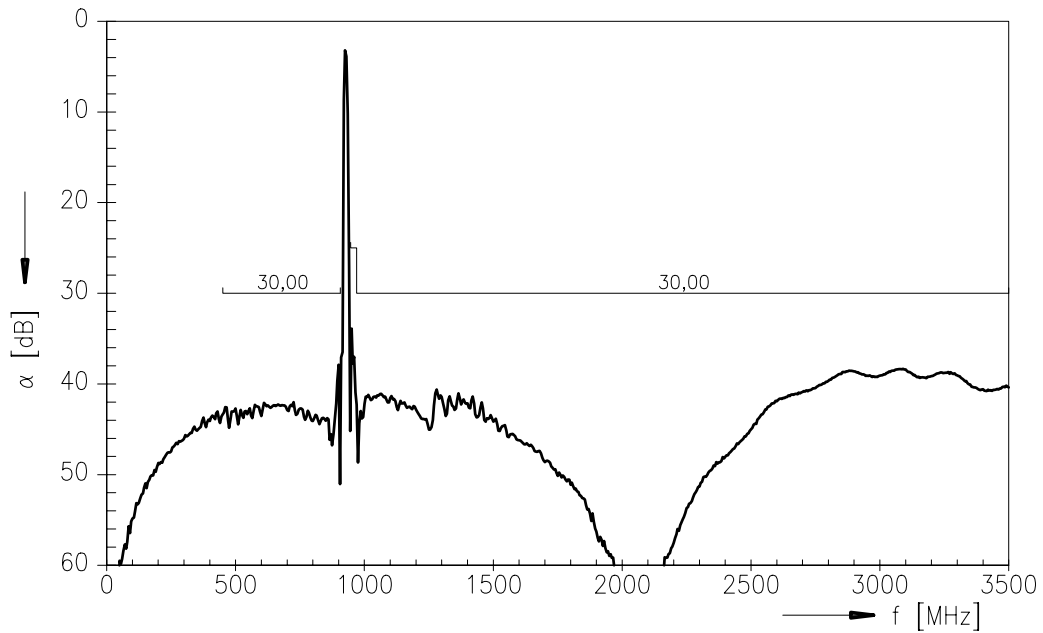


Frequency response Rx : (passband)

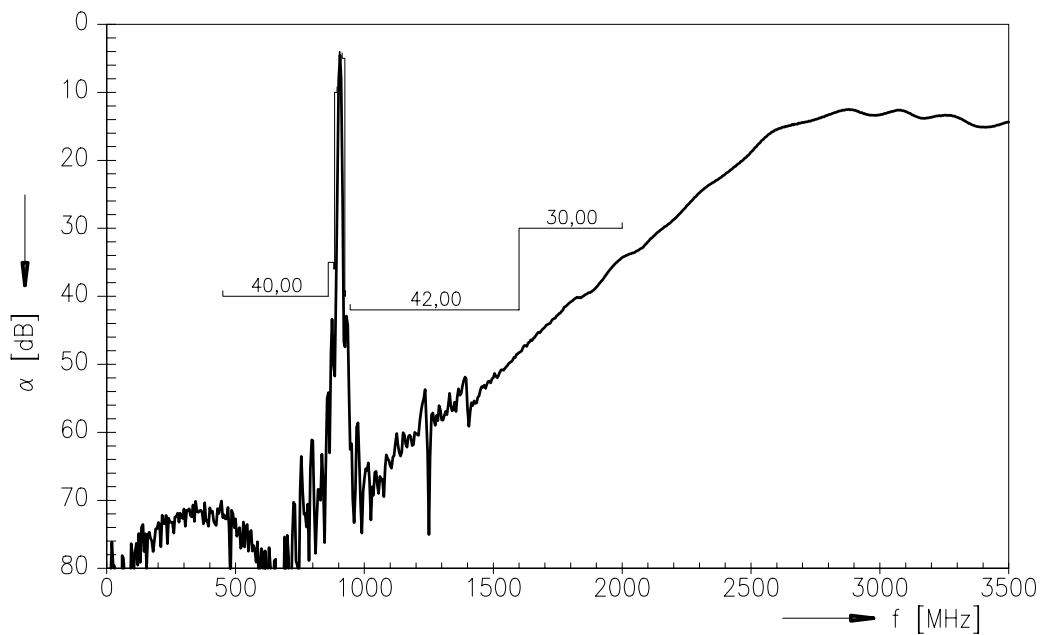




Frequency response Tx : (wideband)



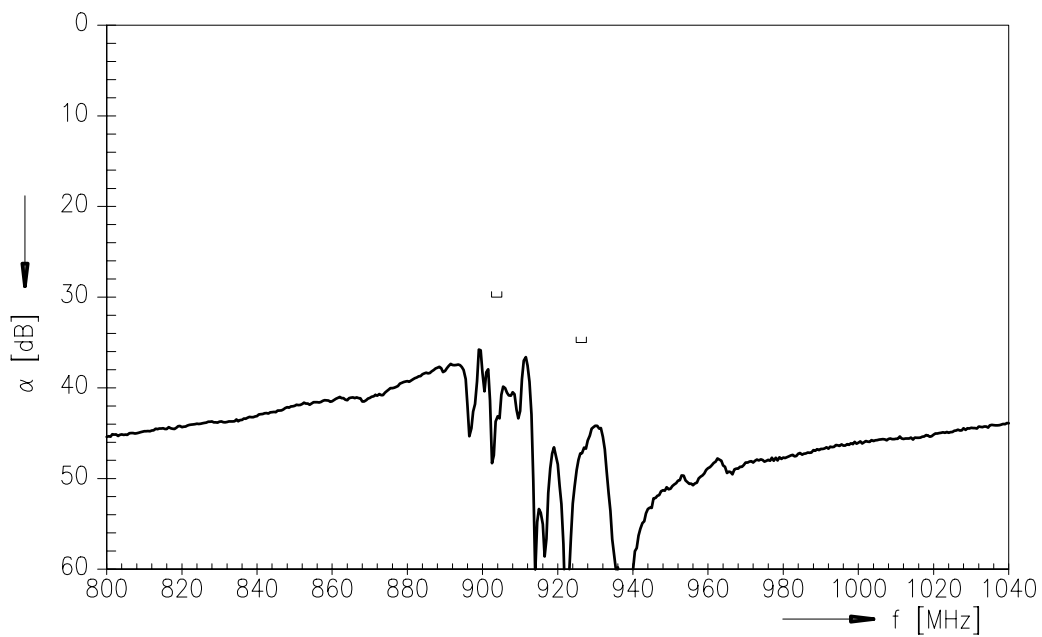
Frequency response Rx : (wideband)




**Isolation between Tx and Rx**

Operating temperature range  $T = -10$  to  $55$  °C  
 Ant term. impedance  $Z_{Ant} = 50$  Ω  
 Port 1 term. impedance  $Z_{Port 1} = 50$  Ω  
 Port 2 term. impedance  $Z_{Port 2} = 50$  Ω

		min.	typ.	max.	
<b>Absolute attenuation</b>	$\alpha$				
	924,40 ... 928,10 MHz	35	44	—	dB
	902,40 ... 905,10 MHz	30	38	—	dB

**Isolation between Tx and Rx :**






**Published by EPCOS AG**  
**Surface Acoustic Wave Components Division, SAW MC WT**  
**P.O. Box 80 17 09, D-81617 München**

© EPCOS AG 2000. All Rights Reserved.

As far as patents or other rights of third parties are concerned, liability is only assumed for components per se, not for applications, processes and circuits implemented within components or assemblies.

The information describes the type of component and shall not be considered as assured characteristics.

Terms of delivery and rights to change design reserved.

For questions on technology, prices and delivery please contact the sales offices of EPCOS AG or the international representatives.

Due to technical requirements components may contain dangerous substances. For information on the type in question please also contact one of our sales offices.