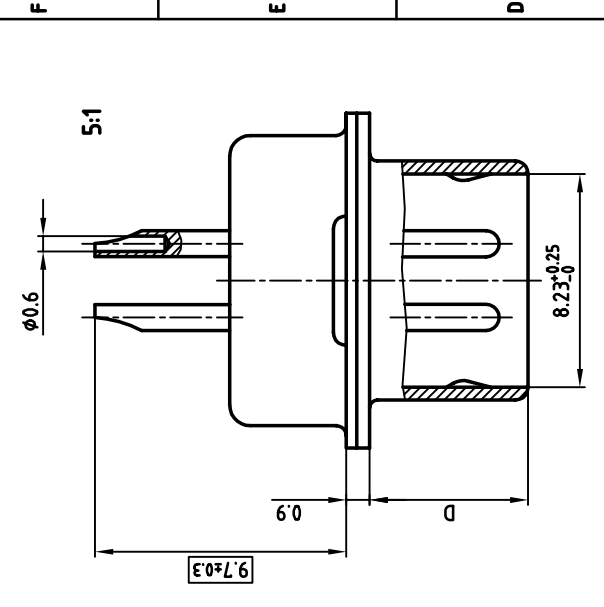
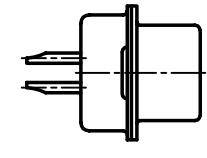
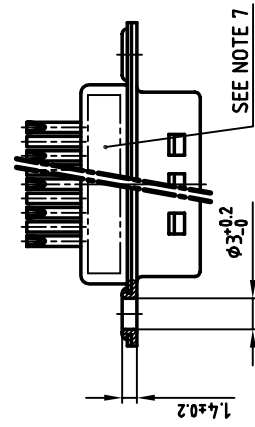
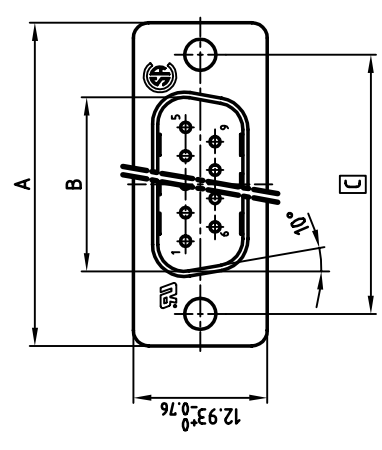


used for: D-SUB FILTER



**NOTES:**

1. METALSHELLS: STEEL; min. 320µ" TIN
2. INSULATORS: PBT GF UL 94 V-0, BLACK
3. CONTACTS: COPPER ALLOY
4. PLATING: min. 8µ" HARD GOLD OVER min. 50µ" NICKEL
5. SOLDER CUP ACCEPTS CABLE AWG 26
6. CAPACITANCE: 830pF ±20%
7. CONNECTOR IS PART MARKED: [PART-NO.] CONEC Y/WW
8. [ ] = CRITICAL DIMENSION



THIS DRAWING MAY NOT BE COPIED OR REPRODUCED IN ANY WAY, AND MAY NOT BE PASSED ON TO A THIRD PARTY WITHOUT WRITTEN PERMISSION.  
 OWNERSHIP AND COPYRIGHT OF CONEC GMBH DO NOT ALTER CAD DRAWING BY HAND

POS.	A <sup>-0.76</sup>	B <sup>+0.25</sup>	C	D <sup>-0.3</sup>	Part NO.
9	31.19	16.79	25.00 <sup>+0.12</sup> <sub>-0.13</sub>	6.12	24-1A11680X
15	39.52	25.12	33.30 <sup>+0.15</sup> <sub>-0.1</sub>	6.12	24-1A11690X
25	53.42	38.84	47.04 <sup>+0.13</sup>	5.99	24-1A11700X
37	69.70	55.30	63.50 <sup>+0.13</sup>	5.99	24-1A11710X

tolerance	2:1 (5:1)	
material:	SEE NOTES	
title:	D-SUB FILTER MALE	
name	9-37pos. SOLDER CUP	
date	26.03.	name
drawn	26.03.	Parrel
appd.	E. Mickenbecker	DIN-A
norm	DIN 41522	dwg no:
e-old		AutoCAD 2000
		3
		sh:1/1
part no:		SEE TABLE

AutoCAD 2000  
 24K1A229  
 SEE TABLE