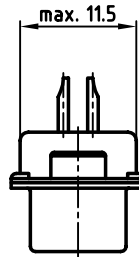
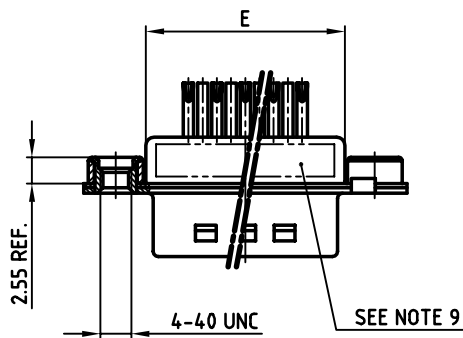
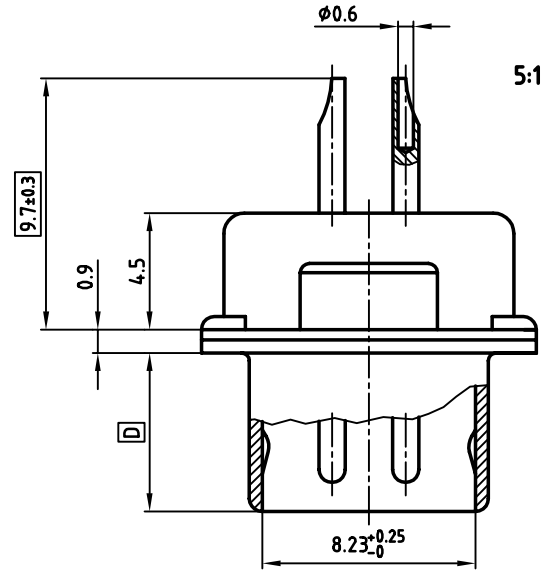
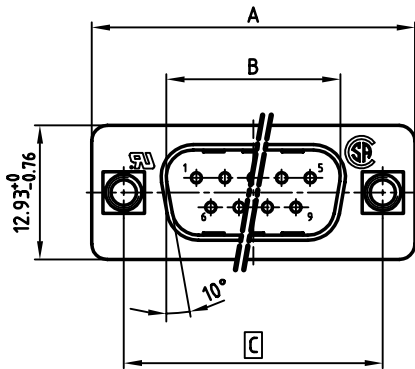


used for: D-SUB FILTER



NOTES:

1. METALSHELLS: STEEL; min. 320µ" TIN
2. INSULATORS: PBT GF UL 94 V-0, BLACK
3. CONTACTS: COPPER ALLOY
PLATING: min. 8µ" HARD GOLD OVER min. 50µ" NICKEL
SOLDER CUP ACCEPTS CABLE AWG 26
4. THREADED INSERT: COPPER ALLOY; min. 200µ" TIN over 80µ" NICKEL
5. COLLAR: COPPER ALLOY; min. 200µ" TIN over 80µ" NICKEL
6. CAPACITANCE: 830pF ±20%
7. DIELECTRIC WITHSTANDING VOLTAGE: 424 VDC
8. MAXIMUM TORQUE VALUE FOR THREAD: 6" LBS
9. CONNECTOR IS PART MARKED: PART-NO. CONEC Y/WW
10. = CRITICAL DIMENSION

POS.	A -0.76	B +0.25	C	D -0.3	max. E	PART-NO.
9	31.19	16.79	25.00 ^{+0.12} / _{-0.13}	6.12	19.60	241A11800X
15	39.52	25.12	33.30 ^{+0.15} / _{-0.1}	6.12	27.90	241A11810X
25	53.42	38.84	47.04 ^{+0.13}	5.99	41.60	241A11820X
37	69.70	55.30	63.50 ^{+0.13}	5.99	58.00	241A11830X

APPROVAL # FREIGABE # DEBLOCAGE # AUTORIZACION # APPROVAL

CUSTOMER APPROVAL DATE:

NAME: _____ TITLE: _____

COMPANY NAME: _____

APPROVAL # FREIGABE # DEBLOCAGE # AUTORIZACION # APPROVAL

THIS DRAWING MAY NOT BE COPIED OR REPRODUCED IN ANY WAY, AND MAY NOT BE PASSED ON TO A THIRD PARTY, WITHOUT WRITTEN PERMISSION.

OWNERSHIP AND COPYRIGHT OF CONEC Gmbh

DO NOT ALTER CAD DRAWING BY HAND

rev.	description	date	name

tolerance

scale: 2:1 (5:1)

material: SEE NOTES

title: **D-SUB FILTER MALE**
9-37pos. SOLDER CUP
with threaded insert

dwg no: AutoCAD 2000 DIN-A

24K1A331 3 sh:1/1

part no: SEE TABLE

