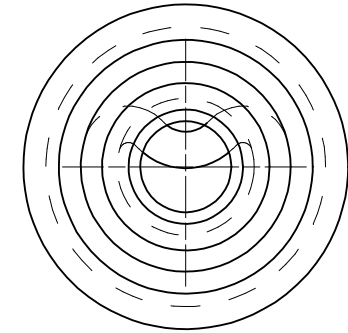
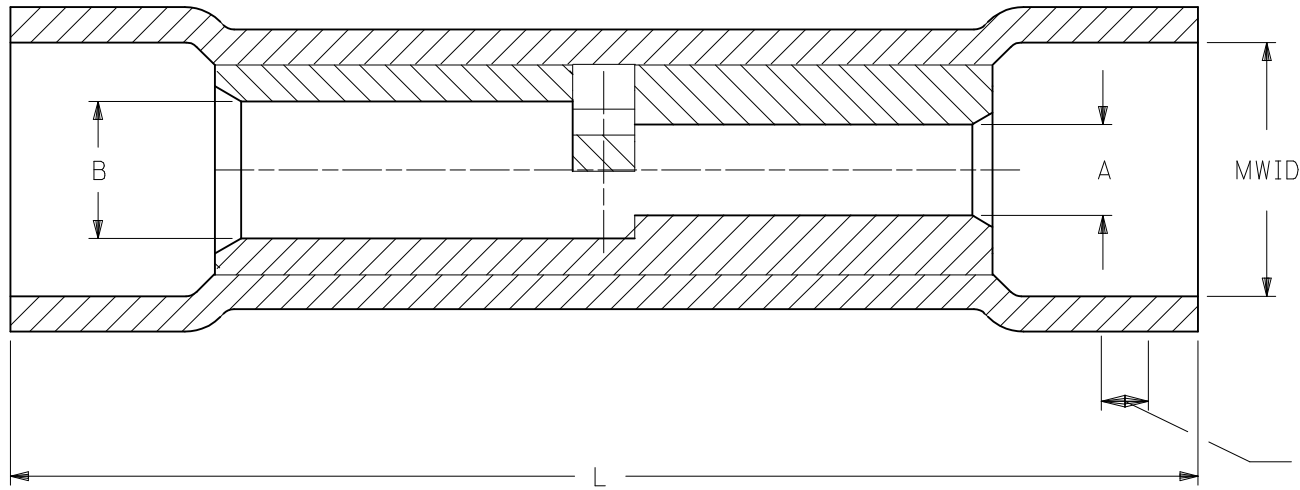
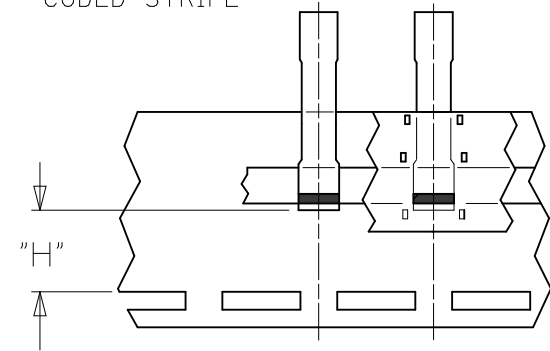


6		5		4		3		2		1		
LOOSE PIECE		(A1) TAPE MOUNTED		INSULATION	CODE STRIPE	"A"		"B"		MWID	"L" MAX.	"H"
MATERIAL NO.	ENG'G P/N	MATERIAL NO.	ENG'G P/N	COLOR (REF)	COLOR (REF)	AWG.	MIN. DIA.	AWG.	MIN. DIA.			±.03/0.8
191540022	BA-63IX	191540057	BA-63IXT	BLUE	RED	22-18	.065/1.65	16-14	.088/2.24	.17/4.3	1.08/27.4	.42/10.7
191540035	CB-646X	191540036	CB-646XT	YELLOW	BLUE	16-14	.091/2.31	12-10	.137/3.48	.26/6.6	1.30/33.0	.35/8.9
191540044	DC-654X	191540043	DC-654XT	RED	YELLOW	12-10	.138/3.50	#8	.165/4.19	.33/8.4	1.50/38.1	-
191540047	ED-662X	-		BLUE	RED	#8	.175/4.44	#6	.222/5.64	.43/10.9	1.84/46.7	-



APPROXIMATE
LOCATION OF COLOR
CODED STRIPE



PARTS ON TAPE

NOTES:

- MATERIALS:
 SPLICE: MATTE-TIN PLATED COPPER
 INSULATION: PVC, COLOR PER CHART
- MWID = MAXIMUM WIRE INSULATION WIRE DIAMETER
- PARTS ARE ROHS COMPLIANT.

SALES DRAWING

REDRAWN FROM DOC CD-21001

ADD MAT'L NUMBER EC NO: WNA2011-0305 DRWN: GROSAS01 2013/03/01 CHKD: APPR: JMACNEIL 2013/04/24 DESCRIPTION REV	QUALITY SYMBOLS	GENERAL TOLERANCES (UNLESS SPECIFIED)		DIMENSION STYLE IN/MM		SCALE ---	DESIGN UNITS INCH	THIRD ANGLE PROJECTION	
	▼=0 ∇=0	4 PLACES	± ---	± ---	DRAWN BY RCM	DATE 1991/10/28	TITLE STEP DOWN BUTT SPLICE INSULKRIMP		
		3 PLACES	± ---	± ---	CHECKED BY	DATE			
		2 PLACES	± ---	± ---	APPROVED BY JMACNEIL	DATE 2011/04/27	MOLEX INCORPORATED		
	1 PLACE	± ---	± ---	MATERIAL NO. SEE CHART		DOCUMENT NO. SD-19154-007	SHEET NO. 1 OF 1		
A1		DRAFT WHERE APPLICABLE MUST REMAIN WITHIN DIMENSIONS		SIZE A		THIS DRAWING CONTAINS INFORMATION THAT IS PROPRIETARY TO MOLEX INCORPORATED AND SHOULD NOT BE USED WITHOUT WRITTEN PERMISSION			