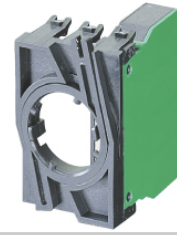


**RAFIX 22 QR - Contact block with silver contacts, with coupling, without lamp socket, screw terminals, 2 NO**  
**1.20.124.020/0000**



#### Dimensions

|                              |                     |
|------------------------------|---------------------|
| Dimensions with coupling     | 39.5 x 49.9 x 30 mm |
| Mounting depth without cable | 56.4 mm             |

#### Mechanical design

|  |  |
|--|--|
| Mounting   | snap on coupling and actuator                    |
| Contact system                                     | bridge-contact self cleaning                     |
| Contact materials                                  | Ag   |
| Contact arrangement                                | 2 NO   |
| Coupling position 1 (1/2)                          | 2 NO   |
| Coupling position 3 (5/6), centre                  | -  |
| Coupling position 2 (3/4)                          | -  |
| NC contact forcibly actuated acc. to IEC 60947-5-1 | yes  |
| Terminals  | screw terminals                                  |
| Terminal marking                                   | color encoded                                    |
| Robustness   | 100 N  |
| Wire range solid wires without wire end sleeves    | 2 x 0.75 ... 2.5 mm <sup>2</sup>                 |
| Wire range stranded wires without end sleeves      | 2 x 1.0...1.5 (2 x 0.08 ... 2.5) mm <sup>2</sup> |
| Stripping length, solid or stranded                | 8 mm   |
| Wire range with wire end sleeves                   | 2 x 0.75 ... 1.5 mm <sup>2</sup>                 |

#### Electric characteristics acc. to IEC 60947

|  |  |
|--|--|
| Rated insulation voltage AC/DC                       | 400 V  |
| Rated peak voltage                                   | 6,000 V                                      |
| Rated operating current I <sub>e</sub> AC 12 / DC 12 | 10 A   |
| Rated operating current I <sub>e</sub> AC-15         | 125 V/10 A, 250 V/6 A, 400 V/3.5 A           |
| Rated operating current I <sub>e</sub> DC-13 Q300    | 24V/2.75A, 60V/1.1A, 125V/0.55A, 250V/0.275A |
| Degree of pollution                                  | 3  |
| Positive opening travel                              | 3 mm   |
| Operating speed                                      | 5 ... 1000 mm/c                              |

#### Electric characteristics acc. to IEC 61058

|                                     |  |
|-------------------------------------|--|
| Resistive load AC                   | 10 A / 250 V; 7.5 A / 400 V            |
| Motor load AC                       | 6 A / 250 V; 4 A / 400 V (5 A / 250 V) |
| Peak input current filament lamp AC | 36 A                                   |
| Peak capacity input current AC      | 100 A                                  |

|                  |    |
|------------------|----|
| Protection class | II |
|------------------|----|

### Lamp characteristics

|                      |        |
|----------------------|--------|
| Lamp characteristics | BA 9 s |
|----------------------|--------|

### Other specifications

|  |  |
|--|--|
| Operating life at 10 A/250 V AC                | 70,000 (10A), 200,000 (5A)               |
| Switching reliability at 24V/5mA DC            | $10 \times 10^{-6}$                      |
| Robustness                                     | acc. to IEC 60947-5-5                    |
| Corresponding to CE                            | acc. EU-guideline NSR 72/73              |
| Shock resistance acc. to IEC 60068-2-27        | 15 g at 11 ms, amplitude half sinusoidal |
| Resistance to vibrations acc. to IEC 60068-2-6 | 5 g at 10 ... 500 Hz                     |
| Ambient temp. operating min.                   | -25 °C                                   |
| Ambient temp. operating max.                   | +70°C (+50°C)                            |
| Storage temperature min.                       | -40 °C                                   |
| Storage temperature max.                       | +80 °C                                   |
| Flame class acc. to UL 94                      | V 0                                      |
| Hot wire ignition acc. to IEC 60695-2-1        | yes                                      |
| Environmental resistance                       | acc. to IEC 60068-2-14, -30, -33 and -78 |
| ROHS compliant                                 | yes                                      |
| REACH compliant                                | yes                                      |

with contact block

