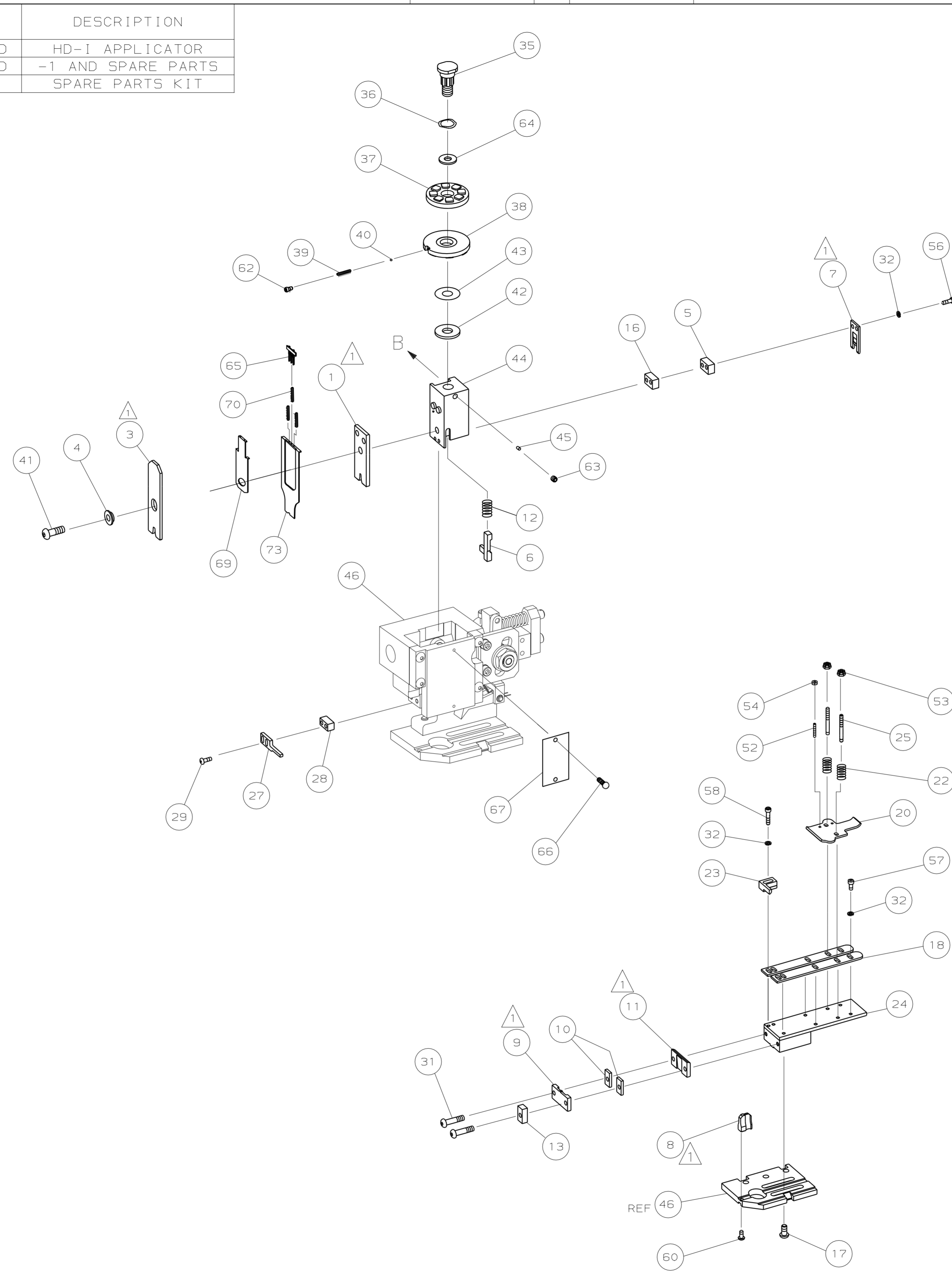


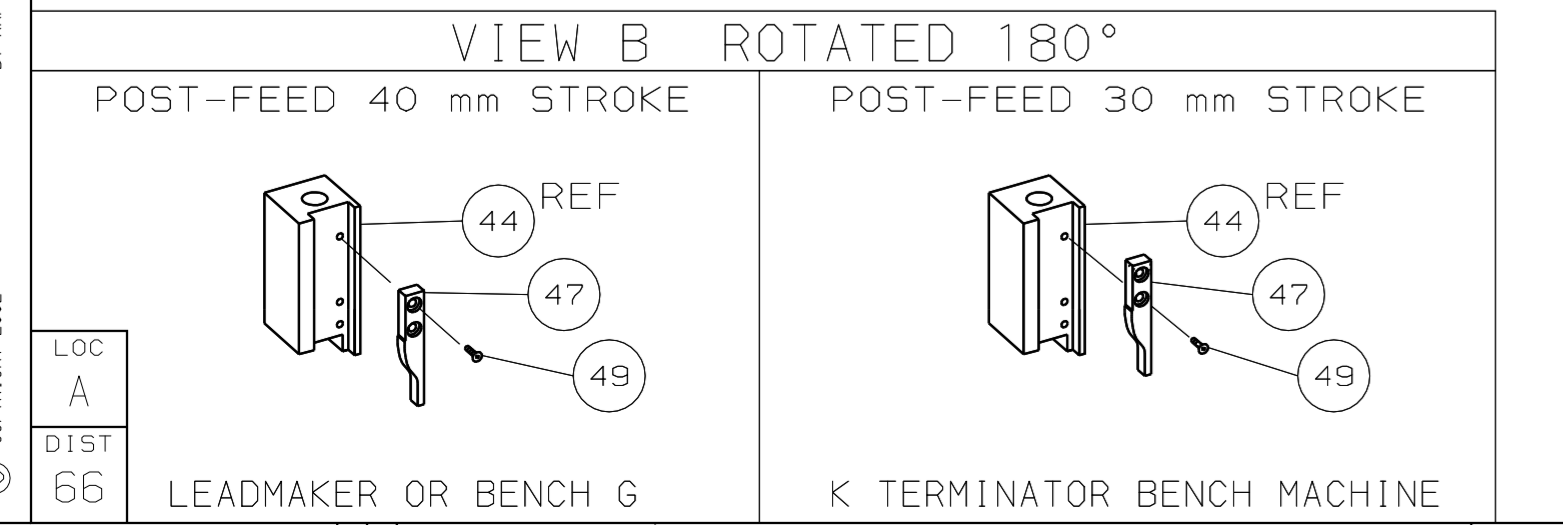
PART NUMBER	REV	FIRST USED	TERMINATOR	FEED TYPE	DESCRIPTION
1339773-1	A		BENCH & LEADMAKER	MECH POST FEED	HD-I APPLICATOR
7-1339773-1	A		BENCH & LEADMAKER	MECH POST FEED	-1 AND SPARE PARTS
7-1339773-7	A				SPARE PARTS KIT

CRIMP DATA AMP TERMINAL AMP CRIMP SPECS			
TERMINAL NAME: FASTON CONNECTOR, .110 SRS REC. CONTACT			
CRIMP	SIZE	TYPE	RANGE
WIRE	2.03 [.080 IN]	F	2 x 0.38mm ²
INSUL	4.06 [.160 IN]	F	2 x 1.86 [2 x .073 IN]
WIRE STRIP LENGTH SEE APPL SPEC.		APPL INSTRUCTION 408-8323	
TERMINAL APPL SPEC 114-20109/4		FEED 16.90 [.665 IN]	
TERMINALS APPLIED			
180457	-	-	-
-	-	-	-
-	-	-	-
-	-	-	-
-	-	-	-
-	-	-	-
-	-	-	-
-	-	-	-
-	-	-	-
WIRE SIZE mm ² AWG	CRIMP HEIGHT		PIN PN AND LENGTH [IN]
2 x 0.38mm ²	1.32 ±0.05 [.052 ±.002 IN]		1-354779-8 [.3080]
-	-	-	-
-	-	-	-
-	-	-	-
-	-	-	-
-	-	-	-
-	-	-	-
-	-	-	-
-	-	-	-
-	-	-	-
-	-	-	-
-	-	-	-
-	-	-	-
-	-	-	-
-	-	-	-
-	-	-	-
-	-	-	-



QTY	REV	REV	REV	PART NO	DESCRIPTION	ITEM NO
-	1	1		1490525-8	DEPRESSOR, WIRE	73
-	1	1		1339773	PRINT, APPLICATOR LOG SHEET	72
-	1	1		1338705-2	DOCUMENTATION PACKAGE	71
-	3	3		2-23147-2	SPRING, DEPRESSOR	70
-	1	1		1490524-1	SPACER, DEPRESSOR	68
-	1	1		461264-1	PLATE, IDENTIFICATION	67
-	2	2		21017-2	SCR, DRIVE (#2X.19) ID PLATE	66
-	1	1		1424350-1	HOLDER, PIN, WIRED	65
-	1	1		986950-1	WASHER, FLAT PRECISION	64
-	1	1		3-18031-0	SCR, SKT SET (M6X6) RAM	63
-	1	1		18023-9	SCR, SKT CAP (M4X6) CP DSC	62
-	1	1		18024-7	SCR, BHC (M4X10) ANVIL	60
-	2	2		1-18023-3	SCR, SHC (M4X16) HOLD DOWN	58
-	5	5		18023-9	SCR, SHC (M4X6) STRIP GUIDE	57
-	2	2		1-18023-2	SCR, SHC (M4X12) SLUG BLADE	56
-	2	2		18029-1	NUT, HEX (M3) DRAG	55
-	2	2		986965-1	NUT, HEX SL (M4) DRAG STUD	54
-	2	2		2-18032-2	SCR, SKT SET (M3X10) DRAG	52
-	1	1		18024-3	SCR, BHC (M3X10) CAM	49
-	1	1		1338676-1	CAM, POST-FEED 30 & 40 mm ST	47
-	1	1		1338662-1	APPLICATOR, BASIC (SUBASSY)	46
-	1	1		690191-1	PLUG, NYLON	45
-	1	1		1320998-1	RAM	44
-	1	1		690125-1	WASHER, LAMINATED	43
-	1	1		690124-1	WASHER, RAM	42
-	1	1		2-18024-6	SCREW, BHC (M8X25) CRIMPER	41
-	1	1		23241-1	BALL, STEEL	40
-	1	1		2-22278-7	SPRING, COMPRESSION	39
-	1	1		1-1320922-0	DISC, INSULATION	38
-	1	1		354777-1	WIRE DISC, PLASTIC	37
-	1	1		22480-5	WASHER, SPRING	36
-	1	1		690212-1	POST, RAM	35
-	9	9		18025-2	WASHER, LOCK (M4) SHEAR BL	32
-	2	2		1-18024-0	SCR, BHC (M4X20) SHEAR PL	31
-	2	2		18024-8	SCR, BHC (M4X12) STRIPPER	29
-	1	1		3-690451-2	SPACER, STRIPPER	28
-	1	1		240639-1	STRIPPER	27
-	2	2		1320906-1	DRAG, STUD	25
-	1	1		1-1320995-7	STRIP GUIDE	24
-	1	1		240825-2	PLATE, STRIP HOLD DOWN	23
-	2	2		4-22281-1	SPRING, DRAG	22
-	1	1		1338665-1	DRAG, STOCK	20
-	2	2		1338663-4	GUIDE, LOWER STRIP	18
-	4	4		1-18024-8	SCR, BHC (M6X12) STRIP GD PL	17
-	1	1		1338708-1	SPACER, SLUG BLADE	16
-	1	1		1-690481-3	SPACER, HOLD DOWN	13
-	1	1		23846-1	SPRING, HOLD DOWN	12
-	1	1		240644-5	PLATE, REAR SHEAR	11
-	2	2		1-240645-0	SPACER, SHEAR PLATE	10
-	1	1		1-240642-0	PLATE, FRONT SHEAR	9
-	1	2		2-1333216-9	ANVIL	8
-	1	1		1-240651-6	BLADE, SLUG	7
-	1	1		2-455892-8	HOLD DOWN, TERMINAL	6
-	1	1		240641-2	SPACER, SLUG BLADE	5
-	1	1		238009-1	SPACER, BLOCK CRIMPER	4
-	1	2		456134-9	CRIMPER, INSULATION	3
-	1	2		4-456405-4	CRIMPER, WIRE	2
-	77	-71	-1			

- RECOMMENDED SPARE PARTS.
- GREASE RAM, CAM, CAM FOLLOWER AND FEED ROD LIGHTLY.
 - LUBRICATE DAILY PER THE APPLICATOR INSTRUCTION SHEET SUPPLIED WITH THE APPLICATOR.
 - DO NOT REFERENCE FOR DOUBLE WIRE CRIMP HEIGHTS.



DIMENSIONS: mm [INCHES] MATL - HT TR - FIN -
DO NOT SCALE PRINT.
TOLERANCES UNLESS OTHERWISE SPECIFIED:
1 PLC DEC ±
2 PLC DEC ±
3 PLC DEC ±
ANGLES ±
SURF TEXTURE: ✓
REMOVE BURRS, BREAK SHARP EDGES RO.38 MAX

PARTS LIST		MACHINE REF	
DR	APP	REV	APPL
M. CLIFFORD	16FEB06	16FEB06	HD-I
CHK -	REL 16-02-06	M. CLIFFORD	
NAME END FEED HD-I APPLICATOR		MACHINE REF HD-I APPL	
SCALE	DWG NO	SHEET	REV
-	1339773	1 OF 1	A

CAGE CODE 00779 CUSTOMER AND ASSEMBLY DRAWING

THIS DRAWING IS A CONTROLLED DOCUMENT.

LAYOUT L13395681
SET UP GAGE 458638-3

2002 RELEASED FOR PUBLICATION BY AMP INCORPORATED. ALL RIGHTS RESERVED.
THIS DRAWING IS UNPUBLISHED.
AMP 1756 REV 3-92