

REVISION AG

DO NOT SCALE FROM THIS PRINT

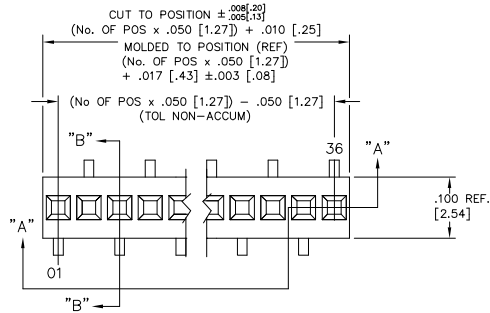
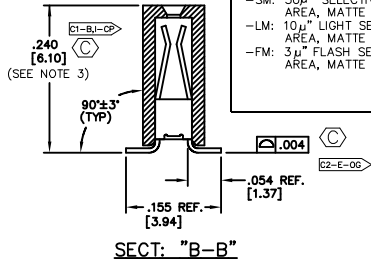
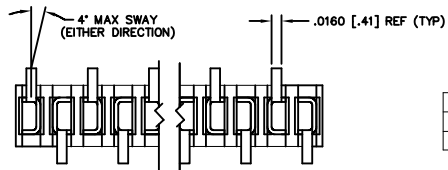
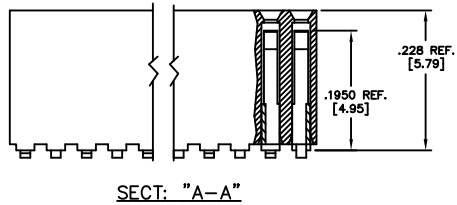
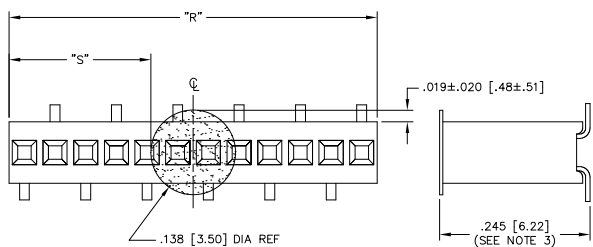


FIG. 1



CRITICAL DIMENSION INSPECTION TABLE	
ASSEMBLY OPERATION	IN-PROCESS INSPECTION
BREAK CARRIER	C1



"R" = USE MEASURED DIMENSION (REF)
 "S" = {"R" - .138 [3.50]} / 2 ±.020 [.51]

FIG. 3

-K: POLYIMIDE FILM PAD
 AVAILABLE ON POS 7 - 36 ONLY

PROPRIETARY NOTE
 THE INFORMATION CONTAINED HEREIN IS THE PROPERTY OF SAMTEC CORPORATION. IT IS TO BE USED ONLY FOR THE SPECIFIC PURPOSES AND CONDITIONS FOR WHICH IT WAS OBTAINED. IT IS NOT TO BE REPRODUCED OR TRANSMITTED IN ANY FORM OR BY ANY MEANS, ELECTRONIC OR MECHANICAL, INCLUDING PHOTOCOPYING, RECORDING, OR BY ANY INFORMATION STORAGE AND RETRIEVAL SYSTEM, WITHOUT THE WRITTEN PERMISSION OF SAMTEC CORPORATION.

RSM-1XX-XX-XXX-S-X

DIMENSIONS ARE IN INCHES UNLESS OTHERWISE NOTED TOLERANCES ARE:

ONE PLACE DECIMALS: ±.1	THREE PLACE DECIMALS: ±.005	ANGLES: ±5°
TWO PLACE DECIMALS: ±.01	FOUR PLACE DECIMALS: ±.0020	

TITLE: RECEPTACLE SURFACE MOUNT (SINGLE ROW) **DWG NO: RSM-1XX-XX-XXX-S-X SHEET 1 OF 1**

NOTES:

- PIN ONE TO BE IN DIRECTION OF ARROW ON TUBE
- FOR ODD POSITIONS, LOSE ONE PIN PER CUT FOR EVEN POSITIONS, LOSE TWO PINS PER CUT MEASURED AT BEND RADIUS
- MINIMUM RETENTION: 1.0 LB.
- CUT FLASH TO BE .010" MAX WITH NO FLASH ALLOW IN HOLES OR EXTENDING BELOW LEADS.
- CONTACTS NOT TO BE INTERLEAVED.
- ⊙ REPRESENTS A CRITICAL DIMENSION.
- INSULATOR MATERIAL: BLACK, LCP, UL 94 V0

OPTION	TUBE	PLUG
-P	PT-1-24-01-14	TP-03
-	PT-1-24-03-64	TP-24
-K	PT-1-24-03-64	TP-24

LEAD STYLE
 -02: C-64-02-X

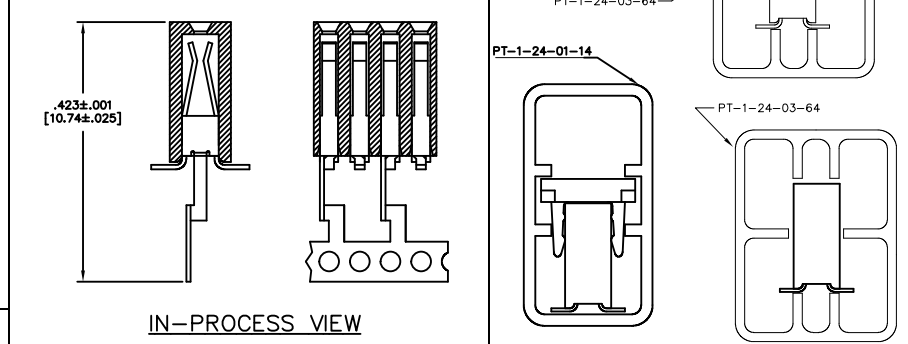
PLATING SPECIFICATIONS

- S: 30μ" SELECTIVE GOLD IN CONTACT AREA, MATTE TIN ON TAIL
- F: 3μ" FLASH SELECTIVE GOLD IN CONTACT AREA, MATTE TIN ON TAIL
- L: 10μ" LIGHT SELECTIVE GOLD IN CONTACT AREA, MATTE TIN ON TAIL
- T: MATTE TIN CONTACT AND TAIL
- STL: 30μ" SELECTIVE GOLD IN CONTACT CONTACT AREA, TIN/LEAD (90/10+/-5%) TAIL
- TM: MATTE TIN CONTACT AND TAIL
- SM: 30μ" SELECTIVE GOLD IN CONTACT AREA, MATTE TIN ON TAIL
- LM: 10μ" LIGHT SELECTIVE GOLD IN CONTACT AREA, MATTE TIN ON TAIL
- FM: 3μ" FLASH SELECTIVE GOLD IN CONTACT AREA, MATTE TIN ON TAIL

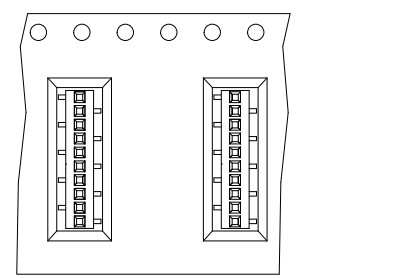
OPTIONS

- P: PICK AND PLACE PAD (USE PPP-20)(SEE FIG. 2) (AVAILABLE ON POS. 6 THRU 36 ONLY)
- K: POLYIMIDE FILM PAD (AVAILABLE ON POS. 7 THRU 36 ONLY) (.005 [.13] THICKNESS WITH SILICONE ADHESIVE)(SEE FIG 3)
- TR: TAPE AND REEL

BODY SPECIFICATION
 -S: SINGLE ROW (USE RSM-XX-S)



IN-PROCESS VIEW

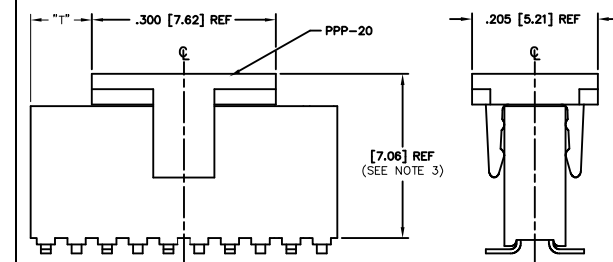


USER DIRECTION OF UNREELING

POCKET NOT DETAILED

FIG. 4

-TR: TAPE AND REEL



"R" = USE MEASURED DIMENSION (REF)
 "T" = {"R" - .300}/2 ±.020

FIG. 2

-P: PICK AND PLACE PAD
 AVAILABLE ON POS 6 - 36 ONLY

RSM-1XX-XX-XXX-S-X-MKT

samtec

520 PARK EAST BLDG. NEW ALBANY, INDIANA 47150
 PHONE (812) 944-6735 P.O. BOX 1147
 CODE 58322

MADE BY: REG REIMMER 11-24-82
 DESIGNED BY: []

RSM-1XX-XX-XXX-S-X
 SHEET 1 OF 1