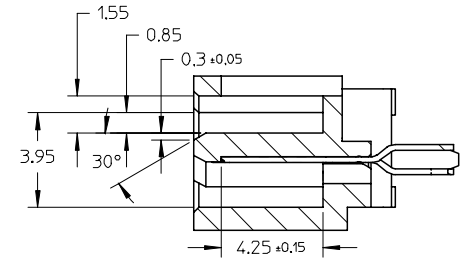
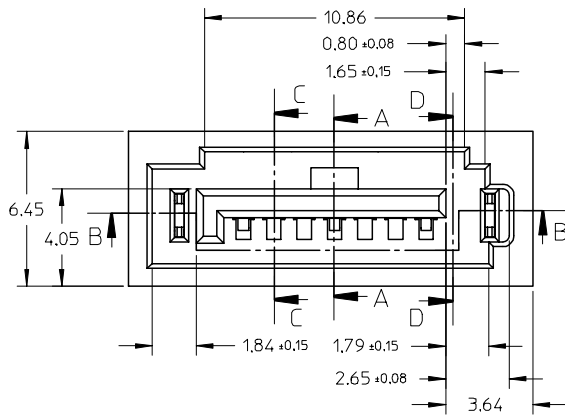


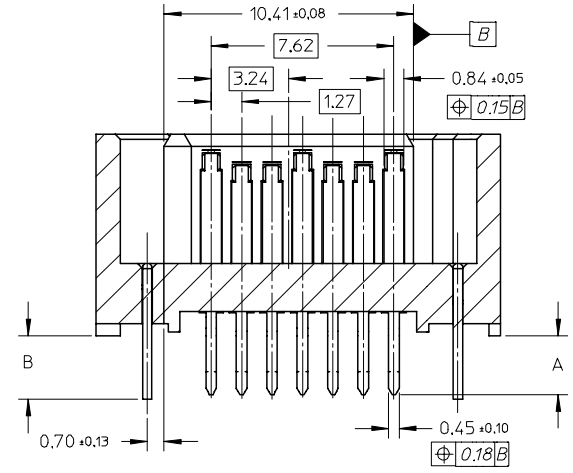
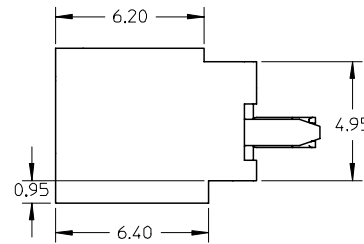
SECTION A-A



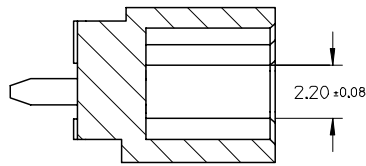
SECTION C-C



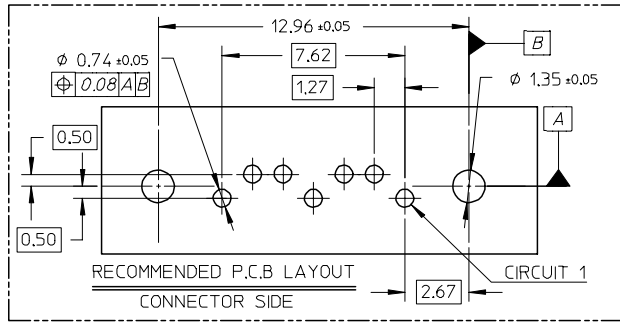
SECTION D-D



SECTION B-B



EC NO: SH2005-0037 DRWN:GRMA 2004/10/25 CHKD: 2004/10/26 APPR: YTYAP 2004/10/28	DESCRIPTION	QUALITY SYMBOLS	GENERAL TOLERANCES (UNLESS SPECIFIED)		SCALE 5:1	DESIGN UNITS METRIC	THIRD ANGLE PROJECTION	REVISE ON CAD ONLY
		▽ = 0 ◻ = 0	mm	INCH	DIMENSION STYLE MM ONLY	TITLE	HIGH SPEED CONNECTOR 1.27MM PITCH VERTICAL DIP SOLDER TAIL	
C	REV	4 PLACES ± --- ± ---	DRAFT WHERE APPLICABLE		DRAWN BY GRATE	DATE 2004/02/02	MATERIAL NO. MOLEX INCORPORATED	
		3 PLACES ± --- ± ---	MUST REMAIN WITHIN DIMENSIONS		CHECKED BY YAJUN	DATE 2004/02/02	DOCUMENT NO. SD-67800-008	SHEET NO. 1 OF 3
		2 PLACES ± 0.15 ± ---	THIS DRAWING CONTAINS INFORMATION THAT IS PROPRIETARY TO MOLEX INCORPORATED AND SHOULD NOT BE USED WITHOUT WRITTEN PERMISSION		APPROVED BY SAM	DATE 2004/02/02	B	
		1 PLACE ± 0.25 ± ---						
		ANGULAR ± 1 °						



678004065	SEE NOTE2(c)							
678004062	SEE NOTE2(b)	3.25	3.45	2.40+/-0.05				
678004061	SEE NOTE2(a)							
678004055	SEE NOTE2(c)							
678004052	SEE NOTE2(b)	2.85	3.05	2.00+/-0.05	THERMAL	NATURE		
678004051	SEE NOTE2(a)				PLASTIC	COLOR		
678004045	SEE NOTE2(c)							
678004042	SEE NOTE2(b)	2.45	2.65	1.60+/-0.05				
678004041	SEE NOTE2(a)							
678004085	SEE NOTE2(c)							
678004082	SEE NOTE2(b)	3.25	3.45	2.40+/-0.05				
678004081	SEE NOTE2(a)							
678004075	SEE NOTE2(c)							
678004072	SEE NOTE2(b)	2.85	3.05	2.00+/-0.05	THERMAL	PROCESS		
678004071	SEE NOTE2(a)				PLASTIC	BLUE C		
678004035	SEE NOTE2(c)					ΔE<3	TIN LEAD	
678004032	SEE NOTE2(b)	2.45	2.65	1.60+/-0.05				
678004031	SEE NOTE2(a)							
678004025	SEE NOTE2(c)							
678004022	SEE NOTE2(b)	3.25	3.45	2.40+/-0.05				
678004021	SEE NOTE2(a)							
678004015	SEE NOTE2(c)							
678004012	SEE NOTE2(b)	2.85	3.05	2.00+/-0.05	THERMAL	BLACK		
678004011	SEE NOTE2(a)				PLASTIC			
678004005	SEE NOTE2(c)							
678004002	SEE NOTE2(b)	2.45	2.65	1.60+/-0.05				
678004001	SEE NOTE2(a)							

MATERIAL NUMBER	PLATING TYPE	DIM A	DIM B	P.C.B THICKNESS	PLASTIC TYPE	PLASTIC COLOR	REMARK

678004165	SEE NOTE2(c)							
678004162	SEE NOTE2(b)	3.25	3.45	2.40+/-0.05	HIGH			
678004161	SEE NOTE2(a)				TEMPERATURE			
678004155	SEE NOTE2(c)				THERMAL			
678004152	SEE NOTE2(b)	2.85	3.05	2.00+/-0.05	PLASTIC	NATURE		
678004151	SEE NOTE2(a)					COLOR		
678004145	SEE NOTE2(c)							
678004142	SEE NOTE2(b)	2.45	2.65	1.60+/-0.05				
678004141	SEE NOTE2(a)							
678004185	SEE NOTE2(c)							
678004182	SEE NOTE2(b)	3.25	3.45	2.40+/-0.05	HIGH			
678004181	SEE NOTE2(a)				TEMPERATURE			
678004175	SEE NOTE2(c)				THERMAL	PROCESS		
678004172	SEE NOTE2(b)	2.85	3.05	2.00+/-0.05	PLASTIC	BLUE C		
678004171	SEE NOTE2(a)					ΔE<3	TIN LEAD	
678004135	SEE NOTE2(c)							
678004132	SEE NOTE2(b)	2.45	2.65	1.60+/-0.05				
678004131	SEE NOTE2(a)							
678004125	SEE NOTE2(c)							
678004122	SEE NOTE2(b)	3.25	3.45	2.40+/-0.05	THIGH			
678004121	SEE NOTE2(a)				TEMPERATURE			
678004115	SEE NOTE2(c)							
678004112	SEE NOTE2(b)	2.85	3.05	2.00+/-0.05	THERMAL	BLACK		
678004111	SEE NOTE2(a)				PLASTIC			
678004105	SEE NOTE2(c)							
678004102	SEE NOTE2(b)	2.45	2.65	1.60+/-0.05				
678004101	SEE NOTE2(a)							
MATERIAL NUMBER	PLATING TYPE	DIM A	DIM B	P.C.B THICKNESS	PLASTIC TYPE	PLASTIC COLOR	REMARK	

EC NO: SH2005-0037 DRWN:GRMA 2004/10/25 CHKD: 2004/10/26 APPR: YTYAP 2004/10/28	QUALITY SYMBOLS ▽ = 0 ◁ = 0	GENERAL TOLERANCES (UNLESS SPECIFIED)		SCALE 1:1	DESIGN UNITS METRIC	THIRD ANGLE PROJECTION	REVISE ON CAD ONLY		
			mm	INCH	DIMENSION STYLE MM ONLY		TITLE HIGH SPEED CONNECTOR 1.27MM PITCH VERTICAL DIP SOLDER TAIL		
		4 PLACES ± --- ± --- 3 PLACES ± --- ± --- 2 PLACES ± 0.15 ± --- 1 PLACE ± 0.25 ± ---	ANGULAR ± 1 °		DRAWN BY GRATE DATE 2004/02/02	MOLEX INCORPORATED			
		DRAFT WHERE APPLICABLE MUST REMAIN WITHIN DIMENSIONS		CHECKED BY YAJUN DATE 2004/02/02	APPROVED BY SAM DATE 2004/02/02	MATERIAL NO. SEE CHART	DOCUMENT NO. SD-67800-008	SHEET NO. 2 OF 3	
THIS DRAWING CONTAINS INFORMATION THAT IS PROPRIETARY TO MOLEX INCORPORATED AND SHOULD NOT BE USED WITHOUT WRITTEN PERMISSION									

NOTES:  
 1.MATERIAL:  
 HOUSING/COLOR: SEE CHART, GLASS, FILLED,UL94V-0,  
 TERMINAL/PEG: BRASS  
 2.TERMINAL PLATING :  
 CONTACT AREA: (a) GOLD FLASH  
 (b) GOLD, THICKNESS=0,76 MICRON MINIMUM  
 (C) GOLD,THICKNESS=0,38 MICRON MINIMUM  
 SOLDER TAIL: TIN-LEAD OR TIN PLATED 1,27 MICRON MINIMUM OVER NICKEL PLATED 1,27 MICRON MINIMUM.  
 3.POST PLATING: TIN-LEAD OR TIN PLATED 1,27MICRON MINIMUM OVER NICKEL PLATED 1,8 MICRON MINIMUM,  
 4.PACKAGING: TRAY  
 5.PRODUCT SPECIFICATION REFER TO PS-67491-001  
 6. RECOMMENDED SOLDERING PROCESS: THERMAL PLASTIC FOR WAVE SOLDEING PROCESS  
 HIGH TEMPERATURE THERMAL PLASTIC FOR IR SOLDERING PROCESS

F

F

E

E

D

D

C

C

B

B

A

A

MATERIAL NUMBER	PLATING TYPE	DIM A	DIM B	P.C.B THICKNESS	PLASTIC TYPE	PLASTIC COLOR	REMARK
678008065	SEE NOTE2(c)						
678008062	SEE NOTE2(b)	3.25	3.45	2.40+/-0.05			
678008061	SEE NOTE2(a)						
678008055	SEE NOTE2(c)						
678008052	SEE NOTE2(b)	2.85	3.05	2.00+/-0.05	THERMAL PLASTIC	NATURE COLOR	
678008051	SEE NOTE2(a)						
678008045	SEE NOTE2(c)						
678008042	SEE NOTE2(b)	2.45	2.65	1.60+/-0.05			
678008041	SEE NOTE2(a)						
678008085	SEE NOTE2(c)						
678008082	SEE NOTE2(b)	3.25	3.45	2.40+/-0.05			
678008081	SEE NOTE2(a)						
678008075	SEE NOTE2(c)						
678008072	SEE NOTE2(b)	2.85	3.05	2.00+/-0.05	THERMAL PLASTIC	PROCESS BLUE C ΔE<3	PURE TIN
678008071	SEE NOTE2(a)						
678008035	SEE NOTE2(c)						
678008032	SEE NOTE2(b)	2.45	2.65	1.60+/-0.05			
678008031	SEE NOTE2(a)						
678008025	SEE NOTE2(c)						
678008022	SEE NOTE2(b)	3.25	3.45	2.40+/-0.05			
678008021	SEE NOTE2(a)						
678008015	SEE NOTE2(c)						
678008012	SEE NOTE2(b)	2.85	3.05	2.00+/-0.05	THERMAL PLASTIC	BLACK	
678008011	SEE NOTE2(a)						
678008005	SEE NOTE2(c)						
678008002	SEE NOTE2(b)	2.45	2.65	1.60+/-0.05			
678008001	SEE NOTE2(a)						

MATERIAL NUMBER	PLATING TYPE	DIM A	DIM B	P.C.B THICKNESS	PLASTIC TYPE	PLASTIC COLOR	REMARK
678008165	SEE NOTE2(c)						
678008162	SEE NOTE2(b)	3.25	3.45	2.40+/-0.05	HIGH TEMPERATURE THERMAL PLASTIC	NATURE COLOR	
678008161	SEE NOTE2(a)						
678008155	SEE NOTE2(c)						
678008152	SEE NOTE2(b)	2.85	3.05	2.00+/-0.05	THERMAL PLASTIC	NATURE COLOR	
678008151	SEE NOTE2(a)						
678008145	SEE NOTE2(c)						
678008142	SEE NOTE2(b)	2.45	2.65	1.60+/-0.05			
678008141	SEE NOTE2(a)						
678008185	SEE NOTE2(c)						
678008182	SEE NOTE2(b)	3.25	3.45	2.40+/-0.05	HIGH TEMPERATURE THERMAL PLASTIC	PROCESS BLUE C ΔE<3	PURE TIN
678008181	SEE NOTE2(a)						
678008175	SEE NOTE2(c)						
678008172	SEE NOTE2(b)	2.85	3.05	2.00+/-0.05	THERMAL PLASTIC	NATURE COLOR	
678008171	SEE NOTE2(a)						
678008135	SEE NOTE2(c)						
678008132	SEE NOTE2(b)	2.45	2.65	1.60+/-0.05			
678008131	SEE NOTE2(a)						
678008125	SEE NOTE2(c)						
678008122	SEE NOTE2(b)	3.25	3.45	2.40+/-0.05	HIGH TEMPERATURE THERMAL PLASTIC	BLACK	
678008121	SEE NOTE2(a)						
678008115	SEE NOTE2(c)						
678008112	SEE NOTE2(b)	2.85	3.05	2.00+/-0.05	THERMAL PLASTIC	BLACK	
678008111	SEE NOTE2(a)						
678008105	SEE NOTE2(c)						
678008102	SEE NOTE2(b)	2.45	2.65	1.60+/-0.05			
678008101	SEE NOTE2(a)						

EC NO: SH2005-0037 DRWN:GRMA 2004/10/25 CHKD: 2004/10/26 APPR: YTYAP 2004/10/28	QUALITY SYMBOLS ▽ = 0 ◁ = 0	GENERAL TOLERANCES (UNLESS SPECIFIED)		SCALE 1:1	DESIGN UNITS METRIC	THIRD ANGLE PROJECTION	REVISE ON CAD ONLY		
		DIMENSION STYLE MM ONLY	TITLE HIGH SPEED CONNECTOR 1.27MM PITCH VERTICAL DIP SOLDER TAIL		MOLEX INCORPORATED				
		DRAFT WHERE APPLICABLE MUST REMAIN WITHIN DIMENSIONS		DRAWN BY GRATE DATE 2004/02/02	CHECKED BY YA JUN DATE 2004/02/02	APPROVED BY SAM DATE 2004/02/02	MATERIAL NO. ENTER-PART	DOCUMENT NO. SD-67800-008	SHEET NO. 3 OF 3
		THIS DRAWING CONTAINS INFORMATION THAT IS PROPRIETARY TO MOLEX INCORPORATED AND SHOULD NOT BE USED WITHOUT WRITTEN PERMISSION							B