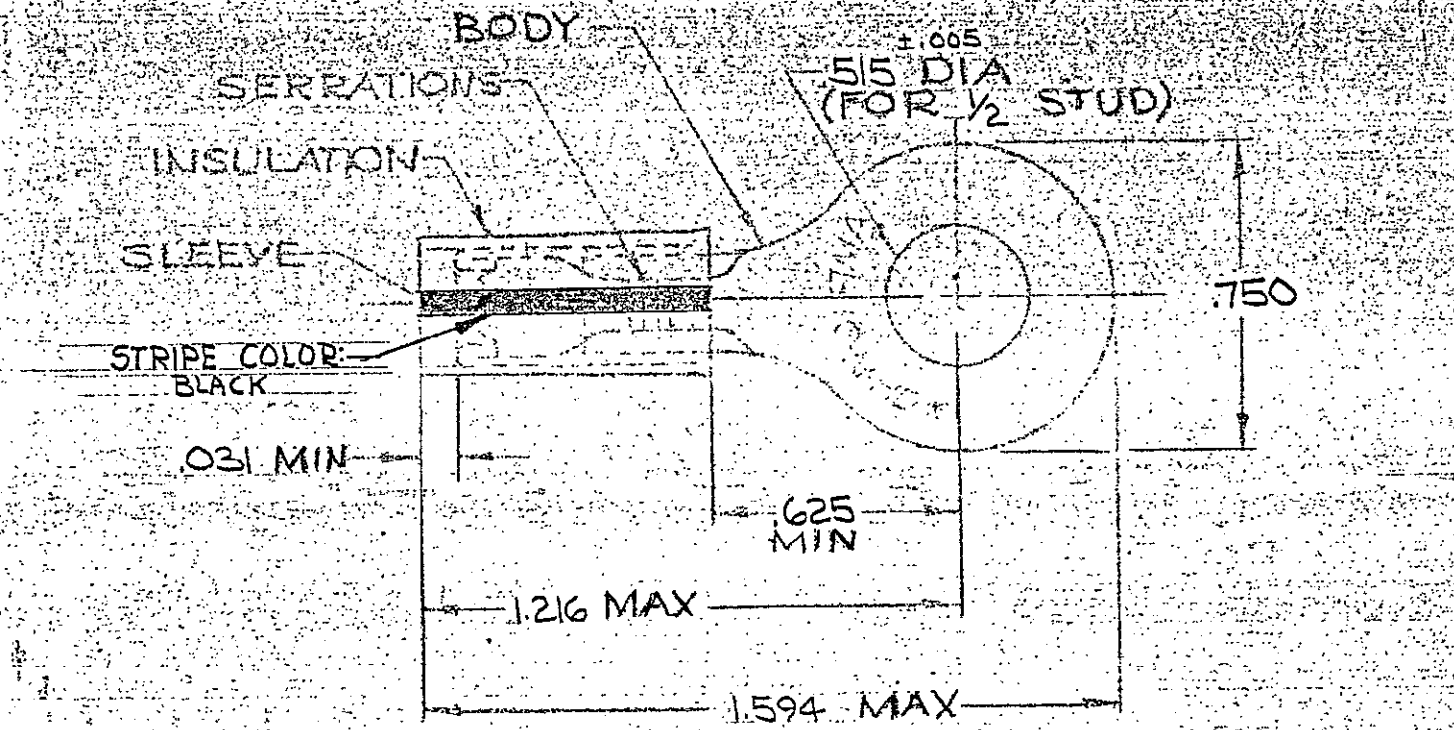


DRAWING MADE IN PERSPECTIVE PROJECTION

DESIGNED BY AMP INCORPORATED. ALL RIGHTS RESERVED. AMP PRODUCTS COVERED BY PATENTS AND/OR PATENTS PENDING.

REVISIONS

LETTER	DESCRIPTION	DATE	APPROVED
F	REV/0610-0007-98	ME 1-26-98	TM
D	REV PER G-4732	JT 7/26/88	ME
E	REV/0720-0036-93	10 3-5-93	ME



FOR 150 TO 250 WIRE INSULATION DIA.
TONGUE MATERIAL THK. = 0.048 ± 0.002

100	LOOSE PC, BOX	8-35316-1	BODY: COPPER (ASTM B152) TIN PL (ASTM B 545)
1	WIRE TERMINAL	35316	SLEEVE: COPPER (ASTM B152)
			INSULATION: YELLOW NYLON
QTY	DESCRIPTION	PART NO.	MATERIAL & FINISH
UNLESS OTHERWISE SPECIFIED DIMENSIONS ARE IN INCHES. TOLERANCES ON DECIMALS: ±.008 ANGLES: ±.5°		CONTRACT NO.	AMP INCORPORATED HARRISBURG, PENNSYLVANIA
MATERIAL		DR. W. J. ... 4-17-76	WIRE TERMINAL
SEE TABLE		CHK. R. Hoffmann 4-21-70	P.I.D.G. RING TONGUE
		APPD. D. Wabel 4-21-70	WIRE SIZE: 16-14HD
		REV. Mr. Emswiler 4-22-70	SIZE CODE IDENT NO. NUMBER
		DRWN APPD.	A 00779 35316
		OTHER APPD.	PATENTS