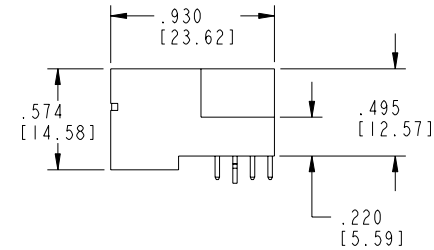
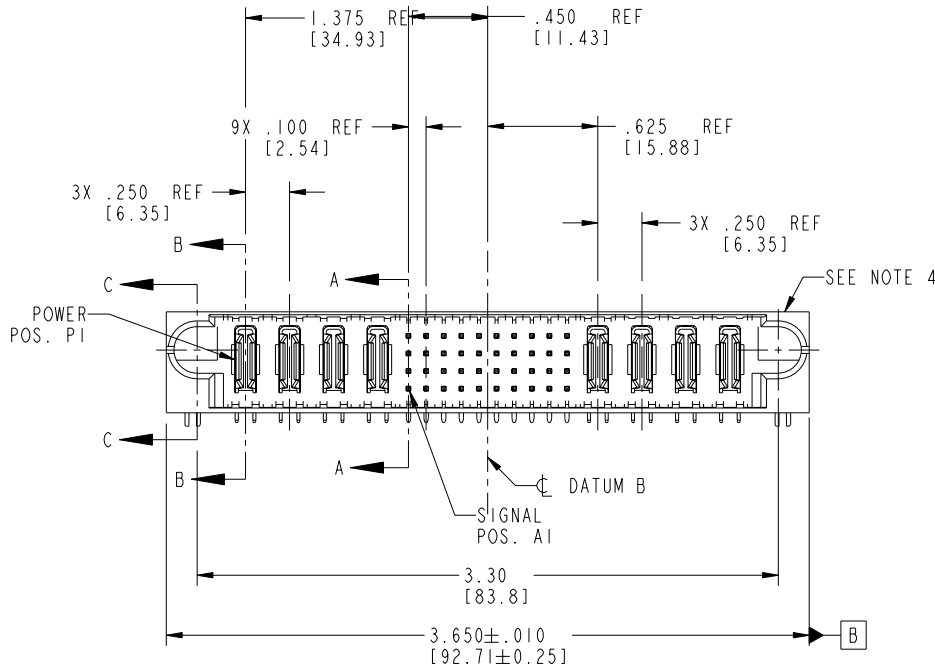
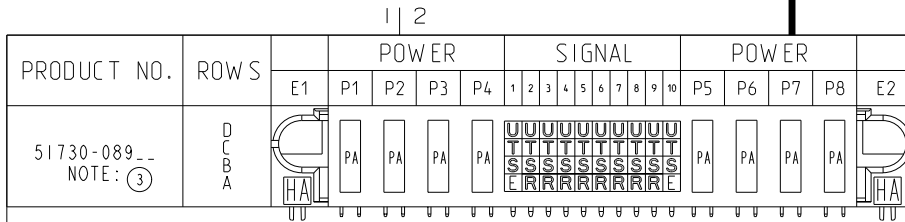


Tous droits strictement réservés. Reproduction ou communication a des tiers interdite sous quelque forme que ce soit sans autorisation écrite du propriétaire. Propriété de c FCI. Droits de reproduction FCI.

All rights strictly reserved. Reproduction or issue to third parties in any form whatever is not permitted without written authority from the proprietor. Property of FCI. Copyright FCI.



CODE	DIM "M" MATING LENGTH	CONTACT TYPE
E	.220 [5.59]	SIGNAL
R	.270 [6.86]	SIGNAL
S	.270 [6.86]	SIGNAL
T	.270 [6.86]	SIGNAL
U	.270 [6.86]	SIGNAL
PA	N/A [N/A]	POWER
HA	N/A [N/A]	HOLD-DOWN

mat'l code				SEE NOTE 2		tolerances unless otherwise specified		CUSTOMER	
ltr	ecn no.	dr	date	linear	.XX±.01/0.X±0.3	projection	COPY		
A	V04-0116	DAI	02/10/04		.XXX±.005/0.XX±0.13	⊕	title 4P + 40S + 4P		
B	V04-0333	TAB	04/06/04	angles	.XXX±.002/0.XX±0.051	←	RIGHT ANGLE SOLDER HEADER		
C	DG05-0488	CS	11/21/05		0°±2°	→	product family PwrBlade code 213		
				dr	D. INGRAM 02/10/04	←	size dwg no 51730-089		
				enr	M. GRAY 02/10/04	→	sheet 1 of 4		
				chr	M. GRAY 02/10/04	←	scale 1:1		
				appd	M. GRAY 02/10/04	→			
sheet index	revision sheet	C	C	C	C				
		1	2	3	4				

A FCI		www.fciconnect.com	
product family PwrBlade		code 213	
size dwg no 51730-089		sheet 1 of 4	
scale 1:1			

cage code 22526 4

Pro/E

PDM: Rev:C

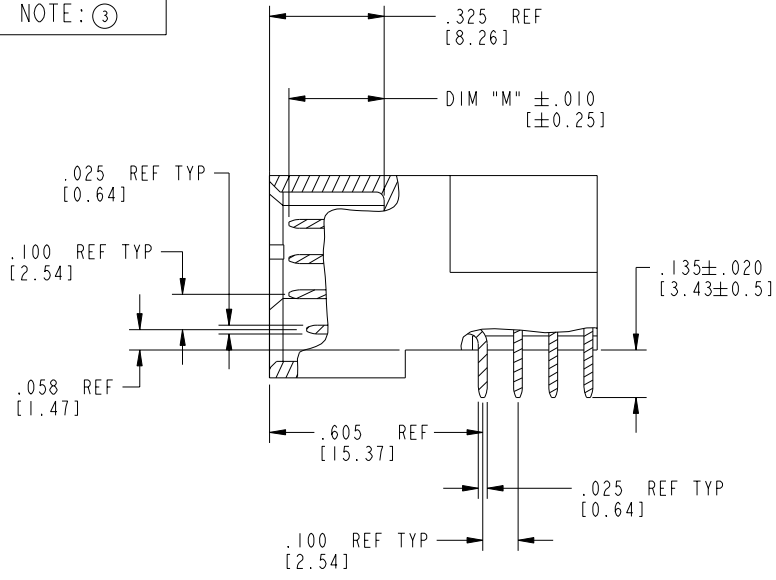
STATUS:Released

Printed: Dec 20, 2010

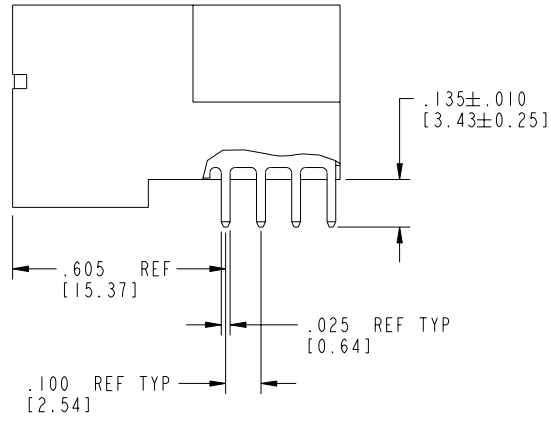
Tous droits strictement réservés. Reproduction ou communication à des tiers interdite sous quelque forme que ce soit sans autorisation écrite du propriétaire. Propriété de c FCI. Droits de reproduction FCI.

All rights strictly reserved. Reproduction or issue to third parties in any form whatever is not permitted without written authority from the proprietor. Property of FCI. Copyright FCI.

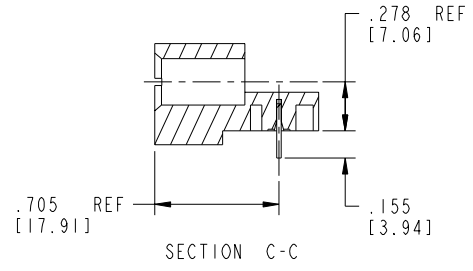
PRODUCT NUMBER
51730-089--
NOTE: (3)



BROKEN-OUT SECTION A-A
SCALE 2:1



BROKEN-OUT SECTION B-B
SCALE 2:1



SECTION C-C

mat'l code		SEE NOTE 2		tolerances unless otherwise specified		CUSTOMER		 www.fciconnect.com	
ltr	ecn no.	dr	date	linear	.XX±.01/0.X±0.3	COPY		projection	title
C				angles	.XXX±.005/0.XX±0.13				4P + 40S + 4P
				dr	.XXX±.0020/0.XXX±0.051				RIGHT ANGLE SOLDER HEADER
				enr	0°±2°				product family
				chr	D. INGRAM 02/10/04				PwrBlade
				appd	M. GRAY 02/10/04				code
					M. GRAY 02/10/04				213
sheet index	revision sheet							size	dwg no
								A	51730-089
									sheet
									2 of 4

cage code 22526

Pro/E

PDM: Rev:C

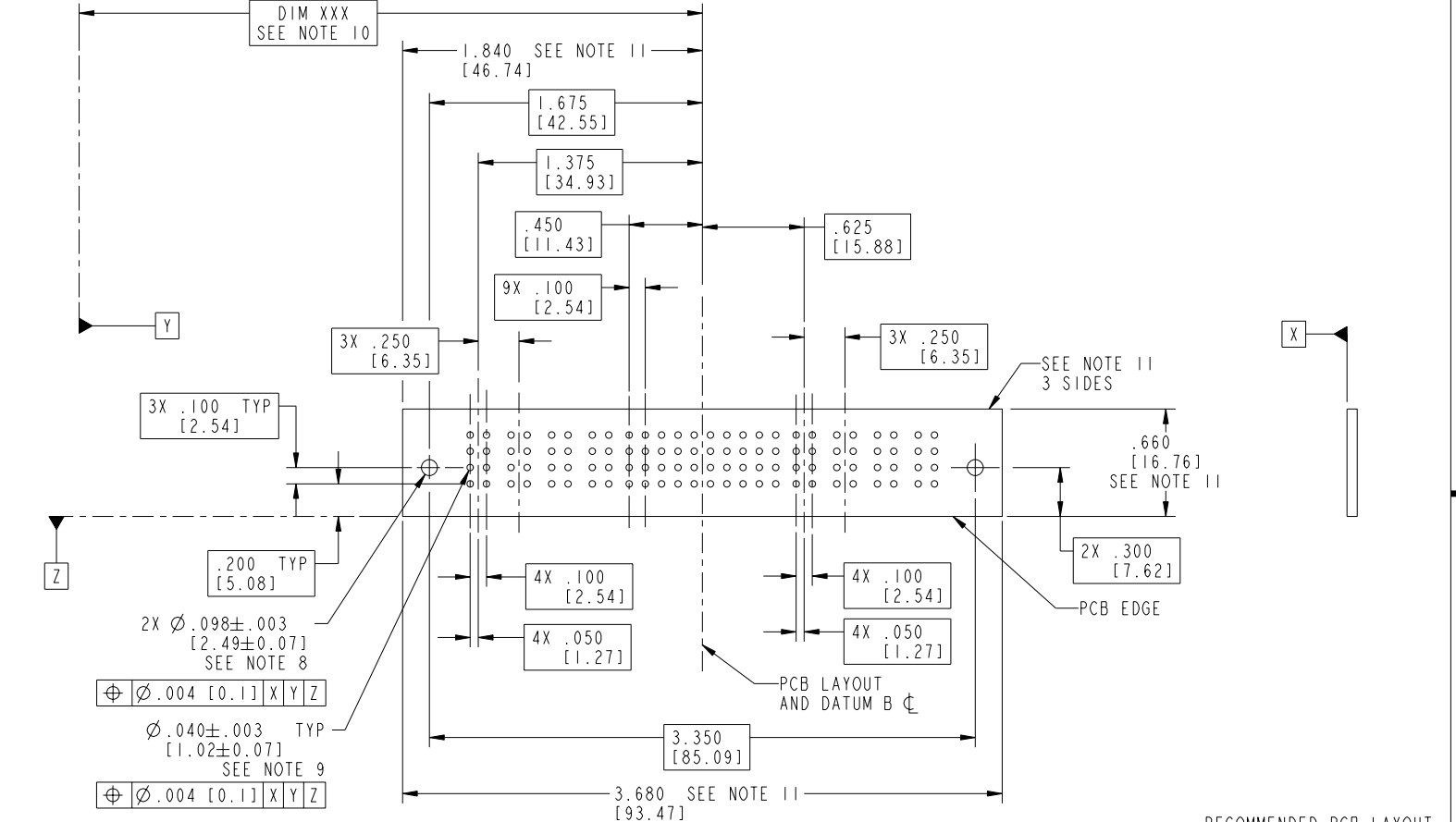
STATUS:Released

Printed: Dec 20, 2010

Tous droits strictement réservés. Reproduction ou communication à des tiers interdite sous quelque forme que ce soit sans autorisation écrite du propriétaire. Propriété de c FCI. Droits de reproduction FCI.

All rights strictly reserved. Reproduction or issue to third parties in any form whatever is not permitted without written authority from the proprietor. Property of FCI. Copyright FCI.

PRODUCT NUMBER
51730-089_--
NOTE: ③



RECOMMENDED PCB LAYOUT

mat'l code				SEE NOTE 2		tolerances unless otherwise specified		CUSTOMER		 www.fciconnect.com	
ltr	ecn no.	dr	date	linear	.XX±.01/0.X±0.3	COPY		projection		title 4P + 40S + 4P	
C				angles	.XXX±.005/0.XX±0.13					RIGHT ANGLE SOLDER HEADER	
				dr	.XXX±.0020/0.XXX±0.051					product family PwrBlade code 213	
				enr	0°±2°	D. INGRAM 02/10/04		size		dwg no 51730-089 sheet 3 of 4	
				chr		M. GRAY 02/10/04		scale 1:1			
				appd		M. GRAY 02/10/04					
sheet index	revision sheet										

cage code 22526

Pro/E

PDM: Rev:C

STATUS:Released

Printed: Dec 20, 2010

Tous droits strictement réservés. Reproduction ou communication à des tiers interdite sous quelque forme que ce soit sans autorisation écrite du propriétaire. Propriété de c FCI. Droits de reproduction FCI.

A
FCI

All rights strictly reserved. Reproduction or issue to third parties in any form whatever is not permitted without written authority from the proprietor. Property of FCI. Copyright FCI.

PRODUCT NUMBER
51730-089_-
NOTE: ③

NOTES:

1. DIMENSIONS AND TOLERANCES ARE IN ACCORDANCE WITH ASME Y14.5M, 1994 UNLESS OTHERWISE SPECIFIED.

2. CONNECTOR NOTES:

HOUSING MATERIAL: UL 94 V-0 GLASS FILLED HIGH-TEMP THERMOPLASTIC
POWER CONTACT MATERIAL: COPPER ALLOY
SIGNAL PIN MATERIAL: COPPER ALLOY

3. PLATING:

51730-089 Singal Pin: 30u"/0.76um Au OVER 50u"/1.27um Ni ON THE CONTACT AREA.
AND 100u"/2.54um SnPb PLATING OVER 50u"/1.27um Ni ON THE TERMINATION SECTION.
Power Pin: 30u"/0.76um Au OVER 50u"/1.27um Ni ON THE CONTACT AREA,
AND 100u"/2.54um SnPb PLATING OVER 50u"/1.27um Ni ON THE TERMINATION SECTION.

51730-089LF Singal Pin: 30u"/0.76um Au OVER 50u"/1.27um Ni ON THE CONTACT AREA.
AND 78u"/2.00um Sn PLATING OVER 50u"/1.27um Ni ON THE TERMINATION SECTION.
Power Pin: 30u"/0.76um Au OVER 50u"/1.27um Ni ON THE CONTACT AREA,
AND 78u"/2.00um Sn PLATING OVER 50u"/1.27um Ni ON THE TERMINATION SECTION.

PART NUMBER 51730-089LF MEETS EUROPEAN UNION DIRECTIVE AND OTHER COUNTRY REGULATIONS AS DESCRIBED IN GS-22-008.

THE HOUSING WILL WITHSTAND EXPOSURE TO 260° PEAK TEMPERATURE FOR 10 SECONDS IN A WAVE SOLDER APPLICATION WITH A CIRCUIT BOARD.

4. MANUFACTURER'S NAME, P/N, AND DATE CODE TO APPEAR ON THIS SURFACE.

5. PRODUCT SPECIFICATION GS-12-149.
APPLICATION SPECIFICATION BUS-20-067.

6. PACKAGED IN TRAYS.

PCB NOTES:

7. ALL HOLE DIAMETERS ARE FINISHED HOLE SIZE.

8. MOUNTING HOLES, WHERE APPLICABLE, ARE UNPLATED.

9. $\varnothing .0453 \pm .0010$ [1.151 ± 0.025] DRILLED HOLES PLATED WITH $.0003$ [0.008] MIN SnPb OVER $.001$ [0.03] TO $.003$ [0.08] Cu PLATING TO ACHIEVE $\varnothing .040 \pm .003$ [$1.02 \pm .07$] HOLE.

10. "DIM XXX" TO BE DETERMINED BY THE CUSTOMER.

11. CONNECTOR KEEP-OUT ZONE.

mat'l code		SEE NOTE 2		tolerances unless otherwise specified		CUSTOMER		A FCI www.fciconnect.com	
ltr	ecr no.	dr	date	linear	.XX±.01/0.X±0.3	COPY		projection	title
C					.XXX±.005/0.XX±0.13				4P + 40S + 4P
				angles	XXXX±.0020/0.XXX±0.051				RIGHT ANGLE SOLDER HEADER
				dr	0° ± 2°				product family
				enr	D. INGRAM 02/10/04				PwrBlade
				chr	M. GRAY 02/10/04	scale		size	code
				appd	M. GRAY 02/10/04	1:1		dwg no	213
sheet index	revision sheet							A	51730-089
									4 of 4

cage code 22526 4

PDM: Rev:C

STATUS: Released

Printed: Dec 20, 2010