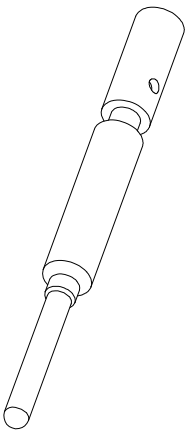
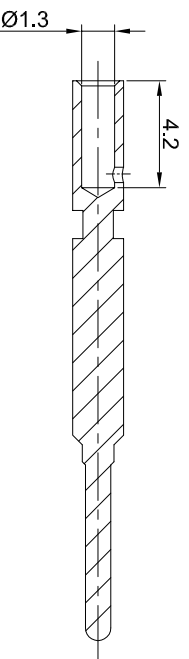
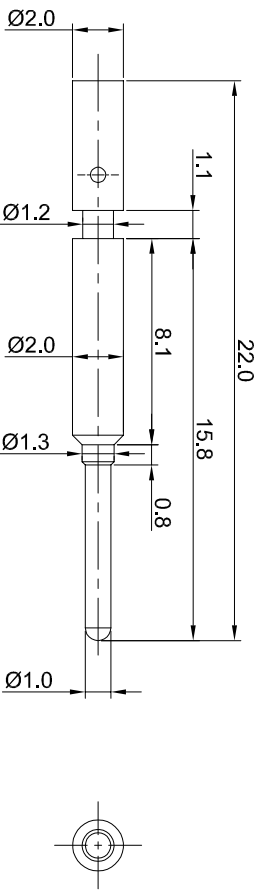


REVISIONS				
REV	ECO	DESCRIPTION	DATE	BY APPR
A1	-	RELEASED DRAWING	Jun.05.2018	White TOMMY



- NOTES: UNLESS OTHERWISE SPECIFIED
1. MATERIAL: COPPER ALLOY, GOLD PLATED
 2. SPECIFICATIONS:
 - 2.1 RATED CURRENT: 10 AMPS
 - 2.2 CONTACT RESISTANCE: <5 milliohm
 - 2.3 AVAILABLE WIRE RANGE: 18AWG~22AWG
 - 2.4 ROHS COMPLIANT
 3. ALL DIMENSIONS ARE FOR REFERENCE USE ONLY.

QUANTITY	SEE PART NUMBER CHART	PART NUMBER	DESCRIPTION	ITEM
MATERIALS LIST				
UNLESS OTHERWISE SPECIFIED		SIGNATURES		
1) All dimensions are in millimeters.		DRAWN: White	DATE: Jun.05.2018	
2) Tolerances are as follows:		CHECKED: Tod	DATE: Jun.05.2018	
3) Note reference =		APPROVAL: Tommy	DATE: Jun.05.2018	
MATERIAL SPECIFICATIONS:		CUSTOMER:		
PROCESS SPECIFICATIONS:		THIS DRAWING IS SUPPLIED FOR INFORMATION ONLY. DESIGN FEATURES, SPECIFICATIONS AND PERFORMANCE DATA ARE THE PROPERTY OF AMPHENOL CORPORATION. NO RIGHTS OR PERMISSIONS ARE GRANTED FOR REPRODUCTION OR TRANSMISSION IN ANY FORM OR BY ANY MEANS, ELECTRONIC OR MECHANICAL, INCLUDING PHOTOCOPYING, RECORDING, OR BY ANY INFORMATION STORAGE AND RETRIEVAL SYSTEMS. DIMENSIONS ARE SUBJECT TO USUAL MANUFACTURING VARIATIONS.		
NEXT ASSTY:		SCALE: NONE		

TITLE: Pin contact, 1.0mm, Chimp 18-22AWG		DWG NO: SC000465	REV: A1	SH: 1	OF: 1
Pin contact: 1.0mm, Chimp 18-22AWG		Amphenol		SHEET 1 OF 1	
Sine Systems - www.amphenol-sine.com		44724 Morley Drive		Clinton Township, MI 48036	
SIZE: B	TYPE: C-	DWG NO: SC000465	REVISION: A1		