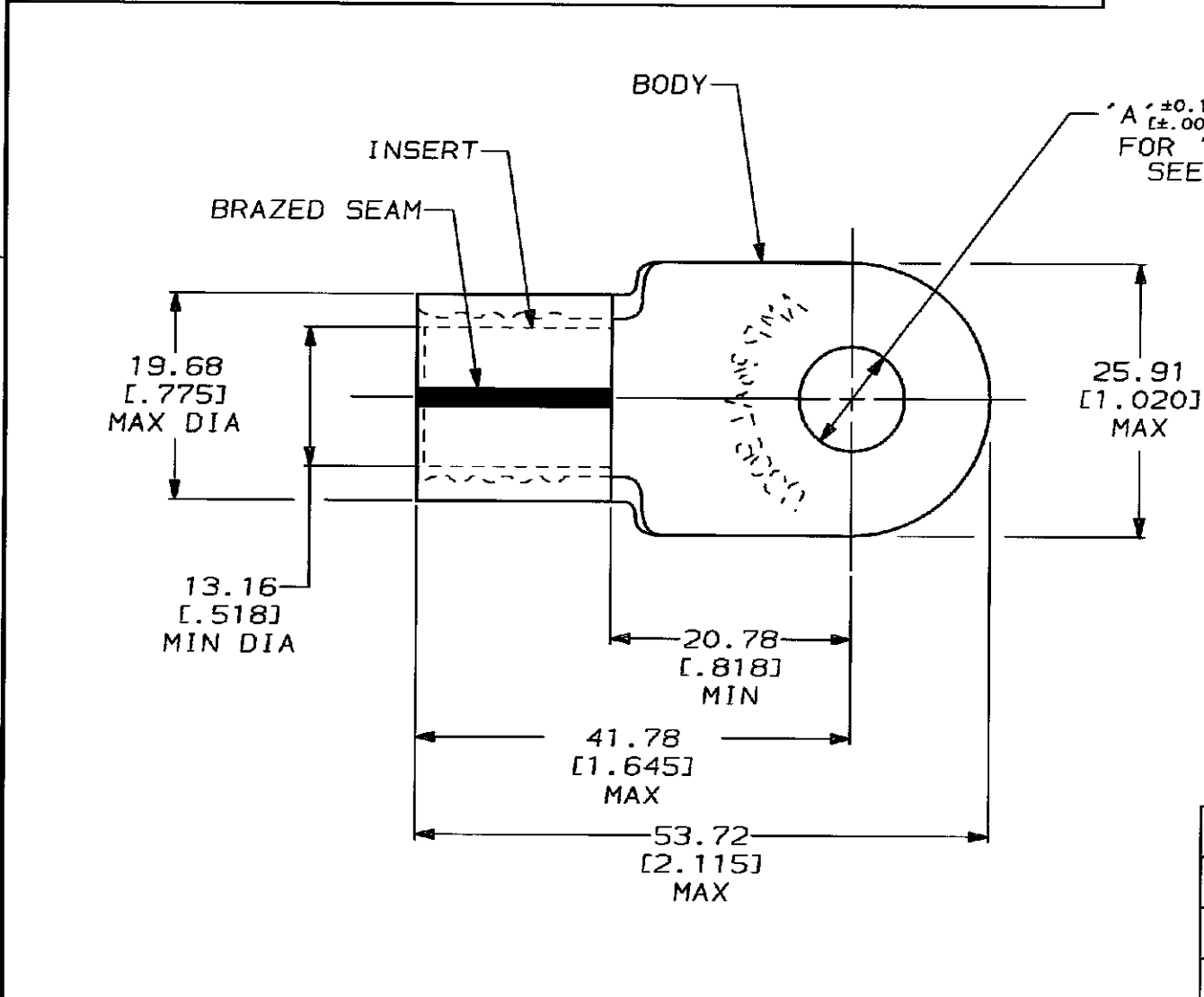


THIS DRAWING IS UNPUBLISHED. RELEASED FOR PUBLICATION, 19 .
 © COPYRIGHT 19 BY AMP INCORPORATED. ALL INTERNATIONAL RIGHTS RESERVED.

LOC	DIST	P	F	ZONE	LTR	DESCRIPTION	DATE	APPD
G	86				H	REVISED & REDRAWN PER 0720-0100-93	8/3/93	AJK



SIZE	FINISH	MATERIAL & FINISH	PART NO
.515	1/2	BODY: COPPER PER ASTM B-152 TIN PL 0.00254 [.000100] MIN THK PER MIL-T-10727	51992-3
.453	7/16		51992-2
.390	3/8	INSERT: BRASS PER MIL-C-50 TIN PL 0.00076 [.000030] MIN EXT THK PER MIL-T-10727	51992-1
.328	5/16		51992
'A'	'B'		

AMP INCORPORATED CUSTOMER SERVICE SYSTEMS		MAX RECOMMENDED OPERATING TEMPERATURE: 170°C MAX	DO NOT SCALE PRINT. UNLESS SPECIFIED DIMENSIONS IN MILS ENGLISH TOLERANCES ON: 2 PLC DEC ± 0.20 (.008) 3 PLC DEC ± - ANGLES ± -	DR 8/3/93 DK SCHRUM	AMP AMP Incorporated Harrisburg, PA 17105-3608
FOR ADDITIONAL PRODUCT INFORMATION OR COPIES OF DRAWINGS AND TECHNICAL DOCUMENTS	PRODUCT INFORMATION CENTER 1-800-522-6752	VOLTAGE RATING: NOT APPLICABLE		CHK 8/9/93 AJ KAUFMAN	
FOR APPLICATION TOOLING INFORMATION	TOOLING ASSISTANCE CENTER 1-800-722-1111	CIRCULAR MIL AREA: 76.3-96.3mm² [150,500-190,000] CIR MILS SOLID OR STRANDED	MATERIAL SEE TABLE	APPD 8/3/93 RE ROSER	SIZE B
FOR ORDER ENTRY	1-800-526-5142	THIS DRAWING IS A CONTROLLED DOCUMENT FOR AMP INCORPORATED. IT IS SUBJECT TO CHANGE AND THE CONTROLLING ENGINEERING ORGANIZATION SHOULD BE CONTACTED FOR THE LATEST REVISION.	FINISH SEE TABLE	APPD 8/3/93 JL HECKLEY	CASE CODE 00779
				PRODUCT SPEC -	DRAWING NO ©-51992
				APPLICATION SPEC -	SCALE 2:1
				WEIGHT -	SHEET 1 OF 1