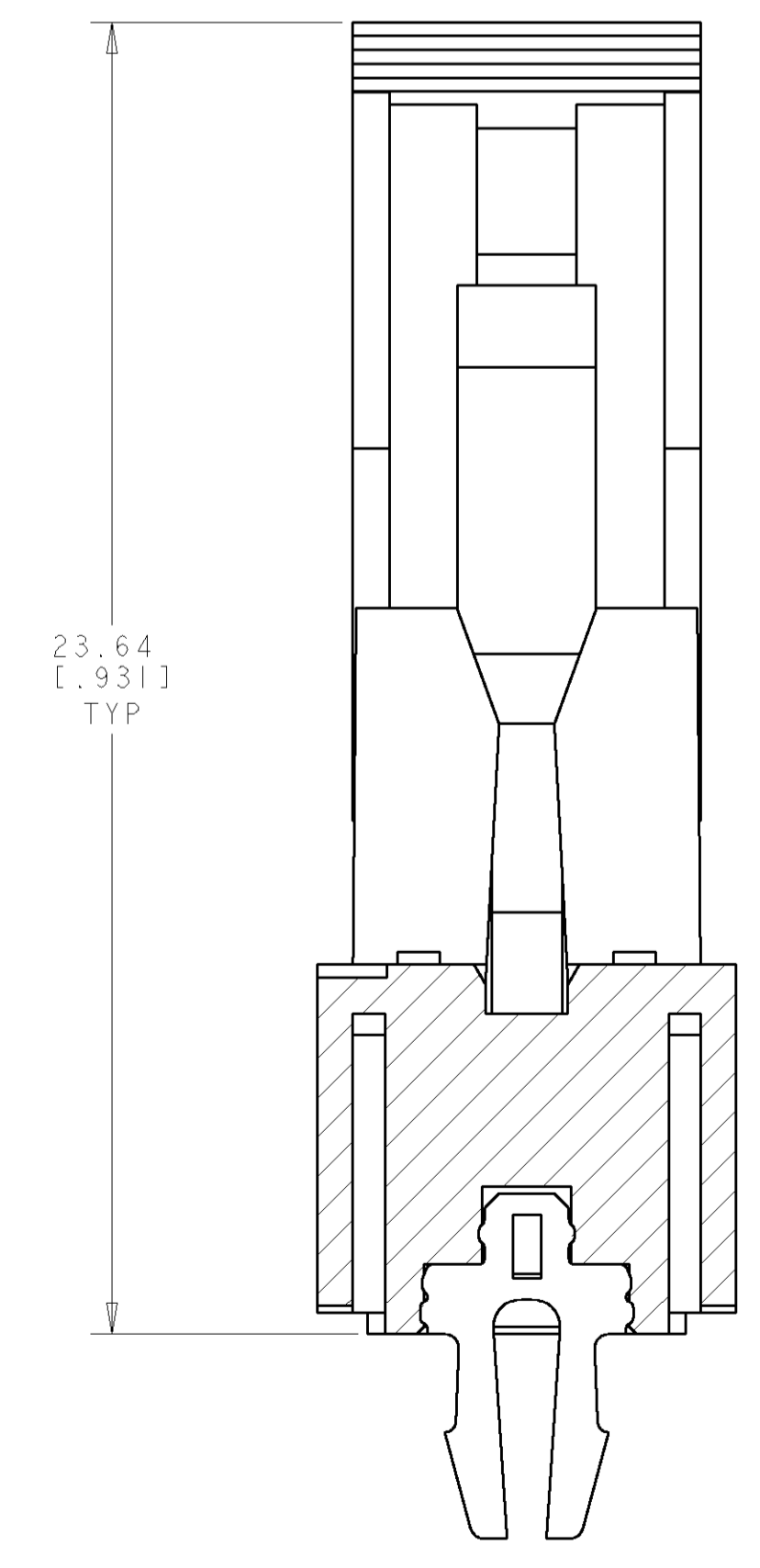
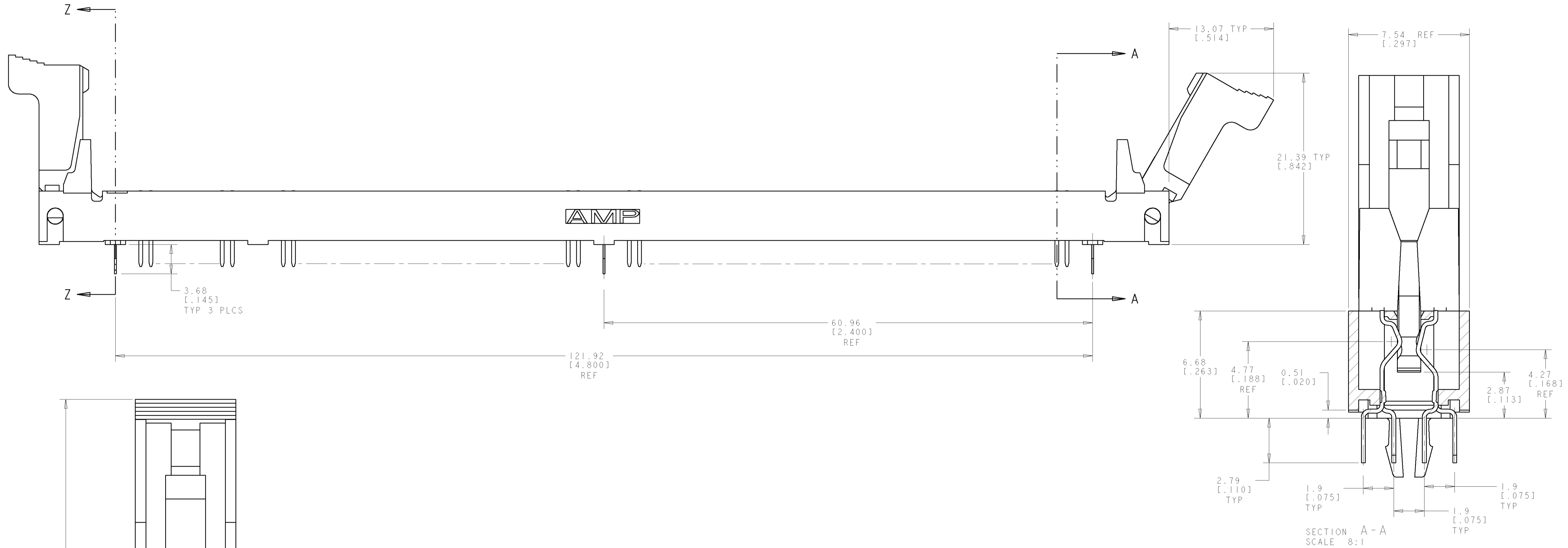
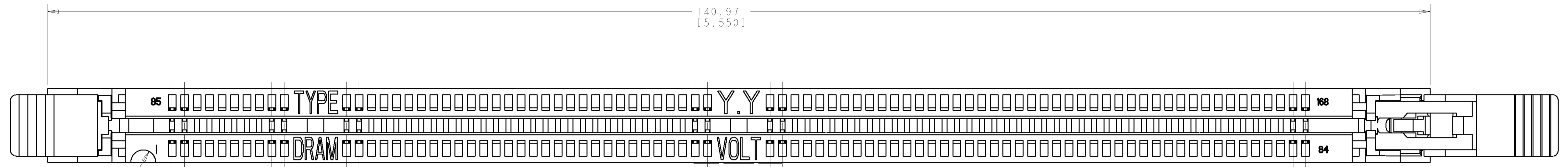


LOC	DIST	REV	DESCRIPTION	DATE	DWN	APPD
GP	0					
H			ADDED: 3/6 AND 4/6 PER OS1D-0146-00	23JAN02	DD	DS
J			ADDED: 5/6 PER OS1D-0006-01	15FEB02	JB	DS
K			REVISED PER OS1D-0027-01	20FEB02	JB	DS
L			ADDED: 6/6 PER OS11-0029-01	04MAR02	JB	DS



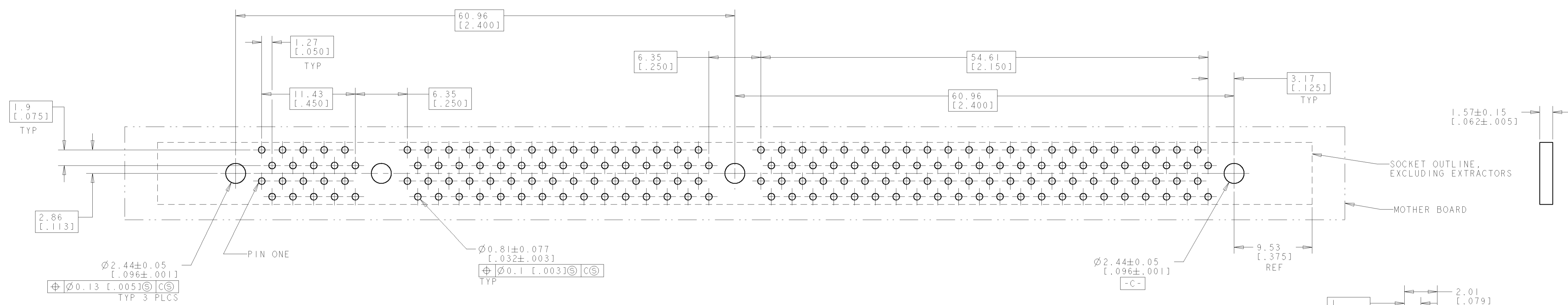
SECTION Z-Z
SCALE 8:1

KEY #1	KEY #2	PART DESCRIPTION	PART NUMBER
DETAIL C	DETAIL A	NON-BUFFERED DRAM, 3.3 VOLT	6-390074-6
DETAIL C	DETAIL A	NON-BUFFERED DRAM, 3.3 VOLT	5-390074-6
DETAIL C	DETAIL A	NON-BUFFERED DRAM, 3.3 VOLT	4-390074-6
DETAIL C	DETAIL A	NON-BUFFERED DRAM, 3.3 VOLT	3-390074-6
DETAIL C	DETAIL A	NON-BUFFERED DRAM, 3.3 VOLT	2-390074-6
DETAIL C	DETAIL A	NON-BUFFERED DRAM, 3.3 VOLT	1-390074-6
DETAIL A	DETAIL A	STD DRAM, 3.3 VOLT	1-390074-4
DETAIL C	DETAIL A	NON-BUFFERED DRAM, 3.3 VOLT	390074-6
DETAIL B	DETAIL A	SYNC DRAM, 3.3 VOLT	390074-5
DETAIL A	DETAIL A	STD DRAM, 3.3 VOLT	390074-4
DETAIL A	DETAIL B	STD DRAM, 5 VOLT	390074-1

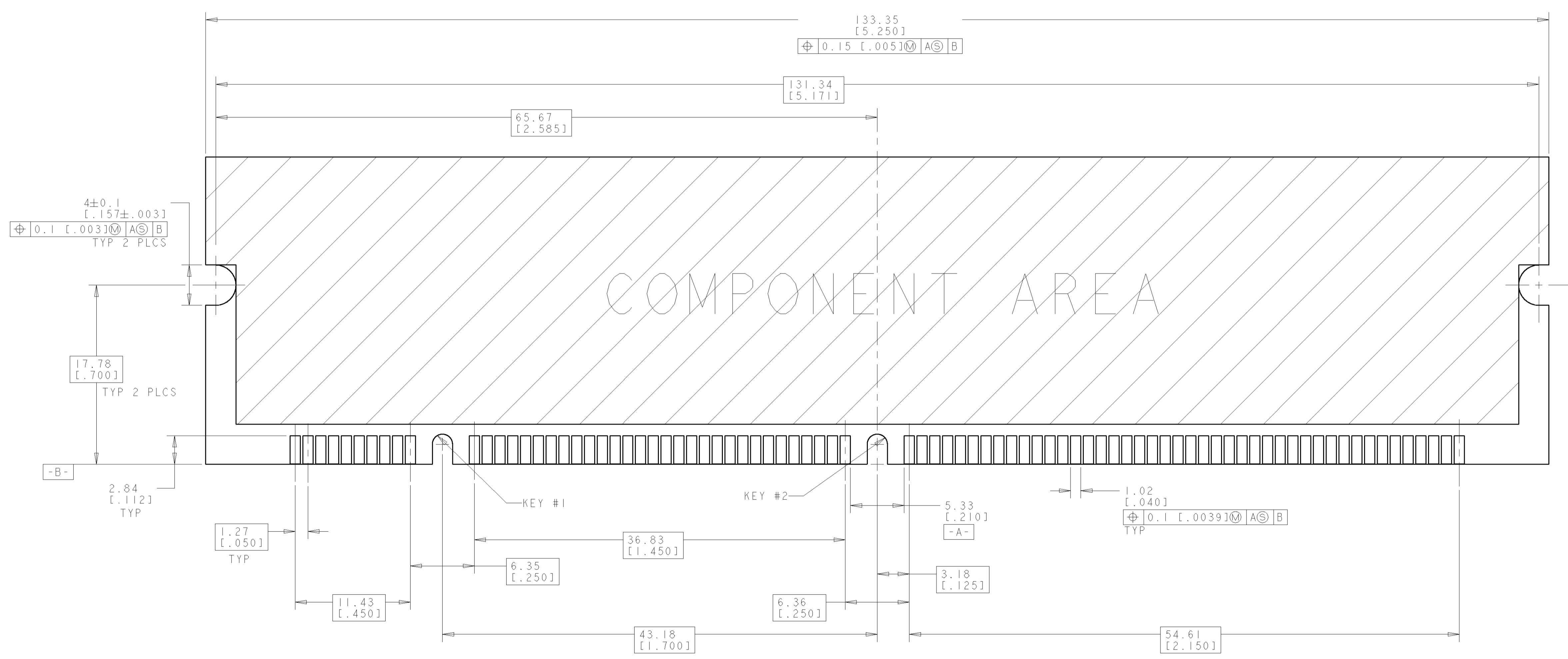
- 1 FOR OPTIMUM PERFORMANCE, CONTACT PAD PLATING SHOULD BE SMOOTH AND FLAT. COPPER CONTACT PADS ARE TO BE OVERPLATED WITH 0.00127 [0.00050] MIN THK NICKEL FOLLOWED WITH 0.00102 [0.00040] MIN THK GOLD PLATING.
- 2 CONTACT MATING AREA: 0.00076 [0.00030] MIN THICK GOLD OVER 0.00381 [0.000150] NICKEL OR GOLD FLASH OVER 0.00051 [0.00020] MIN THICK 80/20 PALLADIUM-NICKEL. MIN THICK. SOLDER TAILS: 0.00381 [0.000150] MIN THICK TIN-LEAD UNDERPLATE: 0.00127 [0.00050] MIN THICK NICKEL OVER ENTIRE CONTACT.
- 3 MATERIAL: HOUSING AND EXTRACTORS: GLASS FILLED, HIGH TEMPERATURE NYLON. CONTACTS: PHOS BRONZE
- 4 PART NUMBER 1-390074-4 AND 1-390074-6 PACKAGED IN TUBES.
- 5 EXTRACTOR MATERIAL: GLASS-FILLED, HIGH TEMPERATURE NYLON, COLOR-GRAY.
- 6 EXTRACTOR TO BE INSERTED IN PIN 1 END.
- 7 EXTRACTOR TO BE INSERTED IN PIN 84 END.
- 8 SEE SHEET 3 FOR DETAILS.
- 9 USE ONLY GOLD PLATE OPTION FOR THIS DASH NUMBER.

<small>THIS DRAWING IS A CONTROLLED DOCUMENT FOR AMP INCORPORATED. ALL CHANGES TO THIS DRAWING MUST BE CONTROLLED BY THE ORGANIZATION THAT ISSUED THIS DRAWING. FOR THE LATEST REVISION.</small>		DWN: W. SORAH 21-AUG-96 ENR: R. TALLEY 21-AUG-96 APPD: P. SMITH 21-AUG-96	AMP AMP Incorporated Harrisburg, PA 17105-3608
DIMENSIONS: mm [INCHES]	TOLERANCES UNLESS OTHERWISE SPECIFIED: 0 PLC ± 1 PLC ±0.13 [0.005] 2 PLC ± 3 PLC ± 4 PLC ± 5 PLC ±	NAME: SOCKET ASSY, DUAL READ-OUT, VERSION II, 17.78 [0.700], LOCKING EXTRACTORS, 168 POSITION PRODUCT SPEC: APPLICATION SPEC: SIZE: A1 CAGE CODE: 00779 DRAWING NO: C-390074	SCALE: 4:1 SHEET 1 OF 3 REV
MATERIAL: 3 FINISH: 1, 2		WEIGHT: - CUSTOMER DRAWING	

LOC	DIST	REV	DATE	APPD	REVISED
GP	0				
		1			SEE SHEET 1

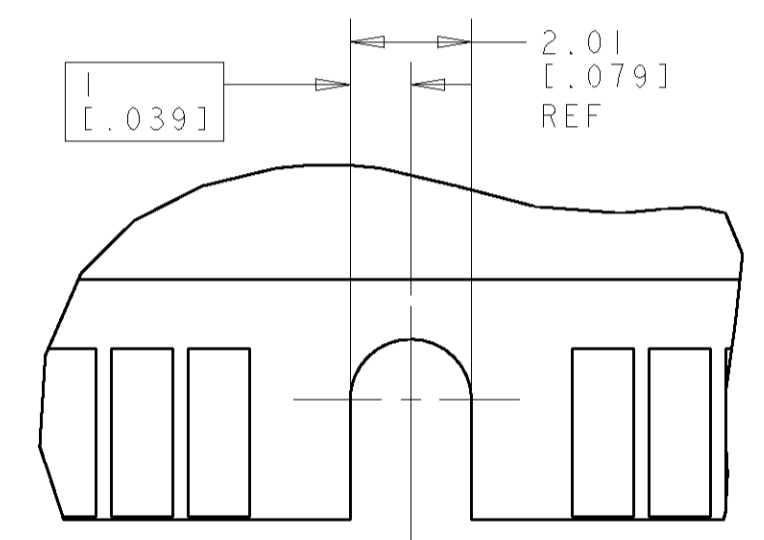


RECOMMENDED CIRCUIT BOARD HOLE LAYOUT

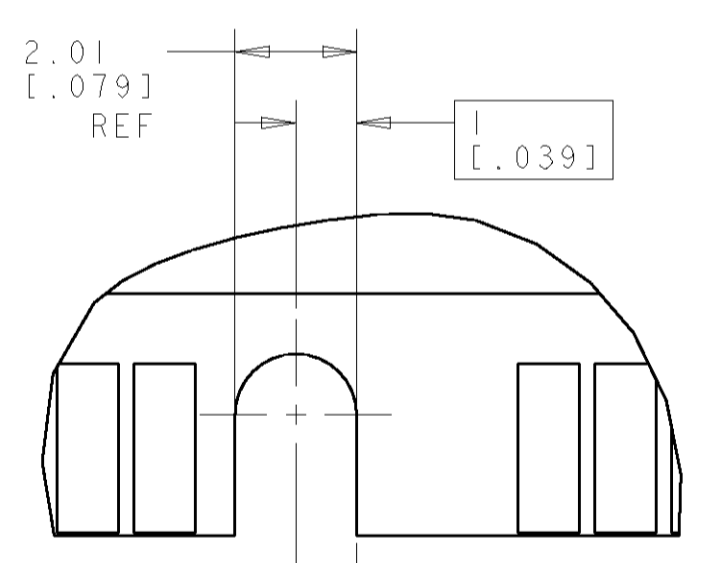


RECOMMENDED MODULE LAYOUT

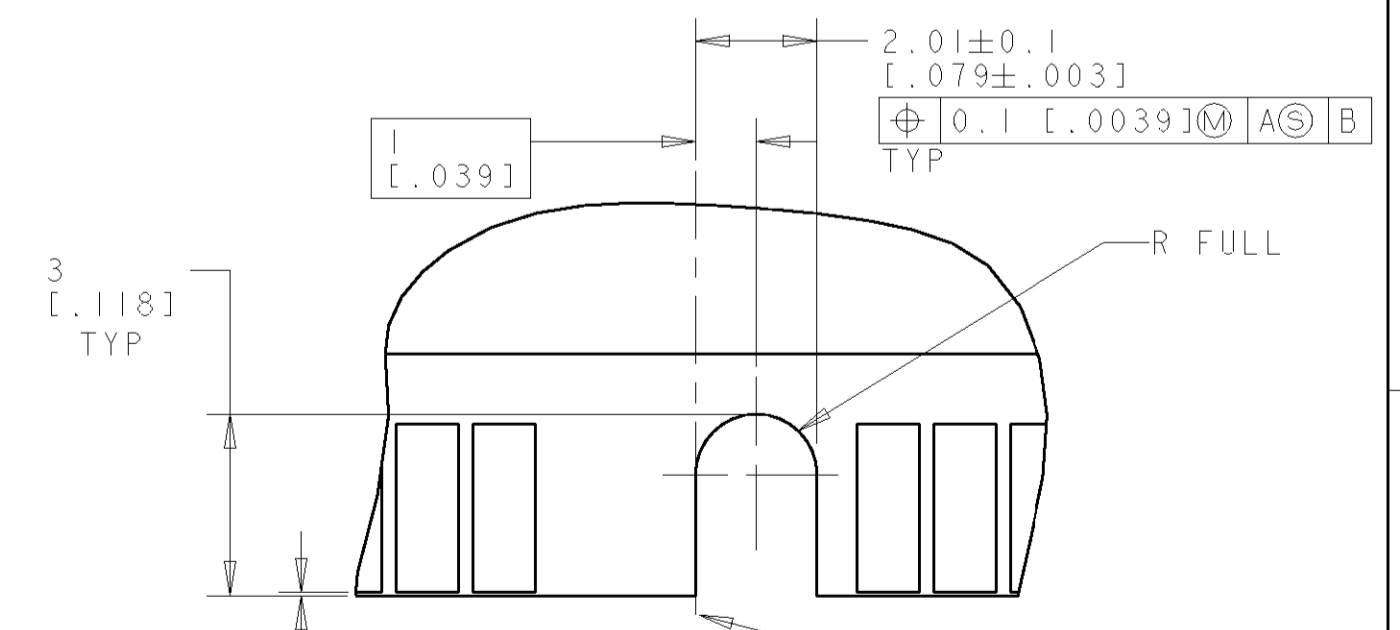
SEE JEDEC SPEC. MO-161 FOR COMPLETE MODULE DETAILS
 1.27±0.10(.050±.004) THICK ACROSS CONTACT PADS



DETAIL A
SCALE 8:1



DETAIL B
SCALE 8:1

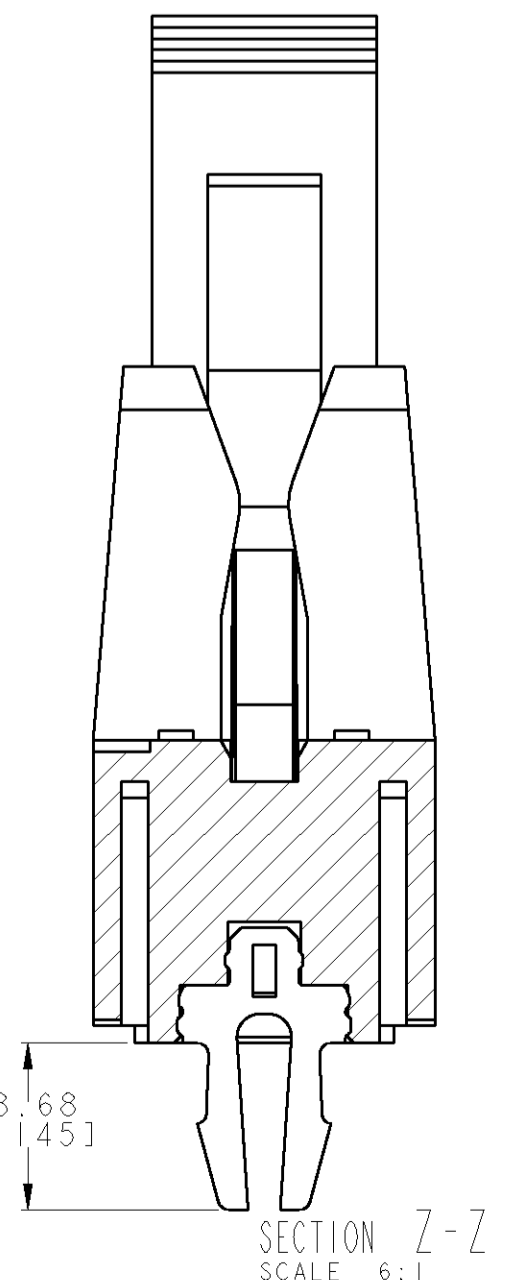
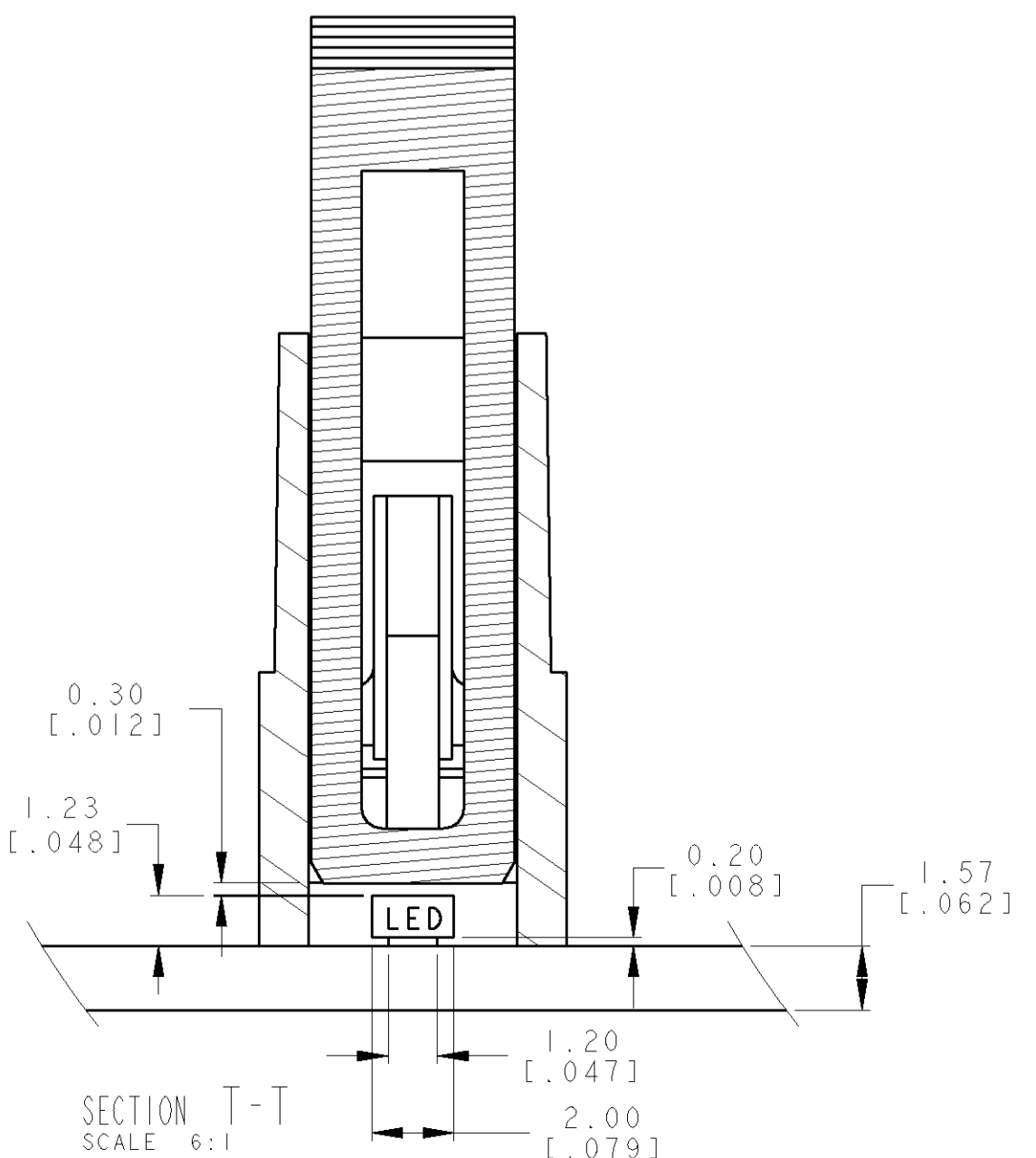
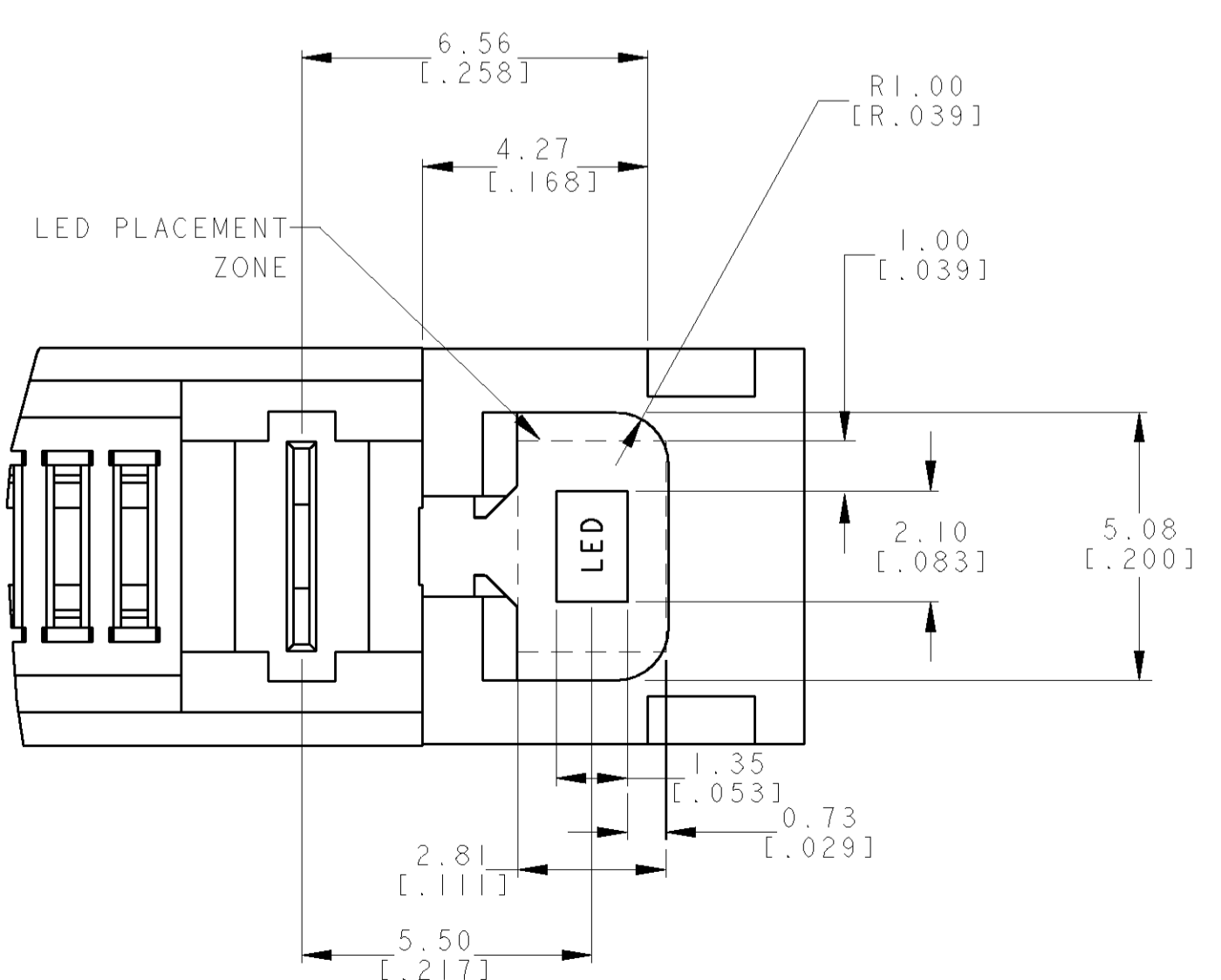
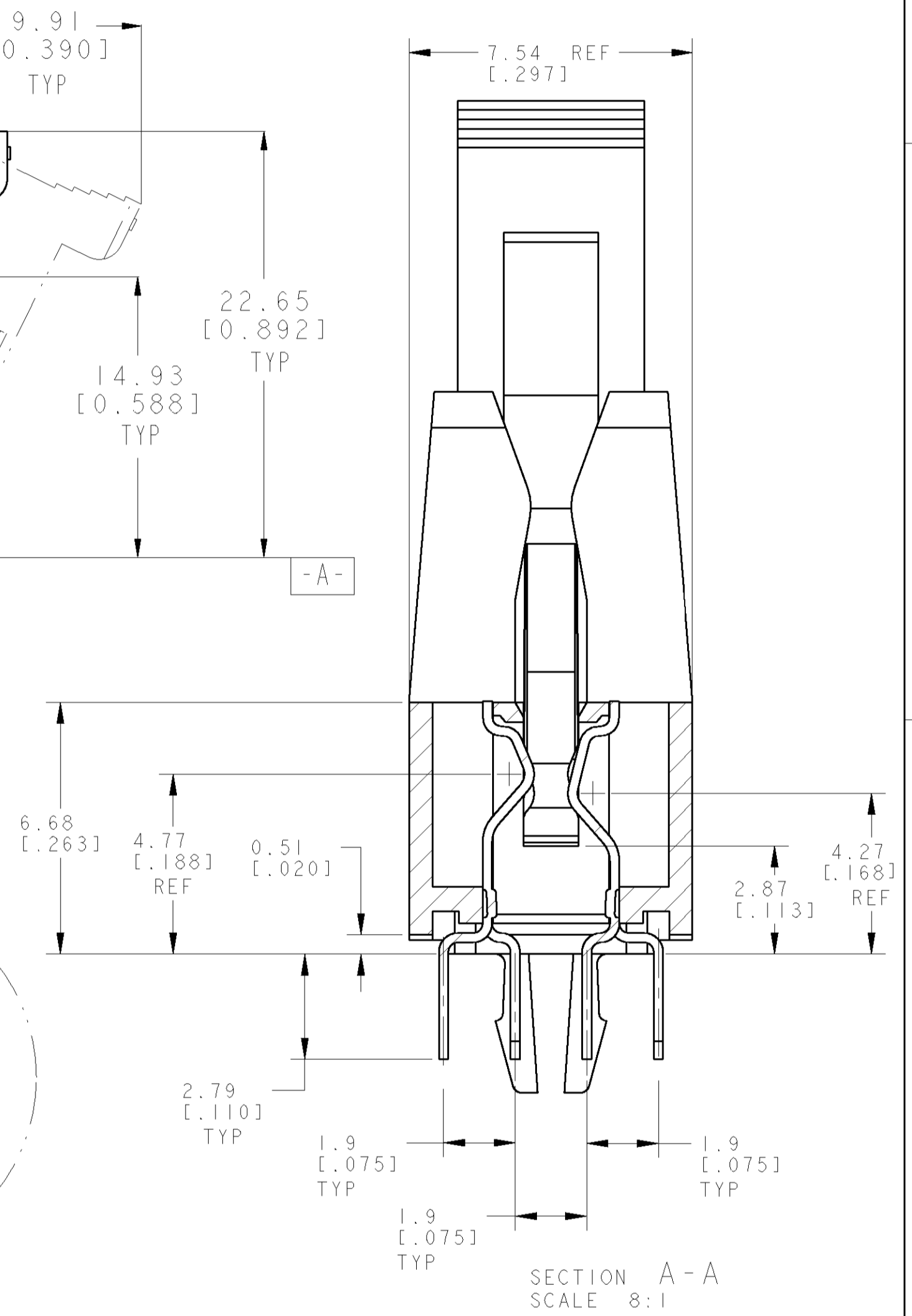
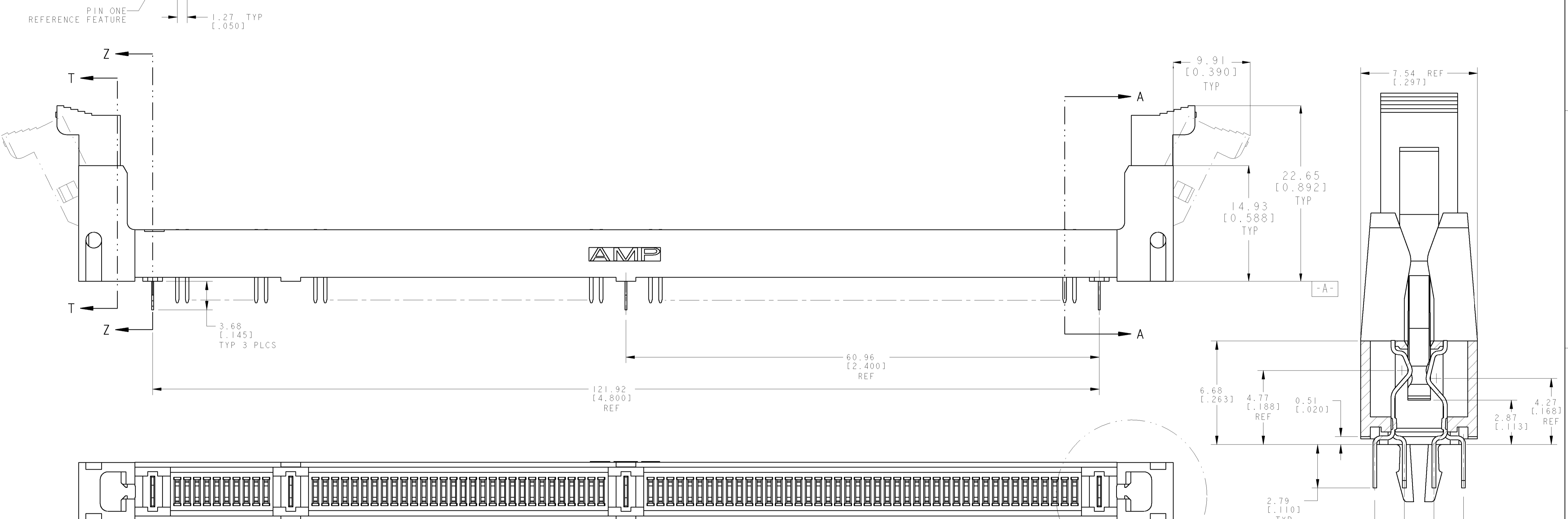
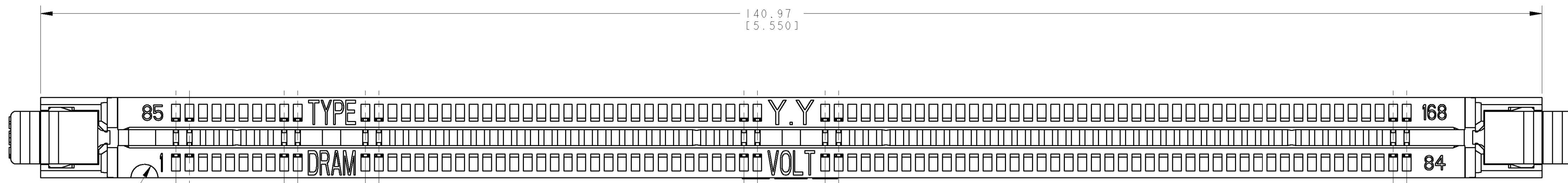


DETAIL C
SCALE 8:1

<small>THIS DRAWING IS A CONTROLLED DOCUMENT FOR AMP INCORPORATED. ALL CHANGES TO THIS DRAWING MUST BE APPROVED BY THE CONTROLLING ENGINEERING ORGANIZATION. SHOULD BE CONTACTED FOR THE LATEST REVISION.</small>		DWN: W. SORAH 21-AUG-96 ENR: R. TALLEY 21-AUG-96 APPD: P. SMITH 21-AUG-96	AMP Incorporated Harrisburg, PA 17105-3608
DIMENSIONS: mm [INCHES]	TOLERANCES UNLESS OTHERWISE SPECIFIED: 0 PLC ± 1 PLC ± 2 PLC ±0.13 [0.005] 3 PLC ± 4 PLC ± ANGLES ±	NAME: SOCKET ASSY, DUAL READ-OUT, VERSION II, 17.78 [0.700], LOCKING EXTRACTORS, 168 POSITION PRODUCT SPEC: APPLICATION SPEC: CAGE CODE: DRAWING NO: A1 00779 C=390074	WEIGHT: CUSTOMER DRAWING
MATERIAL: SEE SH 1	FINISH: -	SCALE: 4:1	SHEET 2 OF 3 REV 1

LOC	DIST	REV	DATE	BY	APPD
GP	0				

REVISIONS			
NO.	DESCRIPTION	DATE	BY
1	SEE SHEET 1		



SEE DETAIL D

- 1 FOR OPTIMUM PERFORMANCE, CONTACT PAD PLATING SHOULD BE SMOOTH AND FLAT. COPPER CONTACT PADS ARE TO BE OVERPLATED WITH 0.00127 [0.00050] MIN THK NICKEL FOLLOWED WITH 0.00102 [0.00040] MIN THK GOLD PLATING.
- 2 CONTACT MATING AREA: 0.000762 [0.00030] MIN GOLD. SOLDER TAILS: 0.00381 [0.00150] MIN THK TIN-LEAD UNDERPLATE: 0.00127 [0.00050] MIN THK NICKEL OVER ENTIRE CONTACT.
- 3 MATERIAL: HOUSING AND EXTRACTORS: GLASS FILLED, HIGH TEMPERATURE NYLON. CONTACTS: PHOS BRONZE
- 4 EXTRACTOR MATERIAL: POLYSULFONE THERMOPLASTIC. COLOR: NATURAL AMBER

5-390074-6 SHOWN

KEY #1	KEY #2	PART DESCRIPTION	PART NUMBER
DETAIL C	DETAIL A	NON-BUFFERED DRAM, 3.3 VOLT	5-390074-6

<small>THIS DRAWING IS A CONTROLLED DOCUMENT FOR AMP INCORPORATED. ALL CHANGES TO THIS DRAWING ARE THE PROPERTY OF AMP INCORPORATED. REVISIONS SHOULD BE CONTACTED FOR THE LATEST REVISION.</small>		DWN: W. SORAH 21-AUG-96 ENR: R. TALLEY 21-AUG-96 APPD: P. SMITH 21-AUG-96	AMP AMP Incorporated Harrisburg, PA 17105-3608
DIMENSIONS: 0 PLC ± 1 PLC ± 2 PLC ±0.13 [0.005] 3 PLC ± 4 PLC ± ANGLES ±1° FINISH	TOLERANCES UNLESS OTHERWISE SPECIFIED: ±0.13 [0.005]	NAME: SOCKET ASSY, DUAL READ-OUT, VERSION II, 17.78 [0.700], LOCKING EXTRACTORS, 168 POSITION PRODUCT SPEC APPLICATION SPEC WEIGHT CUSTOMER DRAWING	SIZE: A1 CAGE CODE: 00779 DRAWING NO: C=390074 SCALE: 4:1 SHEET 3 OF 3 REV