

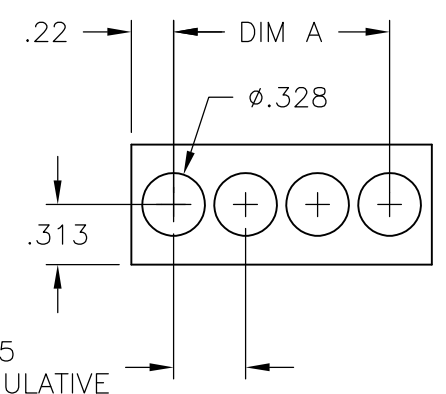
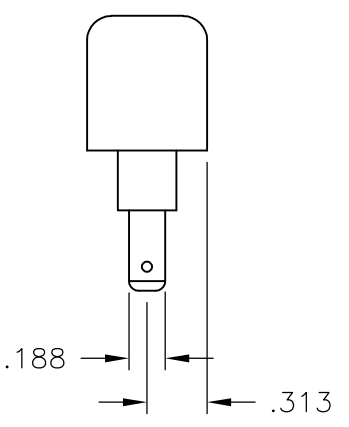
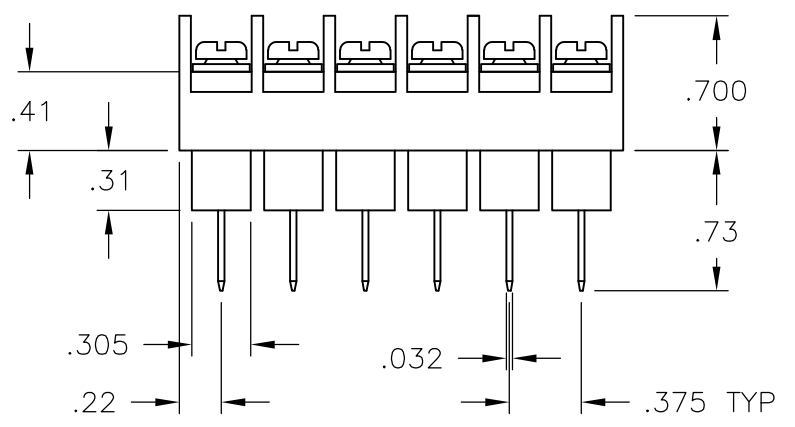
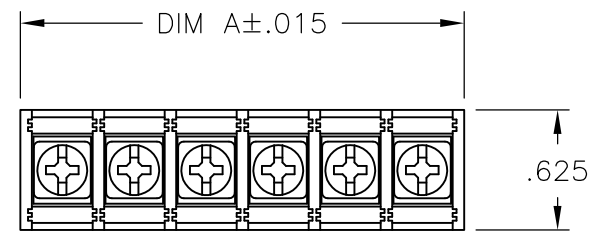
THIS DRAWING IS UNPUBLISHED. RELEASED FOR PUBLICATION  
 © COPYRIGHT - By - ALL RIGHTS RESERVED.

LOC		DIST		REVISIONS						
P	LTR	DESCRIPTION			DATE	DWN	APVD			
			0	C2	UPDATING STATUS OF 2-1776584-6 FROM PRELIMINARY TO ACTIVE			03DEC2015	FP	PS

PHYSICAL PROPERTIES:  
 HOUSING: THERMOPLASTIC, UL94V-0, BLACK.  
 SCREWS: #6-32 STEEL, ZINC PLATING W/ CLEAR CHROMATE.  
 PITCH (TERMINAL SPACING): .375"  
 OPERATING TEMP.: 105° C MAX  
 ELECTRICAL PROPERTIES:  
 RATED CURRENT: 20A  
 OPERATING VOLTAGE: 300V  
 WIRE RANGE: 12-22 AWG

1 SEE FIGURE.

2 OBSOLETE PARTS: OBSOLETE CIS STREAMLINING PER D.RENAUD/D.SINISI



MOUNTING PANEL LAYOUT

DIM A	NO OF POS	CATALOG NUMBER	PART NUMBER
9.436	25	JC6-F408-25	<del>2-1776584-5</del>
9.061	24	JC6-F408-24-256	2-1776584-6
9.061	24	JC6-F408-24	2-1776584-4
8.686	23	JC6-F408-23	<del>2-1776584-3</del>
8.311	22	JC6-F408-22	<del>2-1776584-2</del>
7.936	21	JC6-F408-21	<del>2-1776584-1</del>
7.561	20	JC6-F408-20	<del>2-1776584-0</del>
7.186	19	JC6-F408-19	<del>1-1776584-9</del>
6.811	18	JC6-F408-18	<del>1-1776584-8</del>
6.436	17	JC6-F408-17	<del>1-1776584-7</del>
6.061	16	JC6-F408-16	<del>1-1776584-6</del>
5.686	15	JC6-F408-15	<del>1-1776584-5</del>
5.311	14	JC6-F408-14	<del>1-1776584-4</del>
4.936	13	JC6-F408-13	<del>1-1776584-3</del>
4.561	12	JC6-F408-12	<del>1-1776584-2</del>
4.186	11	JC6-F408-11	<del>1-1776584-1</del>
3.811	10	JC6-F408-10	<del>1-1776584-0</del>
3.436	9	JC6-F408-09	<del>1776584-9</del>
3.061	8	JC6-F408-08	1776584-8
2.686	7	JC6-F408-07	<del>1776584-7</del>
2.311	6	JC6-F408-06	1776584-6
1.936	5	JC6-F408-05	<del>1776584-5</del>
1.561	4	JC6-F408-04	<del>1776584-4</del>
1.186	3	JC6-F408-03	<del>1776584-3</del>
.811	2	JC6-F408-02	<del>1776584-2</del>

THIS DRAWING IS A CONTROLLED DOCUMENT.		DWN	S SCHLEGEL	8/2/05	TE Connectivity			
DIMENSIONS: INCHES		CHK	S YODER	8/2/05				
TOLERANCES UNLESS OTHERWISE SPECIFIED:		APVD	S YODER	8/2/05	JC6-F408-XX ASSEMBLY			
0 PLC ± - 1 PLC ± - 2 PLC ± .02 3 PLC ± .010 4 PLC ± - ANGLES ± -		PRODUCT SPEC			SIZE	CAGE CODE	DRAWING NO	RESTRICTED TO
MATERIAL		FINISH			A3 00779 C-1776584			-
CUSTOMER DRAWING					SCALE	1:1	SHEET	1 OF 2
					REV C2			

4

3

2

1

THIS DRAWING IS UNPUBLISHED.

RELEASED FOR PUBLICATION

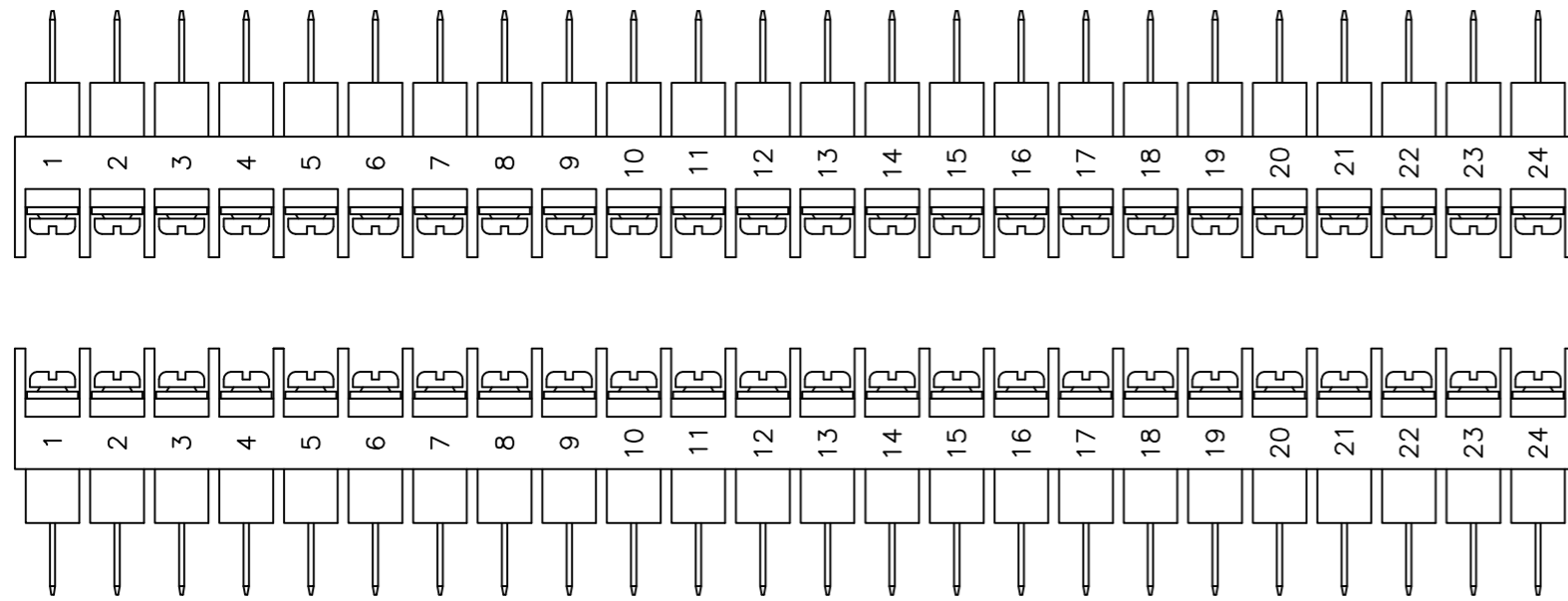
© COPYRIGHT - By -

ALL RIGHTS RESERVED.

LOC 0 DIST 0

REVISIONS

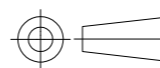
P	LTR	DESCRIPTION	DATE	DWN	APVD
-	-	SEE SHEET 1	-	-	-



2-1776584-6

THIS DRAWING IS A CONTROLLED DOCUMENT.

DIMENSIONS:  
INCHES



TOLERANCES UNLESS OTHERWISE SPECIFIED:

- 0 PLC ± -
- 1 PLC ± -
- 2 PLC ± .02
- 3 PLC ± .010
- 4 PLC ± -
- ANGLES ± -

MATERIAL

FINISH

DWN S SCHLEGEL 8/2/05  
 CHK S YODER 8/2/05  
 APVD S YODER 8/2/05



PRODUCT SPEC

APPLICATION SPEC

WEIGHT -

NAME

JC6-F408-XX ASSEMBLY

SIZE CAGE CODE DRAWING NO RESTRICTED TO

A3 00779 C-1776584

CUSTOMER DRAWING

SCALE 1:1

SHEET 2 OF 2

REV C2