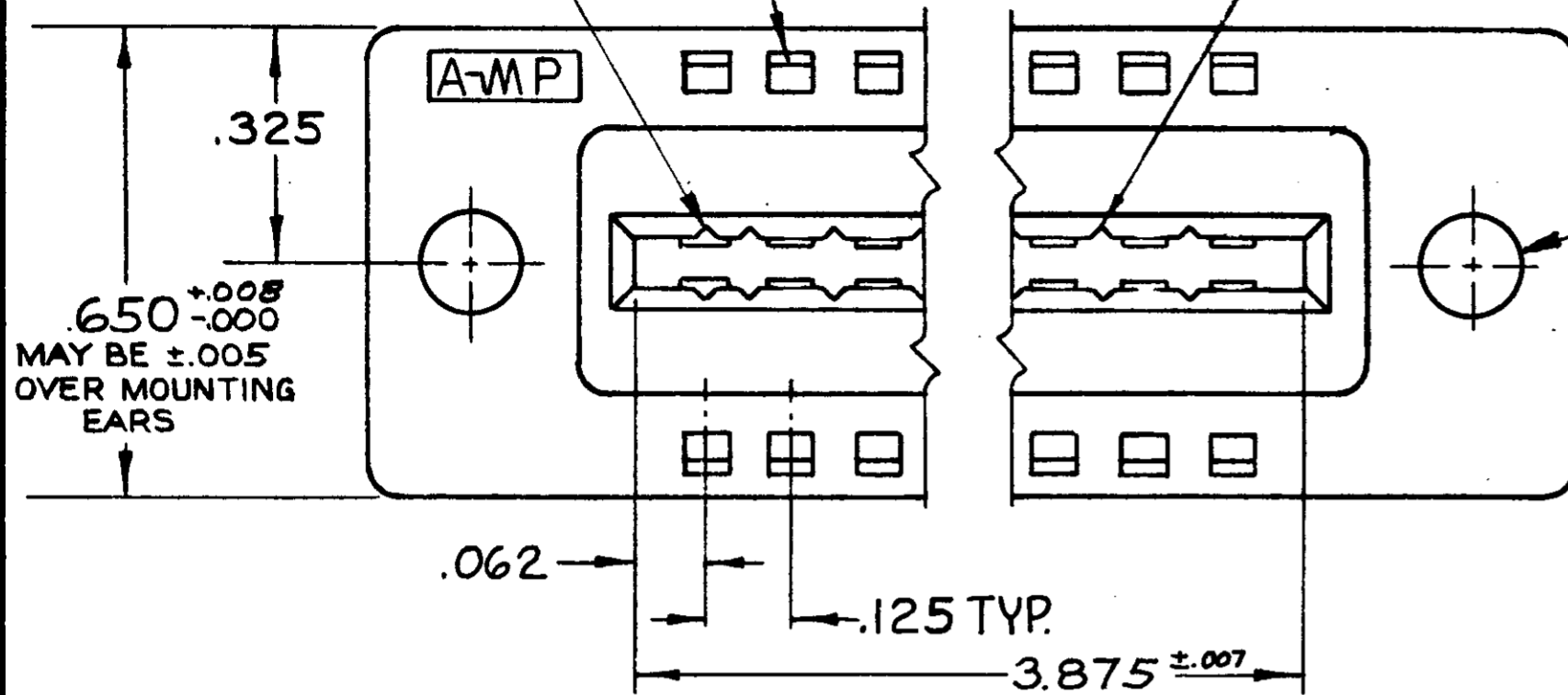


© 1964 BY AMP INCORPORATED. ALL RIGHTS RESERVED. AMP PRODUCTS COVERED BY PATENTS AND/OR PATENTS PENDING. APPROVED PER GOVT CONTRACT NO.

LOCATION FOR AMP-TAB FEMALE CONTACT

LOCATION FOR KEYING PLUG 582501-1 (FOR INTER-CONTACT KEYING)

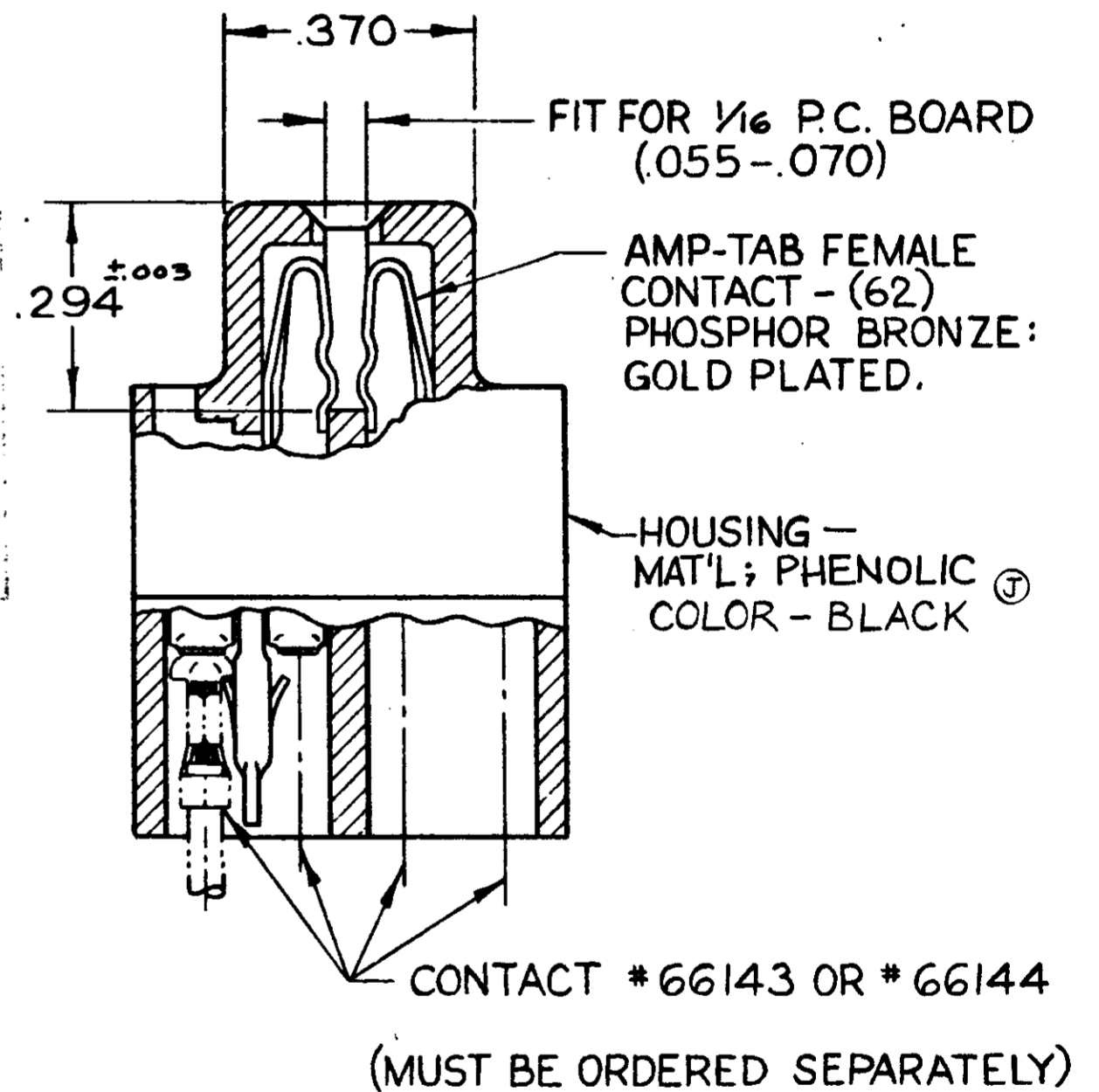
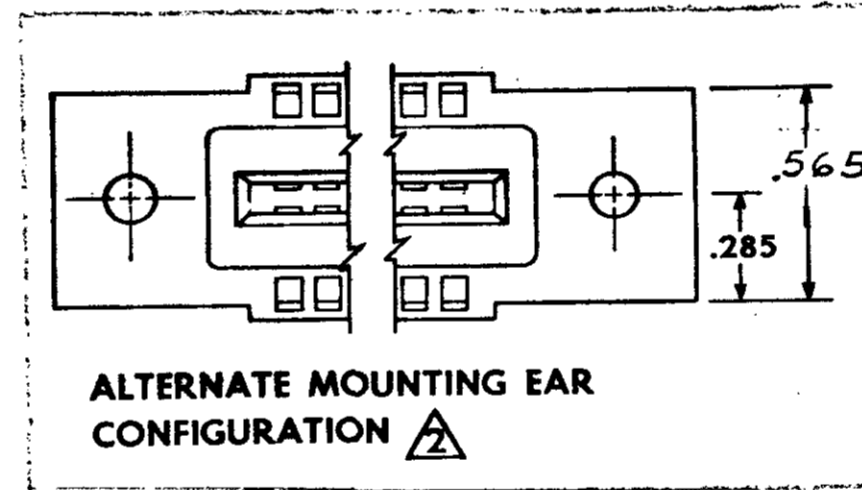
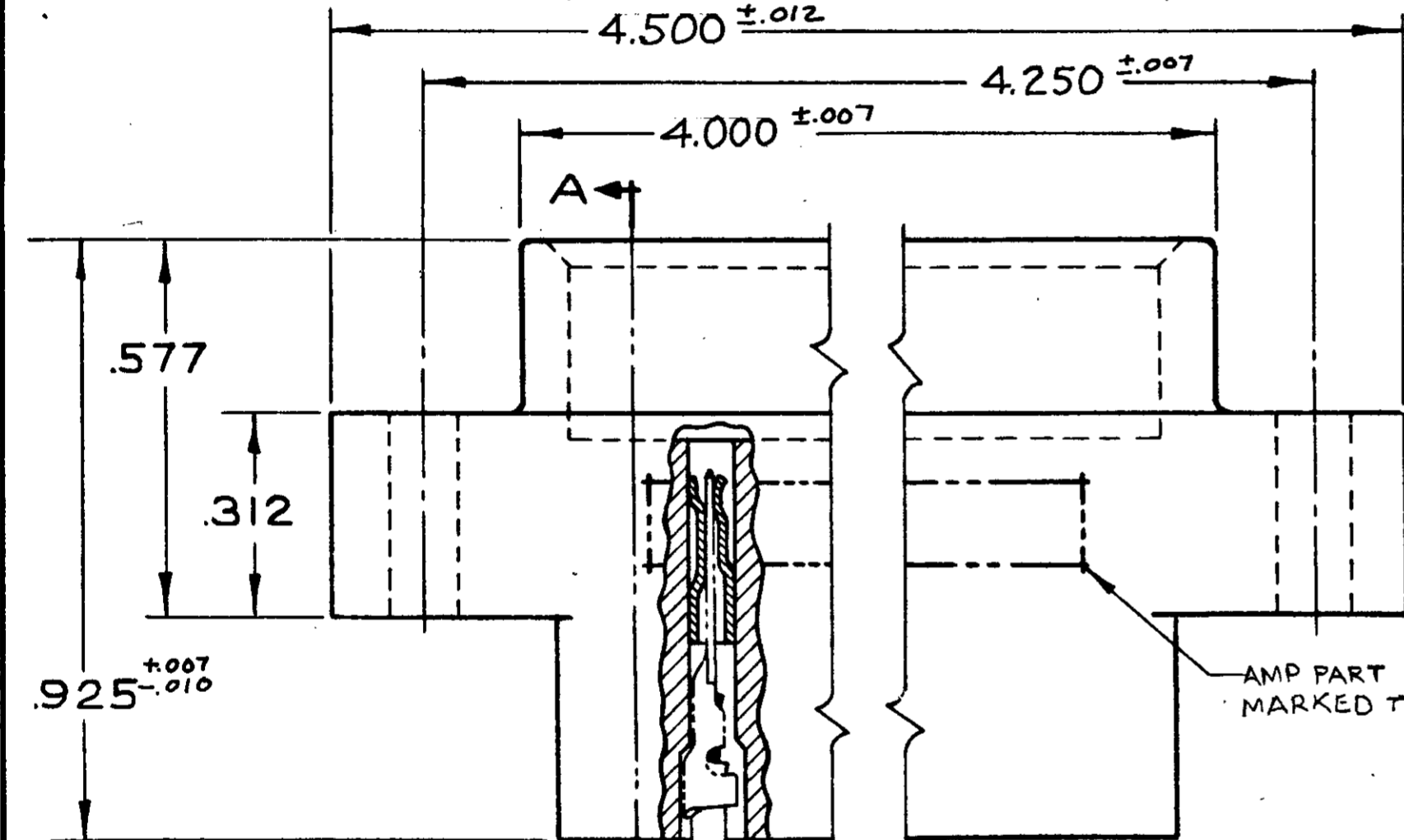
REVISIONS				
ZONE	LTR	DESCRIPTION	DATE	APPROVED
	N	ECO-08-020973	PY 11-08	JW



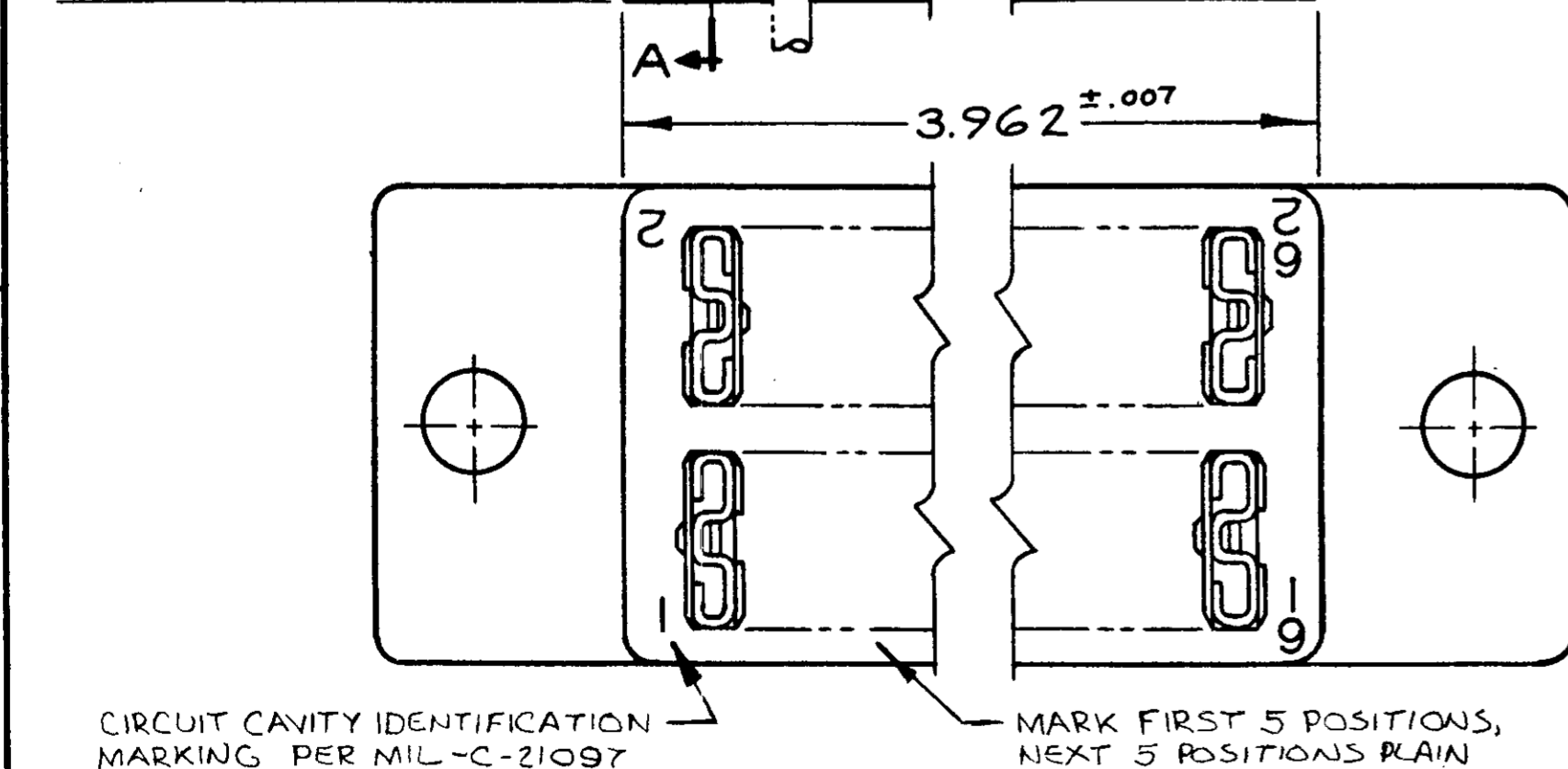
582722-1 I. AS SHOWN.

~~582722-2 SEE SHEET 2~~ **OBSOLETE**

- ▲ GROOVES FOR "ON CONTACT KEYING" AMP'S OPTION DEPENDING ON METHOD OF MANUFACTURE. FOR "ON CONTACT" KEYING USE KEYING PLUG P/N 583487-1. (MUST BE ORDERED SEPARATELY.)
- ▲ MOUNTING EAR CONFIGURATION AMP'S OPTION DEPENDS ON METHOD OF MANUFACTURE.
- 3. LASER MARKING ACCEPTABLE FOR ALL MARKING



SECTION A-A



UNLESS OTHERWISE SPECIFIED DIMENSIONS ARE IN INCHES TOLERANCES ON		CONTRACT NO.		AMP INCORPORATED HARRISBURG, PENNSYLVANIA	
FRACTIONS	DECIMALS	ANGLES	DR <i>J. Asich</i>	DATE 5-13-67	AMP TRADE MARK
±	±.005	±	CHK <i>S. Verde</i>	DATE 3/21/67	
MATERIAL	SEE CALLOUT		DSGN ENGR	DATE	31 POSITION AMP-TAB CONNECTOR .125 CENTERS QUAD
HEAT TREAT	—		APPD <i>S. Kaufman</i>	DATE 3/23/67	
FINISH	SEE CALLOUT		DSGN APPD <i>R. Shuman</i>	DATE 2/28/67	SIZE C
			OTHER APPD		CODE IDENT NO 00779
					NUMBER 582722
					REV N
			SCALE 4-1		WT CALC ACTUAL SHEET

CUSTOMER DRAWING

AMP INFO  
LOC PRINT DIST  
IDF FO

NUMBER CUS. 582722