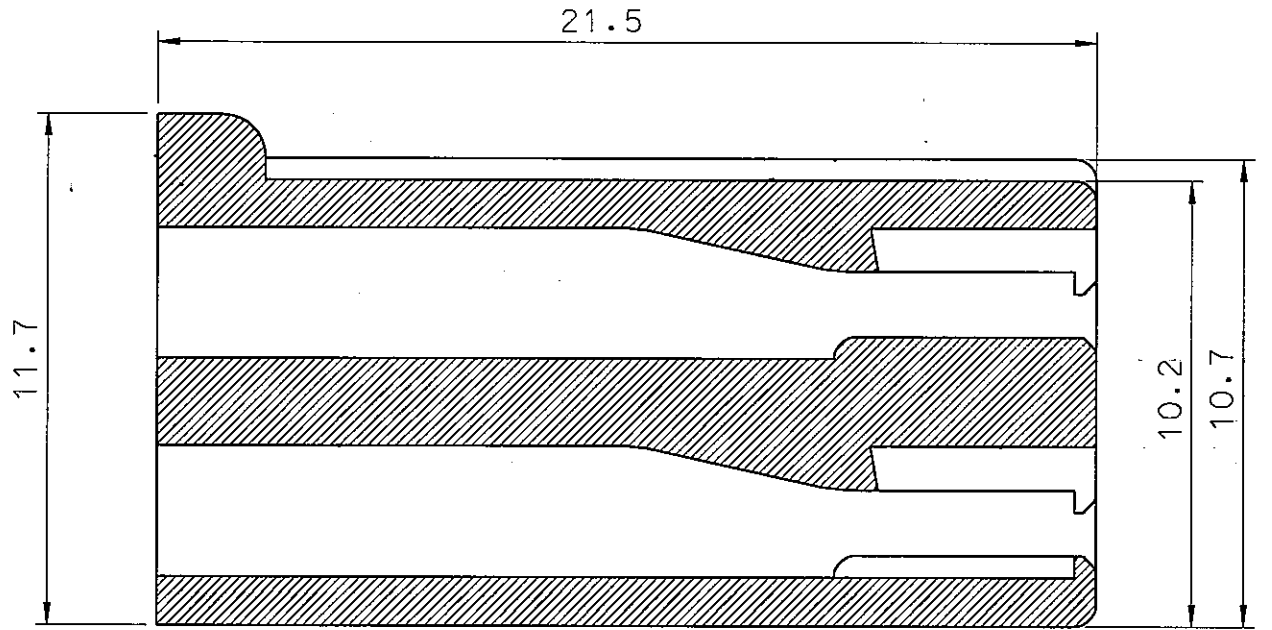
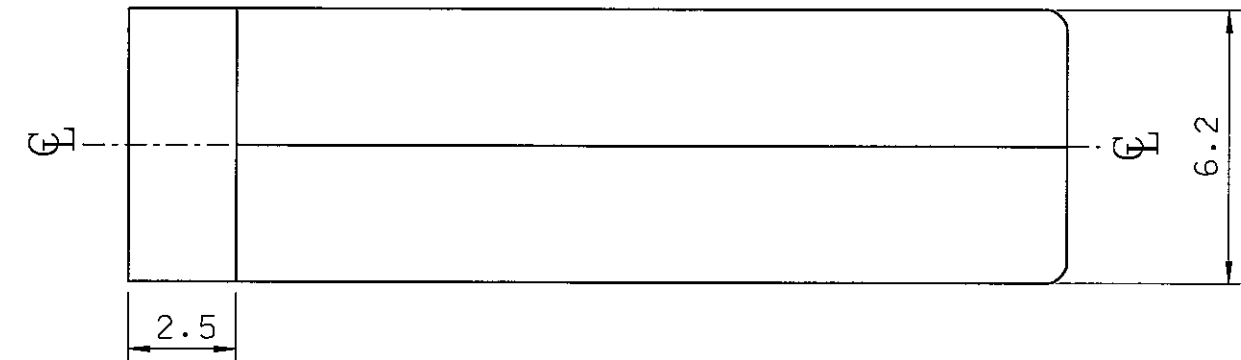
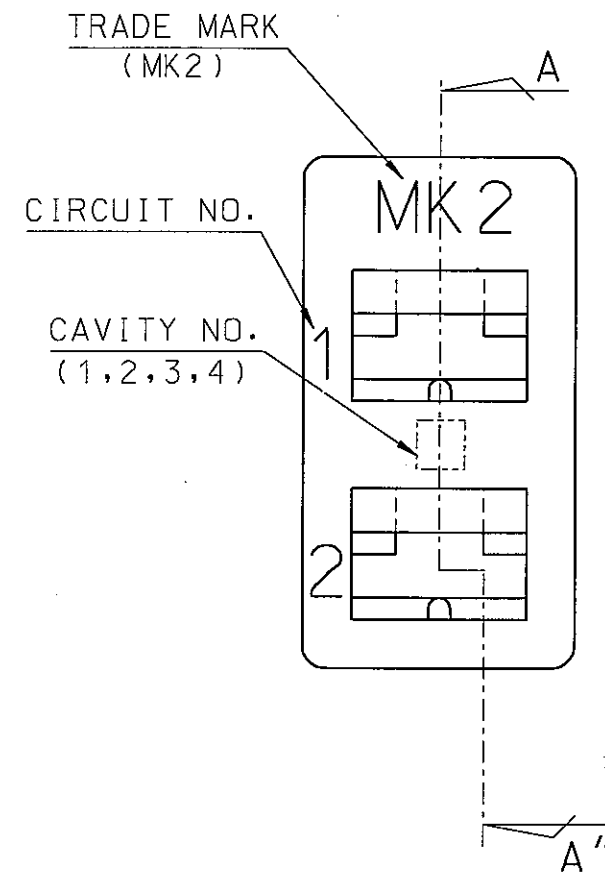
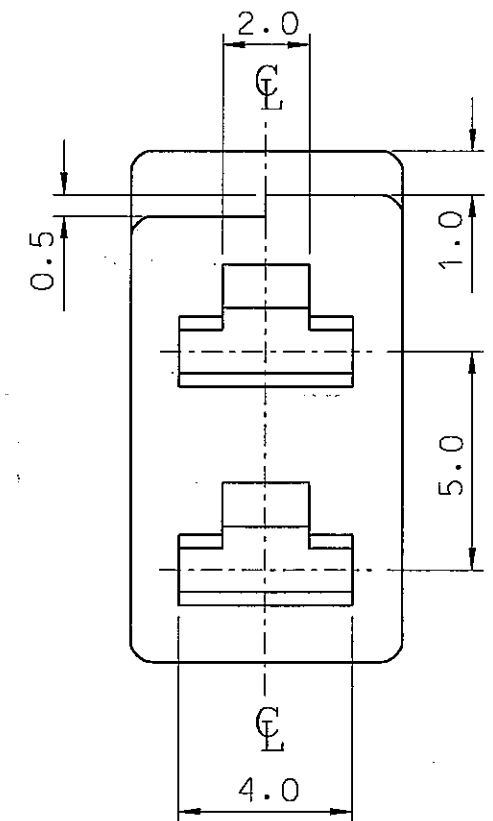


ENG. NO. SD 35112-0210  
 EDP NO.  
 SIMILAR ITEM  
 PROJECT NO. DOOR S/W - 2P



- NOTES
- MATERIAL : P.B.T (UL94V-0)  
 COLOR : NATURAL
  - APPLICABLE TERMINAL :  
 .110 SLIP-IN RECEPTACLE  
 (35711-06\*0)



				MATERIAL	SEE NOTES	molex MOLEX-KOREA CO.,LTD.		
				GENERAL TOLERANCE			DRAWN BY	CHK'D BY
				DIMENSION :			J. S. KANG	b.k.chu/3
				ANGLE :			APP'D BY	SCALE
							9/2/93	6/1
				DIMENSION CLASSIFICATION			TITLE :	SHEET
				▽ : CRITICAL			ASS'Y PART	DOOR S/W HSG-2P
				▼ : MAJOR			DESCRIPTION	1 of 1
				( ) : REFERENCE			ENG. NO.	REV
A	TEMPORARY RELEASED	PDR	93			SD 35112-0210	A	
LTR	REVISION RECORD	ECN	DATE					
				REVISE ONLY ON CAD SYSTEM				