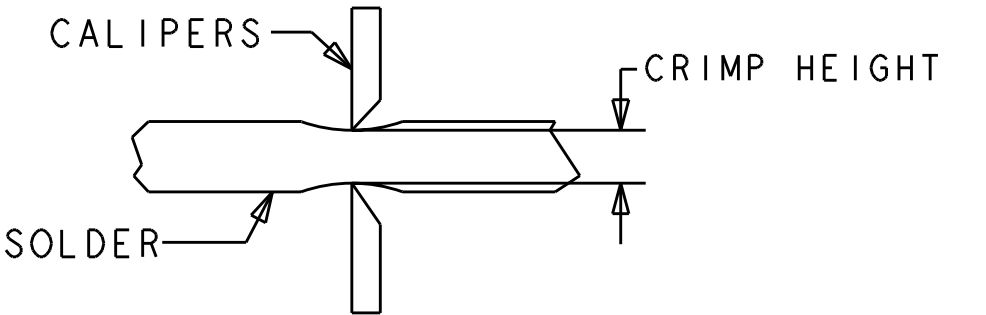


PART NUMBER	REV	FIRST USED	POWER UNIT	FEED TYPE
466778-3	AD	854400-1	LEADMAKER	AIRFEED
466778-4	AD	565435-5	BENCH MODEL K	AIRFEED
466778-5	AD	843003-1	LEADMAKER	DOUBLE ACTING AIRFEED
466778-6	AD	354500-1	BENCH MODEL G	AIRFEED
7-466778-7	Y	-	SPARE PARTS	

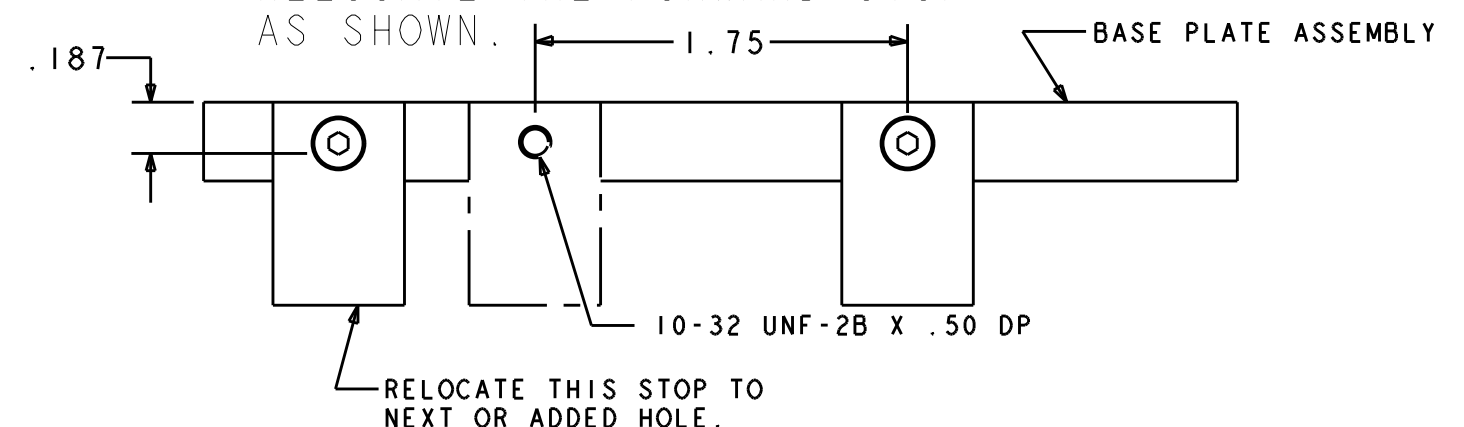
GROUP I	GROUP II	AMP TERMINAL	AMP CRIMP SPECS
350815	520140		
350819	520150	PAD LTR	CRIMP HEIGHT
520106	520276	A	.075±.002
520116	521142	B	.070±.002
520124	-	C	-
-	-	D	-
-	-	CRIMP	SIZE TYPE RANGE
-	-	WIRE	.205 D 16-14
-	-	INSUL	-

LOC	DIST	REV	DATE	BY	APPD
A	66	AD1	21FEB2007	BW	TM
		AD2	03JAN2008	MY	TE
		AD3	08JUL2009	MY	GB

- RECOMMENDED SPARE PARTS.
- GREASE LIGHTLY.
- GUARD MUST BE IN PLACE WHEN OPERATING APPLICATOR IN A BENCH MACHINE.
- SEE DRAWING FOR COMPONENTS.
- TO CHECK CRIMP HEIGHT, CRIMP SOLDER (Ø.19 60/40 SOLID CORE) AND MEASURE AT CENTER OF SLUG.



- CUT TO LENGTH AT ASSEMBLY.
- ITEM 16 MUST BE REMOVED IF APPLICATOR IS REMOVED FROM LEADMAKER AND PLACED IN AMP-O-LECTRIC* TERMINATING UNIT.
- ITEM 76 REQUIRED WHEN APPLICATOR IS REMOVED FROM LEADMAKER AND PLACED IN AMP-O-LECTRIC* TERMINATING UNIT.
- INSTALL ITEM 75 IN CHIP RELIEF HOLE OF T TERMINATOR UNIT BEFORE INSTALLING APPLICATOR.
- REMOVE WIRE FUNNEL WHEN USING THIS APPLICATOR ON AMPOMATOR* FEED SIDE T-TERMINATOR UNIT.
- IT MAY BE NECESSARY TO MODIFY THE T-TERMINATING UNIT'S BASE PLATE BEFORE INSTALLING THIS APPLICATOR BY ADDING A 10-32 HOLE TO RELOCATE THE FORWARD STOP AS SHOWN.



- FEED ADJUSTMENT MAY BE REQUIRED WHEN SWITCHING TERMINALS
- GROUP I: Ø.160 MAX INSULATION
GROUP II: Ø.240 MAX INSULATION.
- USE ITEMS 5 & 9 WITH GROUP I.
USE ITEMS 10 & 20 WITH GROUP II.
- AMPOMATOR* MODEL 48.
- LEADMAKER LM40 OR CS55.
- USE ITEM 46 WITH GROUP I.
USE ITEM 47 WITH GROUP II.
- ITEMS 75 AND 77 MUST BE INSTALLED IN THE G-TERMINATING UNIT CHIP RELIEF HOLE BEFORE INSTALLING THE APPLICATOR.
LEADMAKERS W/A T TERMINATING UNIT ONLY REQUIRE ITEM 75.
- ITEM NOT SHOWN.

-	1					4-21028-0	PIN, SLOTTED SPRING .094 X .750	121
-	3	3	3	3	-	21024-5	WASHER, SPRG LOCK, REG NO 10	117
-	4	4	4	4	-	21024-2	WASHER, SPRG LOCK, REG NO 4	114
-	1					21024-8	WASHER, SPRG LOCK, REG 3/8	112
-	4	4	4	4	-	21024-4	WASHER, SPRG LOCK, REG NO 8	111
-	1					22353-8	SCR, SHLD, SLOT HD, 3/16 DIA	105
-	1					21009-2	SCR, SET, SELF LOCKING 1/4-20 X .250	103
-	2	2	2	2	-	21017-2	SCREW, DRIVE	102
-	1					461264-1	PLATE, IDENTIFICATION	100
-	2	2	2	2	-	5-21006-6	SCR, SET, CUP POINT 10-32 X .750	99
-	1					22733-8	SCR, BHSC, SELF-LOCKING, 8-32 X .375	98
-	REF	REF	REF	REF	-	2-21002-9	SCR, BTN SKT HD CAP 10-32 X .750	97
-	REF	REF	REF	REF	-	2-22733-8	SCR, BHSC, SELF-LOCKING, 1/4-20 X .625	96
-	1					2-21002-7	SCR, BTN SKT HD CAP 10-32 X .500	95
-	4	4	4	4	-	2-21002-2	SCR, BTN SKT HD CAP 8-32 X .500	94
-	2	4	2	4	-	1-21000-4	SCR, SKT HD CAP 4-40 X .375	93
-	-	2	-	2	-	1-21002-7	SCR, BTN SKT HD CAP 6-32 X .375	92
-	2	2	2	2	-	1-21002-3	SCR, BTN SKT HD CAP 4-40 X .250	91
-	2	2	2	2	-	3-21000-0	SCR, SKT HD CAP 8-32 X .875	87
-	1					2-22603-1	SCREW, MACH, HEX HD, 8-32 X .375	86
-	2	2	2	2	-	1-21000-3	SCR, SKT HD CAP 4-40 X .250	85
-	1					2-21000-7	SCR, SKT HD CAP 8-32 X .500	84
-	1					3-21000-4	SCR, SKT HD CAP 10-32 X .375	81
-	-					1-18023-1	SCR, SHC, M4x10	80
-	-					462992-5	GUARD ASSY	79
-	REF	-	-	-	-	679532-1	INSERT, GUARD	78
-	-					189728-1	BRACKET, SPACER	77
-	-	REF	1	-	-	803931-1	BRACKET, HOLD DOWN	76
-	-					568681-1	SPACER, BASE PLATE	75
-	1					690603-1	SPRING ASSIST AMP-O-MATOR APPLICATOR	74
-	1					23030-1	SCR, SKT HD CAP, S-LOCK, 6-32 X .25	73
-	1					3-21001-5	SCR, SKT HD CAP 3/8-16 X 1.000	72
-	1					459610-3	MOUNT, FEED BRACKET	71
-	-					692655-5	AIR FEED VALVE ASSEMBLY	69

ITEM NO	DESCRIPTION	QTY	UNIT	REVISION	DATE	BY	APPD
68	AIR FEED ASSY						
67	VALVE, SHUT-OFF						
66	AIR FEED VALVE ASSEMBLY						
65	ASSEMBLY, AIR FEED						
64	SCR, SKT HD CAP 10-32 X 1.000						
59	CAP, RAM						
58	HOUSING, APPL CSTG						
56	FINGER, FEED						
55	AIR FEED VALVE ASSEMBLY						
53	FEED FINGER ASSEMBLY						
51	APPLICATOR, BASIC SUBASSEMBLY						
50	APPLICATOR, BASIC SUBASSEMBLY						
49	PLATE, REAR SHEAR						
48	HOLDER, SHEAR						
47	SUPPORT, INSULATION						
46	SUPPORT, INSULATION						
45	PLUG, NYLON						
44	RAM, SIDE FEED						
43	SHIM SUB-ASSY						
42	WASHER, RAM (.115)						
41	CRIMPER, BOLT SPECIAL						
40	BALL, STEEL						
39	SPRING, COMPRESSION						
38	DISC, SPRING						
37	WIRE DISC						
36	SPRING, COMPRESSION						
35	POST, RAM						
34	PLATE, BASE						
33	PLATE, BASE						
32	ADJUSTMENT SCREW						
31	WASHER, WAVE SPRING						
30	BLOCK, STRIP GUIDE ADJUST						
29	PLATE, STRIP GUIDE						
27	SPRING, COMPRESSION						
26	LEVER, DRAG RELEASE						
25	DRAG, TERMINAL						
24	FRONT STRIP GUIDE						
23	GUIDE, STRIP, FRONT						
21	SPRING, COMPRESSION						
20	FUNNEL, WIRE						
19	STRIPPER						
18	HOLD DOWN, TERMINAL						
16	GUIDE, CARRIER SCRAP						
15	PLATE, REAR SHEAR						
14	HOLDER, SHEAR, REAR						
13	REAR FLOATING SHEAR						
12	SPRING, COMPRESSION						
11	STOP, SHEAR						
10	TERMINAL SUPPORT						
9	TERMINAL SUPPORT						
8	ANVIL, SAND-BLASTED 16-14						
7	SPACER						
6	DEPRESSOR SHEAR, REAR						
5	WIRE FUNNEL						
4	BLOCK, FL CRIMPER SPACER						
3	STABILIZER						
2	SPACER						
1	CRIMPER, SEMI FLAT 16-14						
-77	U/M						

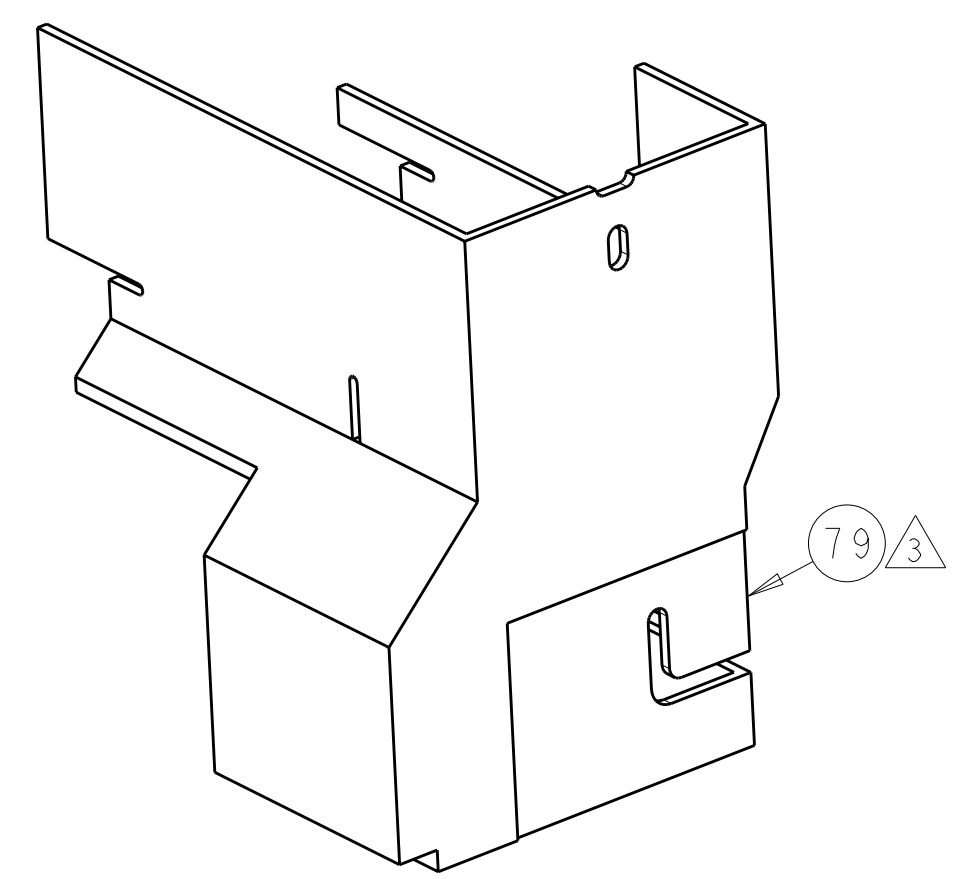
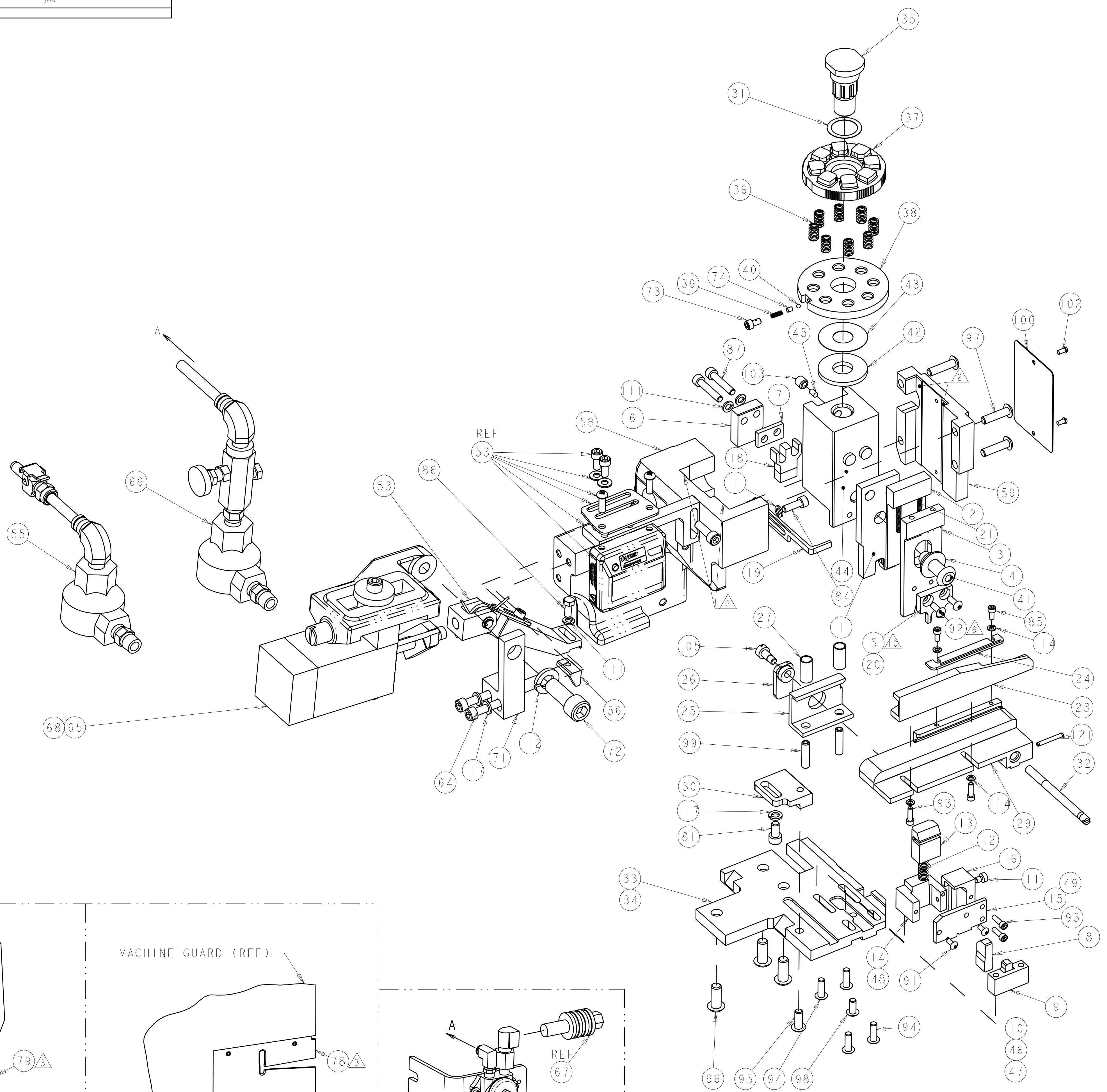
THIS IS SUBJECT TO CHANGE WITHOUT NOTICE AND WITHOUT OBLIGATION. TOLERANCES UNLESS OTHERWISE SPECIFIED:

DIMENSIONS:	IN	9 PLC ±	1 PLC ±	2 PLC ±	3 PLC ±	4 PLC ±	5 PLC ±	6 PLC ±	7 PLC ±	8 PLC ±	9 PLC ±
MATERIAL:											
FINISH:											

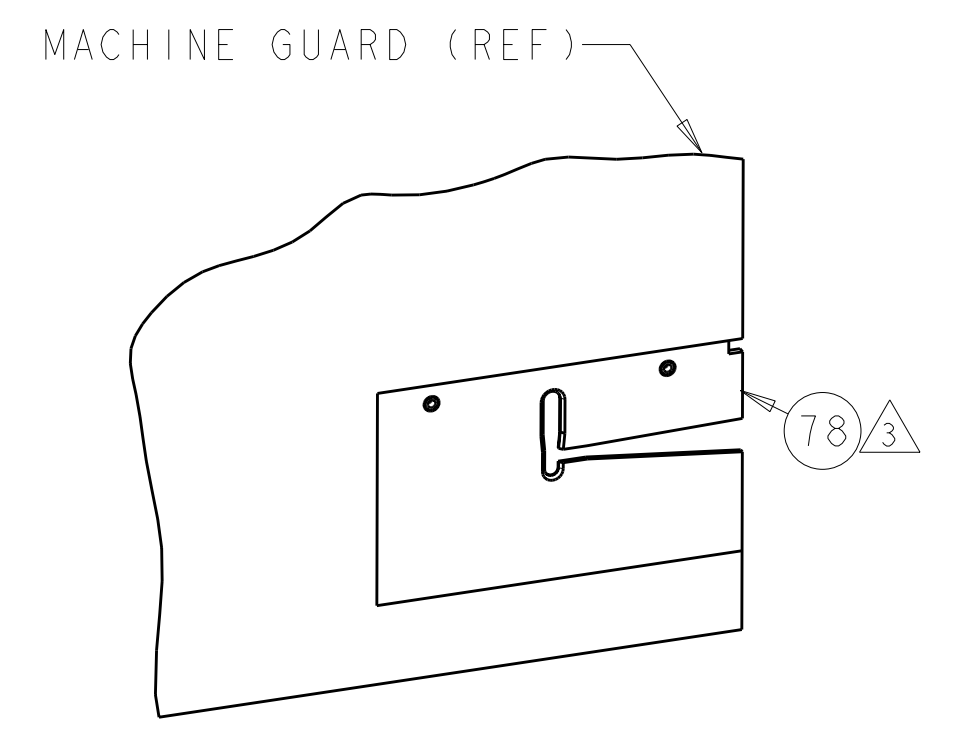
DATE: 22JAN2007
 CHK: T. ELBIN
 APVD: T. ELBIN
 NAME: T. ELBIN
 PRODUCT SPEC: SIDE FEED HDM APPLICATOR
 APPLICATION SPEC: -
 WEIGHT: -
 SCALE: 1:5
 SHEET: 1 OF 2
 REV: AD3

tyco Tyco Electronics
 Harrisburg, PA 17105-3608

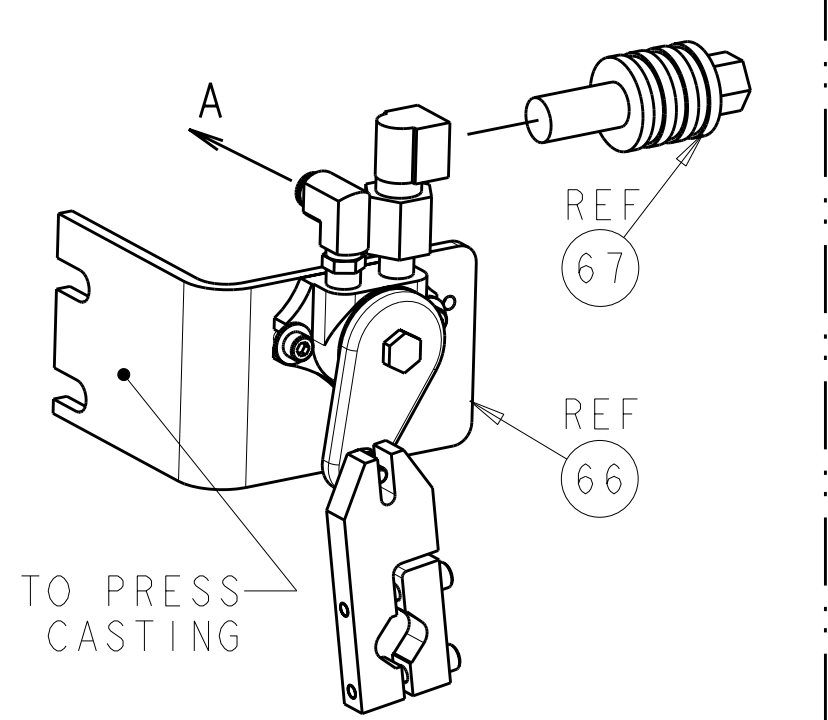
LOC	DIST	REVISIONS					
A	66	P	LTR	DESCRIPTION	DATE	DWN	APVD
		-	-	SEE SHEET 1	-	-	-



AMP-O-LECTRIC* TERMINATOR GUARD



G TERMINATOR GUARD



TO PRESS CASTING

<small>THIS DRAWING IS UNPUBLISHED. RELEASED FOR PUBLICATION 2007. IT IS SUBJECT TO CHANGE WITHOUT NOTICE AND WITHOUT OBLIGATION. TOLERANCES UNLESS OTHERWISE SPECIFIED: DIMENSIONS: IN 9 PLC ±. 1 PLC ±. 3 PLC ±. 4 PLC ±. ANGLES ±. MATERIAL: FINISH:</small>		DWN: B. WEAVER 22JAN2007 CHK: T. ELBIN 22JAN2007 APVD: T. ELBIN 22JAN2007	tyco Electronics Tyco Electronics Harrisburg, PA 17105-3608
DIMENSIONS: IN TOLERANCES UNLESS OTHERWISE SPECIFIED: 9 PLC ±. 1 PLC ±. 3 PLC ±. 4 PLC ±. ANGLES ±. MATERIAL: FINISH:		NAME: SIDE FEED HDM APPLICATOR PRODUCT SPEC: - APPLICATION SPEC: - WEIGHT: - CUSTOMER DRAWING:	SIZE: CAGE CODE: DRAWING NO: A1100779C-466778 RESTRICTED TO: - SCALE: 3:4 SHEET 2 OF 2 REV AD3