

OPTIONAL TERMINALS FOR PUSH ON OR SOLDER CONNECTIONS (.032 X .250) [0.8 X 6.4]

(4) STANDOFFS TAPPED 1/4-28 X .38 [9.5] DEEP FOR MOUNTING BOLTS

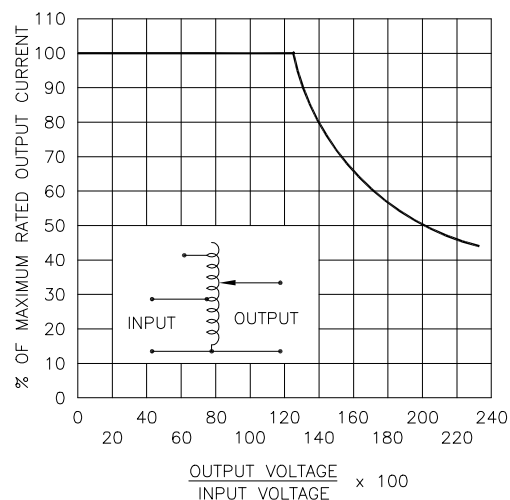
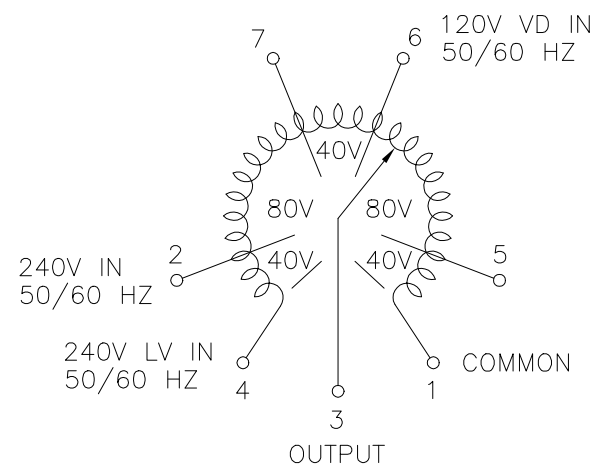
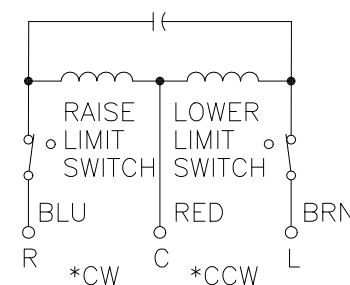


FIGURE A
 MAXIMUM OUTPUT CURRENT OF ANY DUAL INPUT VOLTAGE OR VOLTAGE DOUBLER UNIT OPERATED AT LOWER INPUT VOLTAGE.



SCHEMATIC
 VIEW FROM BASE END
 FUSE RECOMMENDED BUT NOT SUPPLIED



MOTOR CIRCUIT
 120V, 50/60 HZ
 * ROTATION AS VIEWED FROM MOTOR END
 MOTOR SPEED: SEE CHART

| SPEED (SECONDS) | MODEL NUMBER | DIM "A" |
|-----------------|--------------|---------------|
| 5 | 5M1020B | 10.56 [268.2] |
| 15 | 15M1020B | 10.56 [268.2] |
| 30 | 30M1020B | 10.95 [278.1] |
| 60 | 60M1020B | 10.95 [278.1] |

| WIRING | INPUT | | OUTPUT | | | | SHAFT ROTATION TO INCREASE VOLTAGE | TERMINAL CONNECTIONS | | | |
|--------------|-------|-------|--------|-----------------------|----------|-------------------------|------------------------------------|--|-------|--------|--------|
| | VOLTS | HERTZ | VOLTS | CONSTANT CURRENT LOAD | | CONSTANT IMPEDANCE LOAD | | FOR INCREASING VOLTAGE AS VIEWED FROM BASE END + | | | |
| | | | | MAX. AMPS | MAX. KVA | MAX. AMPS | | MAX. KVA | INPUT | JUMPER | OUTPUT |
| SINGLE PHASE | 240 | 50/60 | 0-240 | 3.5 | 0.84 | 5.0 | 1.20 | CW | 1-4 | --- | 4-3 |
| | | | 0-280 | 3.5 | 0.98 | --- | --- | CCW | 1-4 | --- | 1-3 |
| | 120 | 50/60 | 0-280 | 3.5# | 0.42§ | --- | --- | CW | 1-2 | --- | 1-3 |
| | | | 0-280 | 3.5# | 0.42§ | --- | --- | CCW | 1-2 | --- | 1-3 |

MAXIMUM OUTPUT CURRENT IN OUTPUT VOLTAGE RANGE FROM 0 TO 25% ABOVE LINE VOLTAGE. AT HIGHER OUTPUT VOLTAGES, THE OUTPUT CURRENT MUST BE REDUCED ACCORDING TO THE DERATING CURVE FIGURE A.

§ MAXIMUM KVA AT MAXIMUM OUTPUT VOLTAGE AND CORRESPONDING DERATED OUTPUT CURRENT. MAXIMUM KVA FOR LOWER VOLTAGES MAY BE CALCULATED FROM DERATING CURVE FIGURE A.

+ MOTOR DRIVEN UNITS USE TERMINAL CONNECTIONS FOR CCW INCREASING VOLTAGE, AS VIEWED FROM BASE END.

UNLESS OTHERWISE SPECIFIED, TOLERANCE IS # DECIMALS .005 Holes .002 ANGLES 1° DRAFT 1-1/2° UNITS IN [mm]

MATERIAL: ALL DIMENSIONS APPLY AFTER PLATING

TITLE: SPEC. CONTROL DRAWING
 MOTORIZED VARIABLE XFMR
 MODEL: M1020B

STACO ENERGY PRODUCTS CO.
 A COMPONENTS CORPORATION OF AMERICA COMPANY
 DAYTON, OHIO U.S.A.

| | | | | | |
|---------------------|--------------|----------------------|-----------------------|-------------------|------|
| DRAWN BY S.A. SMITH | DATE 9/23/97 | FIRST USED ON | DO NOT SCALE DWG. | CUSTOMER APPROVAL | DATE |
| CHECKER | DATE | WEIGHT APPROX. 16.75 | CODE IDENT. NO. 83008 | DWG. NO. 031-2410 | |
| ENGINEER | DATE | SCALE 1=1 | SHEET 1 OF 1 | | |