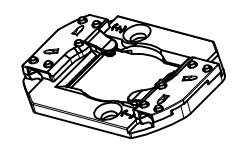
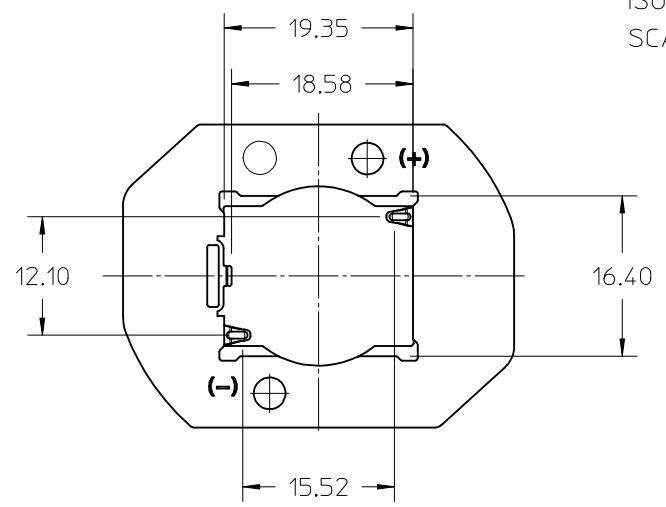
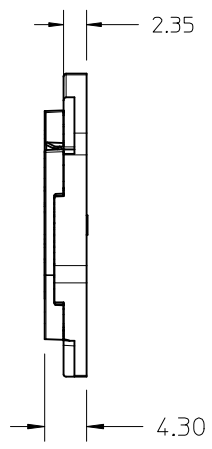
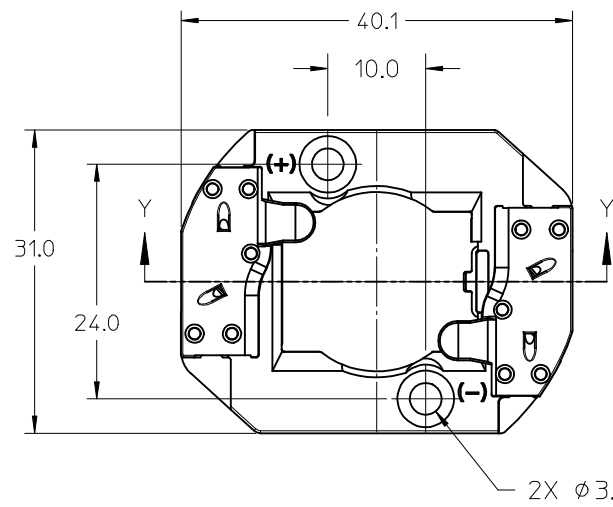


PART NUMBER	DESCRIPTION	MATERIAL	COLOR	AGENCY APPROVAL
180580-0001	COB LED HOLDER ASSEMBLY - NYLON	POLYAMIDE, GLASS FILLED	NATURAL	YES (SEE NOTE 6)
180580-0101	COB LED HOLDER ASSEMBLY - PBT	POLYESTER, GLASS FILLED	WHITE	YES (SEE NOTE 6)



ISO VIEW
SCALE 1:1

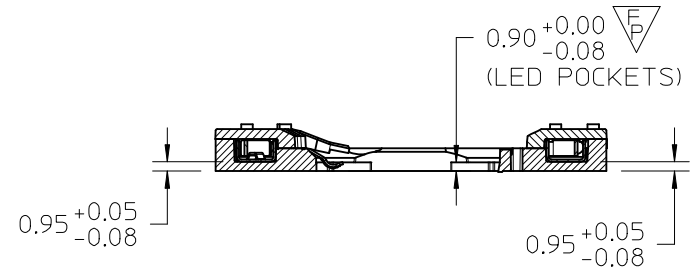
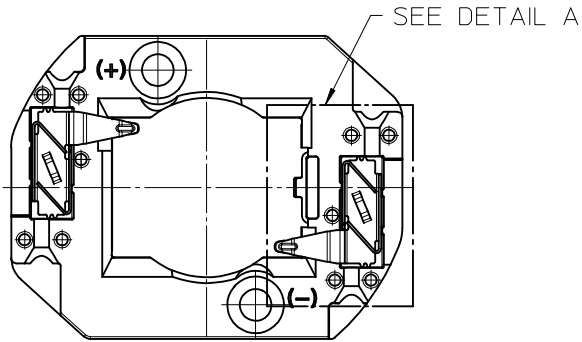


- 1) MATERIALS: HOUSIG AND CAPS: SEE CHART
- 2) WIRE TRAP TERMINALS: COPPER ALLOY
 - a. FINISH: LED CONTACT: GOLD OVER NICKEL, WIRE TRAP: TIN OVER NICKEL
- 3) THIS PRODUCT IS ELV AND ROHS COMPLIANT
- 4) APPLICABLE WIRE GAUGE - 18, 20, OR 22 AWG
 - a. SOLID WIRE IS PREFERRED
 - b. IF STRANDED WIRE IS USED, PRE-TINNED IS RECOMMENDED
 - c. 1 cm +2.00/-0.00 STRIP LENGTH IS RECOMMENDED
- 5) MOUNT HOLDER USING M3 OR 4-40 SCREWS (2), TORQUE: 0.2 MIN TO 0.4 MAX NEWTON METERS
- 6) UL RECOGNITION TO UL496; c-UL RECOGNITION TO CSA-C22.2 NO. 43 (2008) - RATED 600V UL FILE NUMBER: E345583 (SEE TABLE)
- 7) DIMENSIONS IN PARENTHESES (XX.XX) ARE FOR REFERENCE ONLY

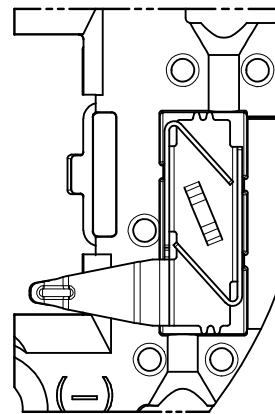
RELEASED EC NO: SSL2017-0012 DRAWN: ZAB, JANOVSKI 2016/08/17 CHKD: T3 APPR: GMEYER 2016/09/21	DESCRIPTION REV	QUALITY SYMBOLS	GENERAL TOLERANCES (UNLESS SPECIFIED)	DIMENSION STYLE MM ONLY		SCALE 2:1	DESIGN UNITS METRIC	THIRD ANGLE PROJECTION	
		▽=0	mm INCH	DRAWN BY DATE	TITLE COB LED HOLDER 19.0MM X 16.0MM RECTANGULAR COB molex				
		▽=0	4 PLACES ± --- ± ---	MDEVITO 2012/09/06					
		▽=0	3 PLACES ± --- ± ---	CHECKED BY DATE	MATERIAL NO.		DOCUMENT NO.	SHEET NO.	
▽=0	2 PLACES ± 0.13 ± ---	CCARRANZA 2012/09/06	SEE CHART		SD-180580-001	1 OF 4			
	1 PLACE ± 0.25 ± ---	APPROVED BY DATE	DRAFT WHERE APPLICABLE MUST REMAIN WITHIN DIMENSIONS						
	0 PLACE ± --- ± ---	DMCGOWAN 2012/09/13	THIS DRAWING CONTAINS INFORMATION THAT IS PROPRIETARY TO MOLEX INCORPORATED AND SHOULD NOT BE USED WITHOUT WRITTEN PERMISSION						
		ANGULAR ± 1/2°							

10 9 8 7 6 5 4 3 2 1

NOTE: WIRE TRAP CAPS ARE REMOVED FOR CLARITY



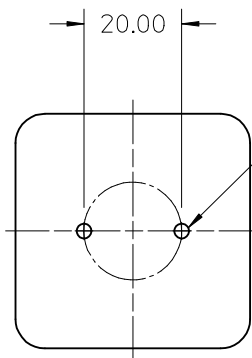
SECTION Y-Y



DETAIL A
Scale 4:1

VIEW OF TWO-WAY WIRE TRAP

WIRE TRAPS CAN ACCOMMODATE
18, 20, OR 22 GAUGE WIRE



M3 OR 4-40 TAPPED HOLES (2)
TORQUE SCREWS 0.2 MIN TO
0.4 MAX NEWTON METERS

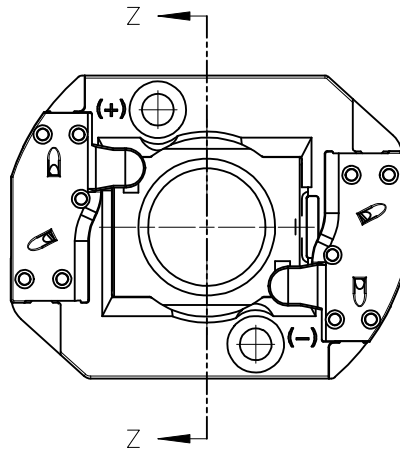
RECOMMENDED MOUNTING DIMENSIONS (NTS)

RELEASED EC NO: SSL2017-0012 T3 DRAWN: ZABJANOVSKI 2016/08/17 CHKD: APPR: GMEYER 2016/09/21 REV	QUALITY SYMBOLS	GENERAL TOLERANCES (UNLESS SPECIFIED)	DIMENSION STYLE	SCALE	DESIGN UNITS	THIRD ANGLE PROJECTION
	$\nabla Z=0$ $\nabla Y=0$ $\nabla X=0$	mm INCH 4 PLACES ± --- ± --- 3 PLACES ± --- ± --- 2 PLACES ± 0.13 ± --- 1 PLACE ± 0.25 ± --- 0 PLACE ± --- ± ---	MM ONLY	2:1	METRIC	
		ANGULAR ± 1/2°	DRAWN BY DATE	TITLE	COB LED HOLDER 19.0MM X 16.0MM RECTANGULAR COB molex	
		DRAFT WHERE APPLICABLE MUST REMAIN WITHIN DIMENSIONS	MDEVITO 2012/09/06 CHECKED BY DATE CCARRANZA 2012/09/06 APPROVED BY DATE DMCGOWAN 2012/09/13	SEE CHART		
			MATERIAL NO.	DOCUMENT NO.	SHEET NO.	
			SIZE B		SD-180580-001	2 OF 4

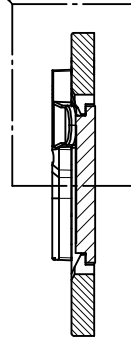
THIS DRAWING CONTAINS INFORMATION THAT IS PROPRIETARY TO MOLEX INCORPORATED AND SHOULD NOT BE USED WITHOUT WRITTEN PERMISSION

9 8 7 6 5 4 3 2 1

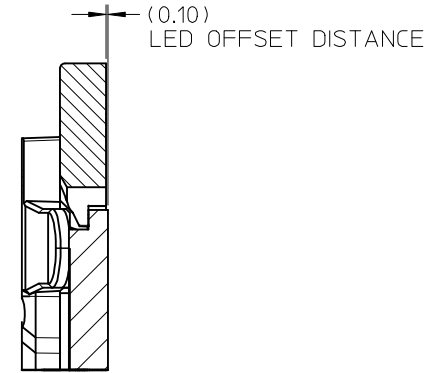
ILLUSTRATION OF HOLDER MATED WITH LED



SEE DETAIL 1



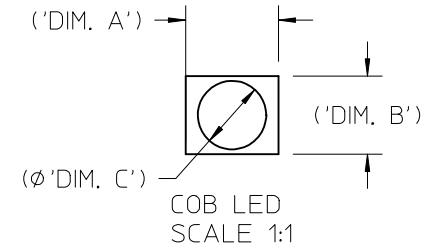
SECTION Z-Z



DETAIL 1
SCALE 4:1

ENTER DESCRIPTION EC NO: SSL2017-0012 T3 DRWNLZABJANOVSKI 2016/08/17 CHKD: APPR:GMEYER 2016/09/21 REV	QUALITY SYMBOLS $\nabla F/0$ $\nabla F/0$ $\nabla F/0$	GENERAL TOLERANCES (UNLESS SPECIFIED) <table border="1"> <thead> <tr> <th></th> <th>mm</th> <th>INCH</th> </tr> </thead> <tbody> <tr> <td>4 PLACES</td> <td>\pm---</td> <td>\pm---</td> </tr> <tr> <td>3 PLACES</td> <td>\pm---</td> <td>\pm---</td> </tr> <tr> <td>2 PLACES</td> <td>± 0.13</td> <td>\pm---</td> </tr> <tr> <td>1 PLACE</td> <td>± 0.25</td> <td>\pm---</td> </tr> <tr> <td>0 PLACE</td> <td>\pm---</td> <td>\pm---</td> </tr> </tbody> </table>		mm	INCH	4 PLACES	\pm ---	\pm ---	3 PLACES	\pm ---	\pm ---	2 PLACES	± 0.13	\pm ---	1 PLACE	± 0.25	\pm ---	0 PLACE	\pm ---	\pm ---	DIMENSION STYLE MM ONLY	SCALE 2:1	DESIGN UNITS METRIC	THIRD ANGLE PROJECTION
		mm	INCH																					
	4 PLACES	\pm ---	\pm ---																					
	3 PLACES	\pm ---	\pm ---																					
2 PLACES	± 0.13	\pm ---																						
1 PLACE	± 0.25	\pm ---																						
0 PLACE	\pm ---	\pm ---																						
		ANGULAR $\pm 1/2^\circ$	DRAWN BY MDEVITO	DATE 2012/09/06	TITLE COB LED HOLDER 19.0MM X 16.0MM RECTANGULAR COB																			
		DRAFT WHERE APPLICABLE MUST REMAIN WITHIN DIMENSIONS	CHECKED BY CCARRANZA	DATE 2012/09/06	APPROVED BY DMCGOWAN																			
			MATERIAL NO. SEE CHART	DATE 2012/09/13	DOCUMENT NO. SD-180580-001	SHEET NO. 3 OF 4																		

COB MFG.	TYPE	DIM. 'A'	DIM. 'B'	THK	DIM. 'C'
NICHIA	NFC*L060B-V*	19.0	16.0	1.0	13.5
NICHIA	NVC*L024*	19.0	16.0	1.0	13.0
NICHIA	NFC*L036B*	19.0	16.0	1.0	10.7
LUMILEDS	LUXEON 1202/1203	19.0	16.0	1.0	11.3
SAMSUNG	LC040C	19.0	16.0	1.0	12.6



ENTER DESCRIPTION EC NO: SSL2017-0012 TDR: DRW: HZAB, JANOVSKI 2016/08/17 CHKD: 3 APPR: GMEYER 2016/09/21	QUALITY SYMBOLS	GENERAL TOLERANCES (UNLESS SPECIFIED)		DIMENSION STYLE MM ONLY		SCALE 2:1	DESIGN UNITS METRIC	THIRD ANGLE PROJECTION	
	DESCRIPTION REV	▽=0 ▽=0	mm	INCH	DRAWN BY MDEVITO	DATE 2012/09/06	TITLE COB LED HOLDER 19.0MM X 16.0MM RECTANGULAR COB		
			4 PLACES ± --- ± ---		CHECKED BY CCARRANZA	DATE 2012/09/06			
			3 PLACES ± --- ± ---		APPROVED BY DMCGOWAN	DATE 2012/09/13	DOCUMENT NO. SD-180580-001		
			2 PLACES ± 0.13 ± ---		MATERIAL NO.				
1 PLACE ± 0.25 ± ---				SEE CHART					
0 PLACE ± --- ± ---		ANGULAR ± 1/2°							
DRAFT WHERE APPLICABLE MUST REMAIN WITHIN DIMENSIONS		THIS DRAWING CONTAINS INFORMATION THAT IS PROPRIETARY TO MOLEX INCORPORATED AND SHOULD NOT BE USED WITHOUT WRITTEN PERMISSION		SIZE B					