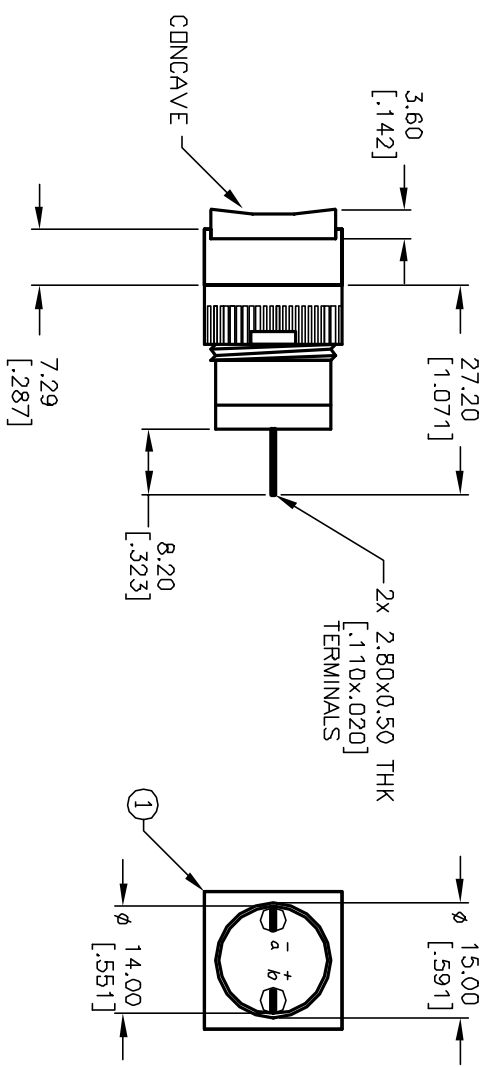
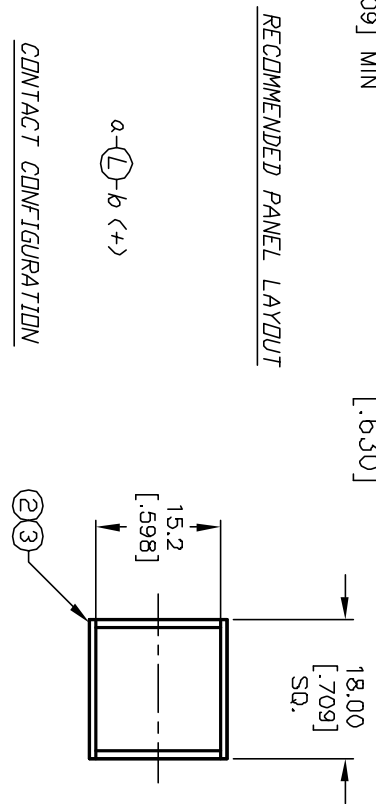
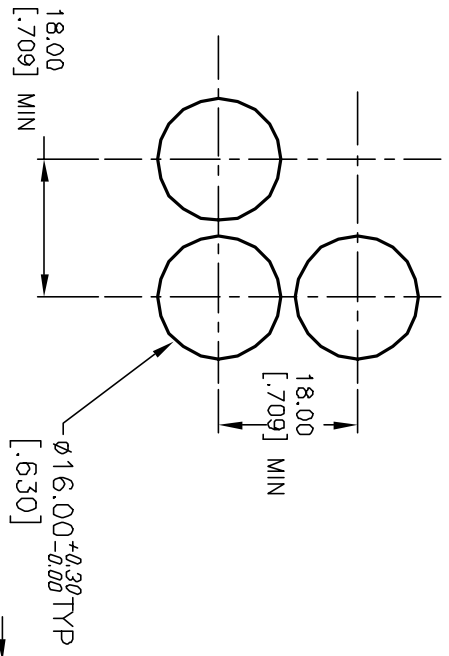


Item	Qty.	Dwg. No.	Part No.
1	1	F040002	L16 PLS10
2	1	F050404	50-004-04
3	1	F050304	50-003-04 RED LENS TRANSPARENT



- NOTES:
1. ALL DIMENSIONS IN MM [INCH]
  2. GENERAL TOLERANCE: X.X=±0.4  
X.XX=±0.25
  3. TERM. NOS. FOR REFERENCE ONLY.
  4. RATING: 5A @250V AC  
8A @125V AC
  5. LAMP VOLTAGE: 14VAC/DC 80mA DC LED
  6. MECHANICAL LIFETIME: >2 MILLION OPERATIONS
  7. CONTACT MATERIAL: COPPER ALLOY W/SILVER PLATING

REV.	ECN No.	DESCRIPTION	DATE	CHKD
A	12439	RELEASED FOR PRODUCTION	1/15/03	CB

TITLE		SCALE		DATE	DR	DWG	REV
L16 PL S10 B RED		1:1		--	--	XF0108P	A

**E-SWITCH®**

THE INFORMATION CONTAINED IN THIS DOCUMENT IS PROPRIETARY TO E-SWITCH AND IS NOT TO BE COPIED OR TRANSFERRED