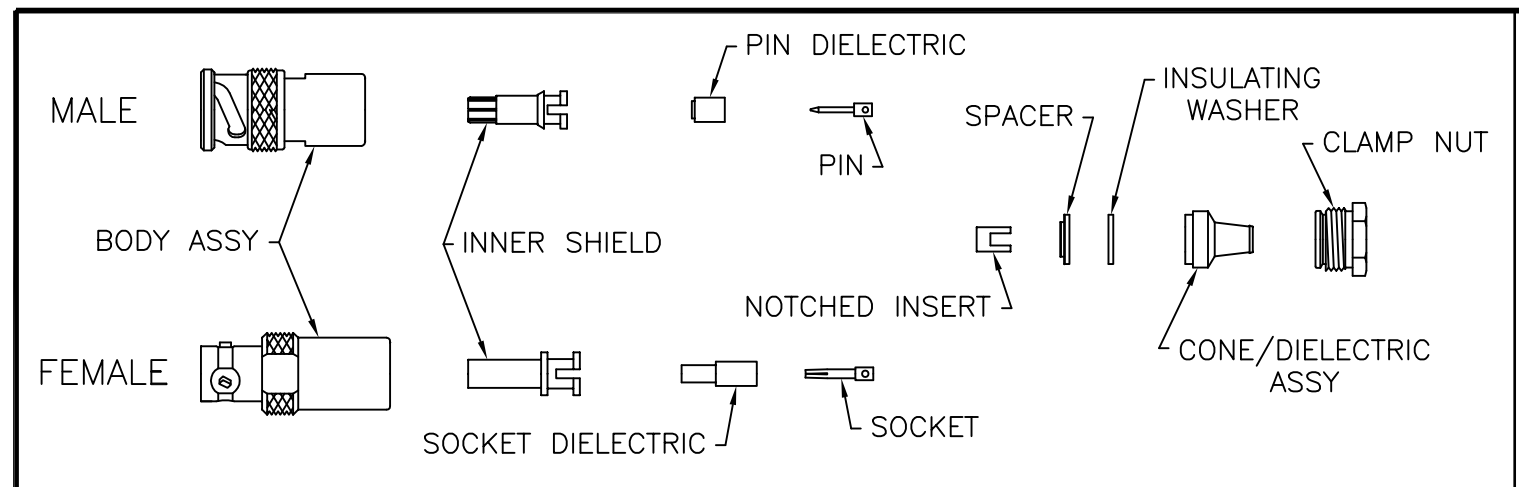


THE INFORMATION CONTAINED HEREON IS THE PROPERTY OF EMERSON NETWORK POWER, RECEIPT, POSSESSION OR TRANSMITTAL OF THIS DRAWING DOES NOT LICENSE OR IMPLY ANY RIGHT TO USE, SELL, PROTOTYPE OR MANUFACTURE FROM THIS INFORMATION. NO REPRODUCTIONS OR PUBLICATION OF THIS INFORMATION, IN WHOLE OR IN PART, SHALL BE MADE WITHOUT WRITTEN AUTHORIZATION FROM EMERSON NETWORK POWER.

DWG NO. TAI-102 SH 1

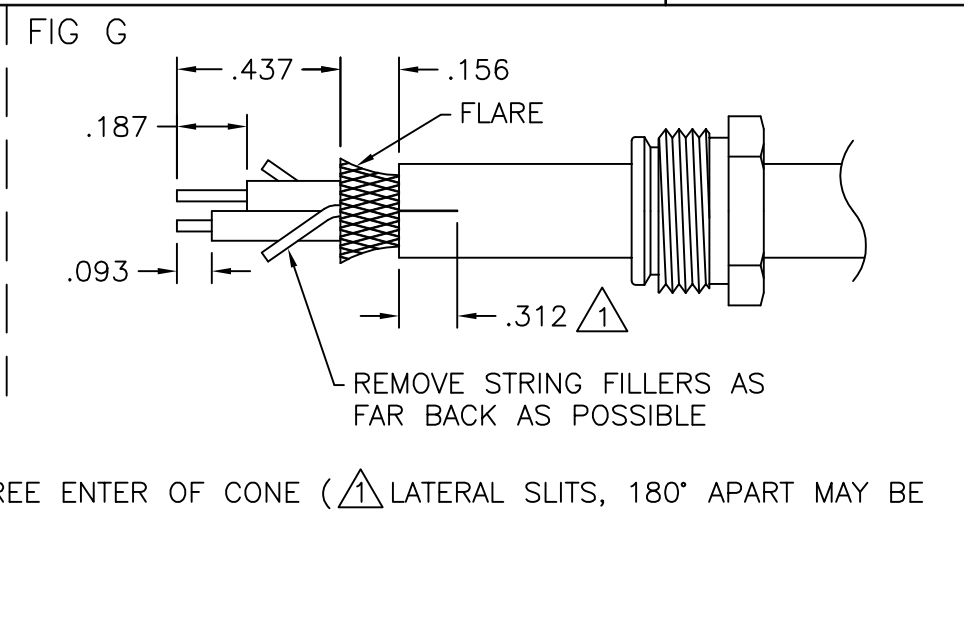
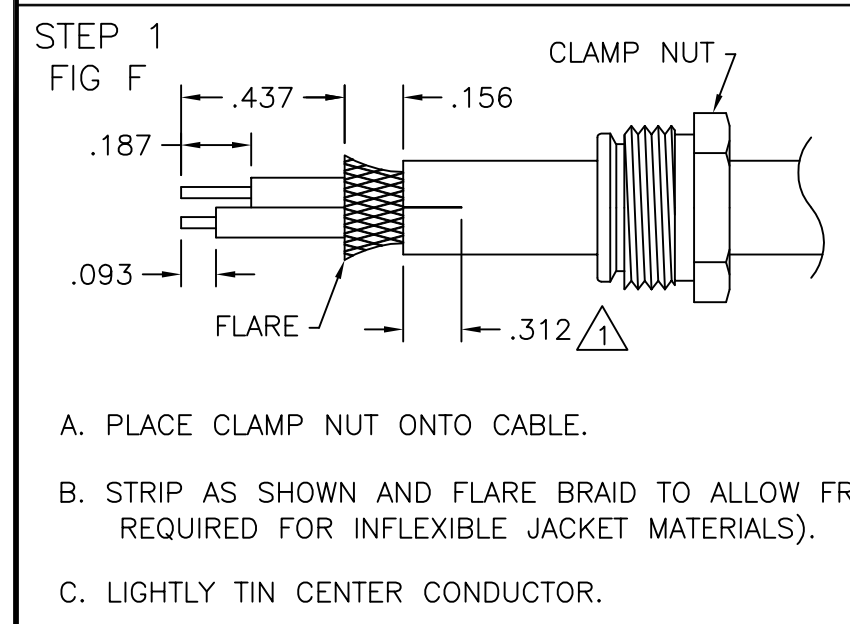


**cinch**  
CONNECTIVITY SOLUTIONS  
a bel group

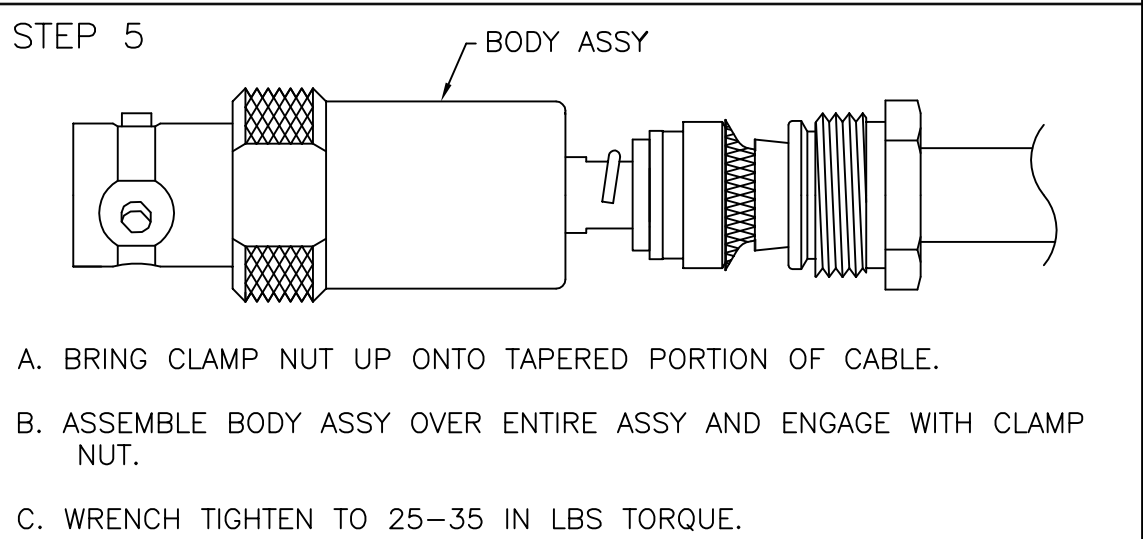
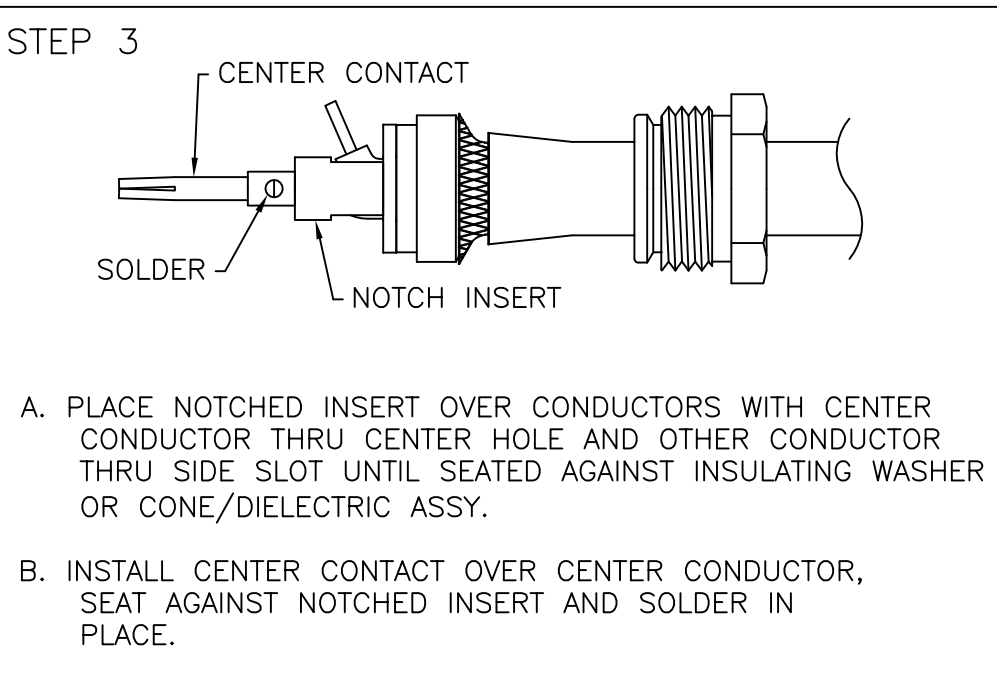
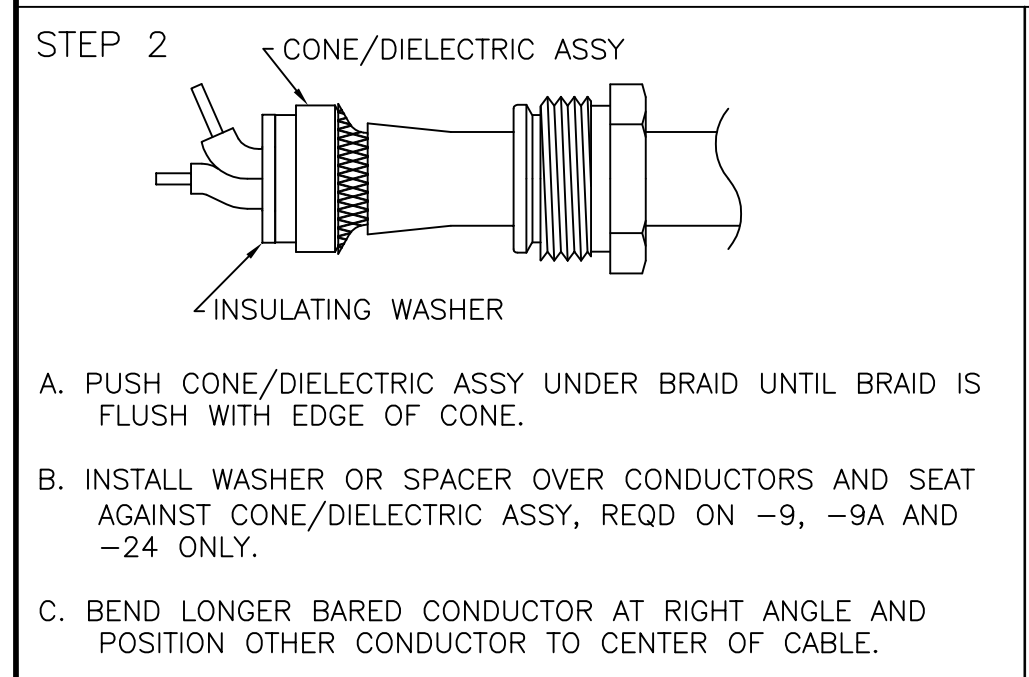
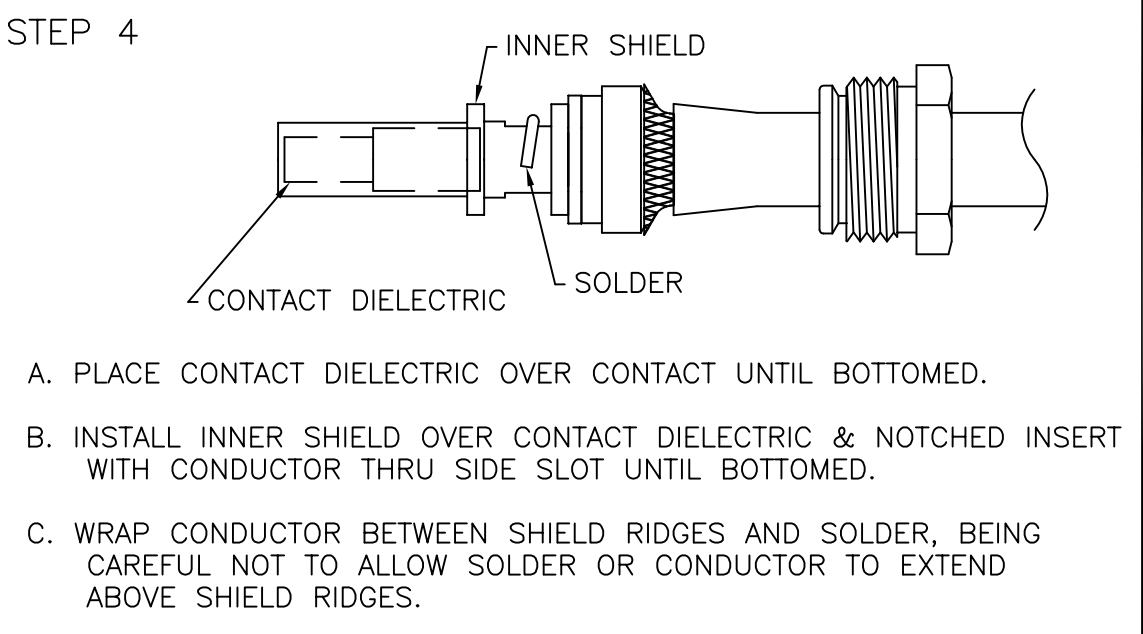
Cinch Connectivity Solutions  
299 Johnson Avenue SW, Suite 100  
Waseca, MN 56093 USA  
T: +1 507.833.8822 F: +1 507.833.6287  
[cinch.com](http://cinch.com)

MGF. CODE NO. 14949

REVISIONS			
REV	DESCRIPTION	DATE	APPROVED
H	ECO 53927	12/20/11	T. KOHLER



DASH NO	FIG
-9	F
-A9	F
-24	G
-25	F
-27	G
-29	F
-30	F
-35	F
-45	F
-47	G
-49	G
-55	G



UNLESS OTHERWISE SPECIFIED DIMENSIONS ARE IN INCHES TOLERANCES ARE:

FRACTIONS	DECIMALS	ANGLES
±	.XX ±	±
	.XXX ±	
	.XXXX ±	

**70 SERIES TWINAX CONNECTORS TO .250 DIA TWINAX CABLE**

SIGNATURES	DATE	SIZE	CAGE CODE	DWG NO.	REV
DRAWN BY C. WALLACE	12/20/11	B	14949	TAI-102	H
CHECKED BY T. KOHLER	12/21/11	SCALE	N/A	DATE	SHEET 1 OF 1
APPROVED BY T. KOHLER	12/21/11				