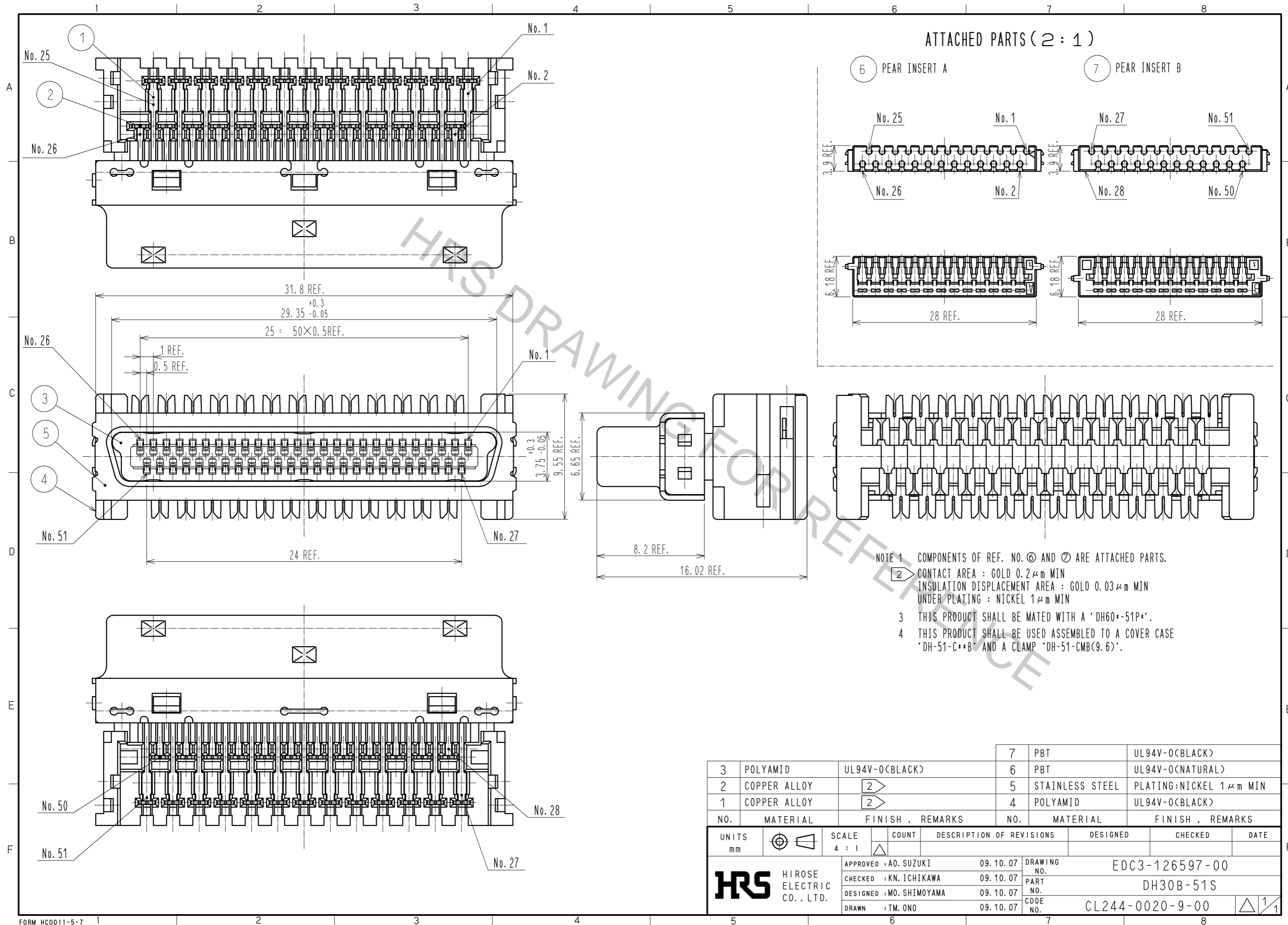


Oct.1.2018 Copyright 2018 HIROSE ELECTRIC CO., LTD. All Rights Reserved.
 In case that the application demands a high level of reliability, such as automotive,
 please contact a company representative for further information.



- NOTE 1 COMPONENTS OF REF. NO. ⑥ AND ⑦ ARE ATTACHED PARTS.
 ② CONTACT AREA : GOLD 0.2 μm MIN
 INSULATION DISPLACEMENT AREA : GOLD 0.03 μm MIN
 UNDER PLATING : NICKEL 1 μm MIN
 3 THIS PRODUCT SHALL BE MATED WITH A 'DH60*-51P*'.
 4 THIS PRODUCT SHALL BE USED ASSEMBLED TO A COVER CASE
 'DH-51-C**B' AND A CLAMP 'DH-51-CMB(9.6)'.

3	POLYAMID	UL94V-0(BLACK)	7	PBT	UL94V-0(BLACK)
2	COPPER ALLOY	②	6	PBT	UL94V-0(NATURAL)
1	COPPER ALLOY	②	5	STAINLESS STEEL	PLATING:NICKEL 1 μm MIN
NO.	MATERIAL	FINISH . REMARKS	NO.	MATERIAL	FINISH . REMARKS

UNITS	⊙	SCALE	COUNT	DESCRIPTION OF REVISIONS	DESIGNED	CHECKED	DATE
mm		4 : 1	△				
APPROVED : A0. SUZUKI				09. 10. 07	DRAWING NO. EDC3-126597-00		
CHECKED : KN. ICHIKAWA				09. 10. 07	PART NO. DH30B-51S		
DESIGNED : MO. SHIMOYAMA				09. 10. 07	CODE NO. CL244-0020-9-00		
DRAWN : TM. ONO				09. 10. 07	1/1		