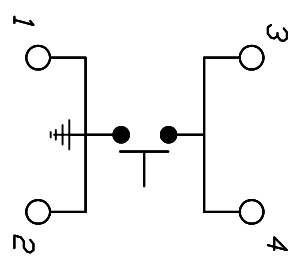
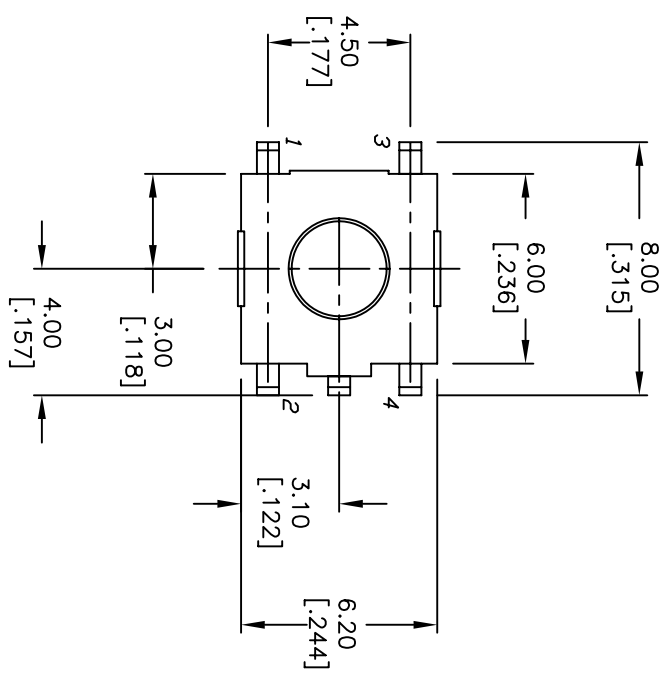
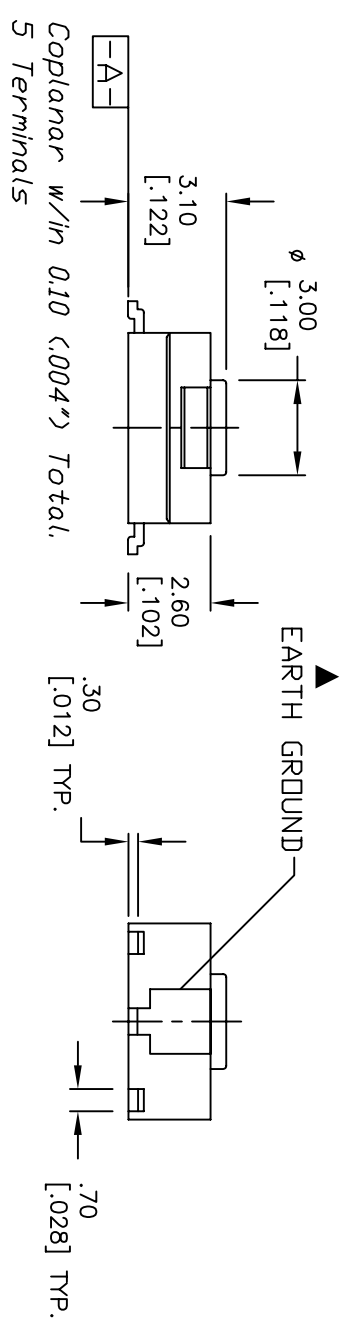


RECOMMENDED P.C.B. LAND



CIRCUIT: SPST

- NOTES:
1. ALL DIMENSIONS IN MM [INCH]
~UNLESS OTHERWISE SPECIFIED
 2. GENERAL TOLERANCE: X.X=±0.4
X.XX=±0.25
 3. TERMINAL NOS FOR REF. ONLY
 4. TRAVEL: 0.25 ±.1mm
 5. RATING: 50mA, 12VDC (GOLD CONTACTS)
 6. OPERATING FORCE: 160±50gf
 7. CONTACT RESISTANCE: 100M OHM MAX.
 8. PACKAGED: TAPE & REEL, 1500
 9. DESIGNATE MAJOR DIMENSIONS
 10. 2002/95/EC (ROHS) COMPLIANT



C	16646	UPDATED NOTES	11/13/06	TN
B	11904	REVISED AND REDRAWN	7/9/02	CJB
REV.	ECN NO.	DESCRIPTION	DATE	CHKD

THE INFORMATION CONTAINED IN THIS DOCUMENT IS PROPRIETARY TO E-SWITCH AND IS NOT TO BE COPIED OR TRANSFERRED

SCALE	4:1	DATE	11/13/2006	DR	TN	DWG	P010525	REV	C
-------	-----	------	------------	----	----	-----	---------	-----	---



TLE3303F1600G