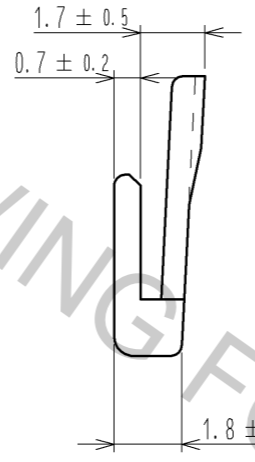
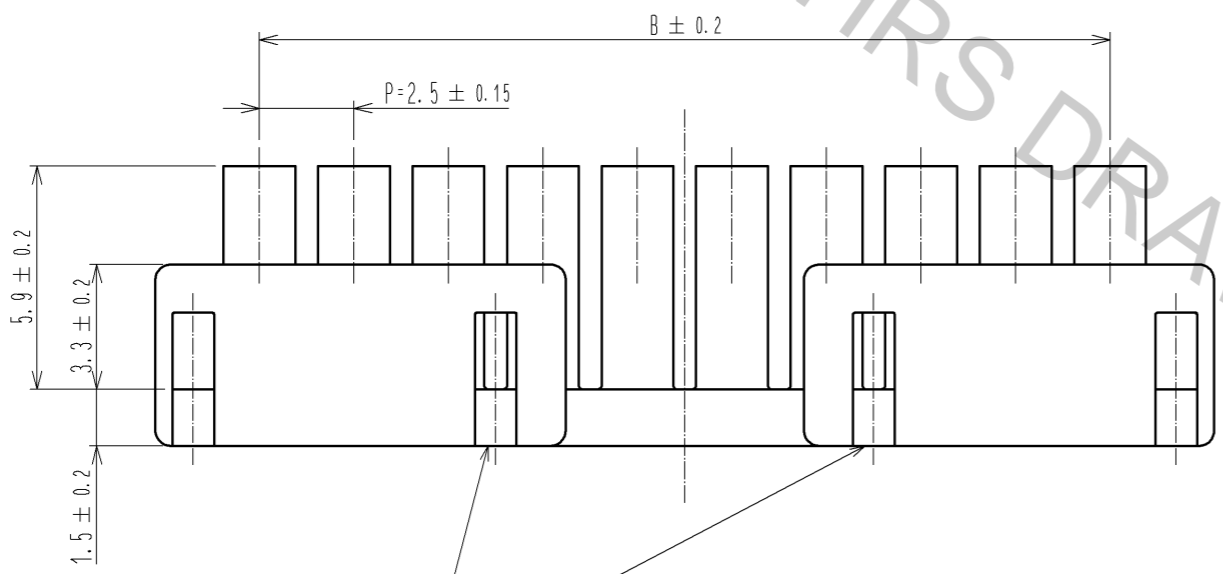
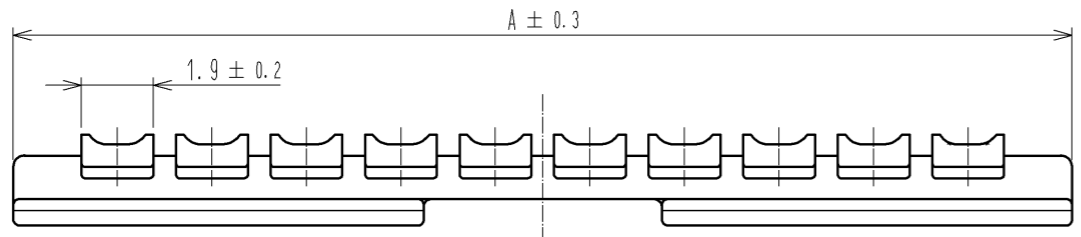


Apr.1.2017 Copyright 2017 HIROSE ELECTRIC CO., LTD. All Rights Reserved.

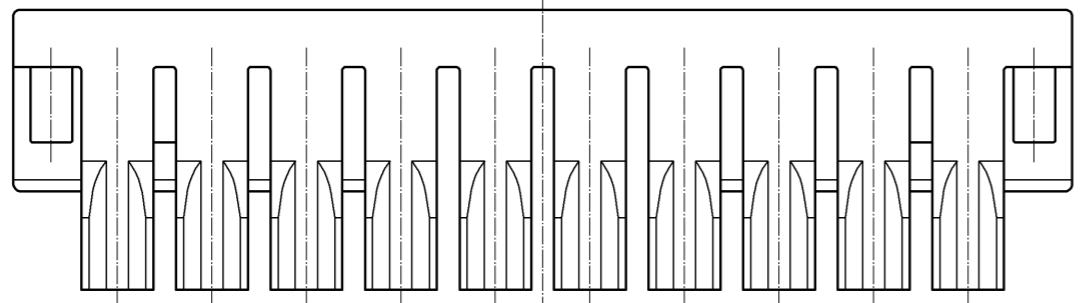


PART NO.	CL NO.	CONTACT NO.	A	B
DF1E- 2RS/P-2.5	541-0971-6	2	8	2.5
DF1E- 3RS/P-2.5	541-0972-9	3	10.5	5
DF1E- 4RS/P-2.5	541-0973-1	4	13	7.5
DF1E- 5RS/P-2.5	541-0974-4	5	15.5	10
DF1E- 6RS/P-2.5	541-0975-7	6	18	12.5
DF1E- 7RS/P-2.5	541-0976-0	7	20.5	15
DF1E- 8RS/P-2.5	541-0977-2	8	23	17.5
DF1E- 9RS/P-2.5	541-0978-5	9	25.5	20
DF1E-10RS/P-2.5	541-0979-8	10	28	22.5
DF1E-11RS/P-2.5	541-0980-7	11	30.5	25
DF1E-12RS/P-2.5	541-0981-0	12	33	27.5
DF1E-13RS/P-2.5	541-0982-2	13	35.5	30
DF1E-14RS/P-2.5	541-0983-5	14	38	32.5
DF1E-15RS/P-2.5	541-0984-8	15	40.5	35

NUMBER OF CONTACT

10

CAVITY No.



NOTE 1 THE CONFIGURATION SHOWN IN THE FIGURE IS APPLICABLE TO 6 POS. OR MORE.

NO.	MATERIAL	FINISH . REMARKS	NO.	MATERIAL	FINISH . REMARKS
			1	POLYAMIDE	BLACK . UL94V-0

UNITS	SCALE	COUNT	DESCRIPTION OF REVISIONS	DESIGNED	CHECKED	DATE
mm	5 : 1	△				
APPROVED : TS. SAKATA			08.05.15	DRAWING NO. EDC3-161948-01		
CHECKED : TS. KUMAZAWA			08.05.15	PART NO. DF1E-*RS/P-2.5		
DESIGNED : TH. YOSHIZAWA			08.05.14	CODE NO. CL541-		
DRAWN : TH. YOSHIZAWA			08.05.14	△ 1/1		